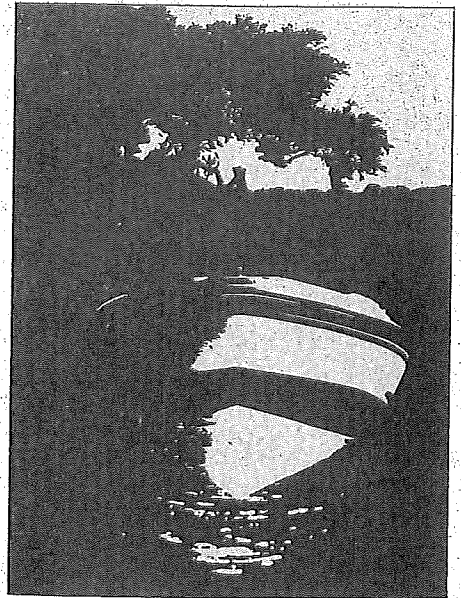


---

**Glastron<sup>®</sup>**



**SALESMAN'S  
HANDBOOK**

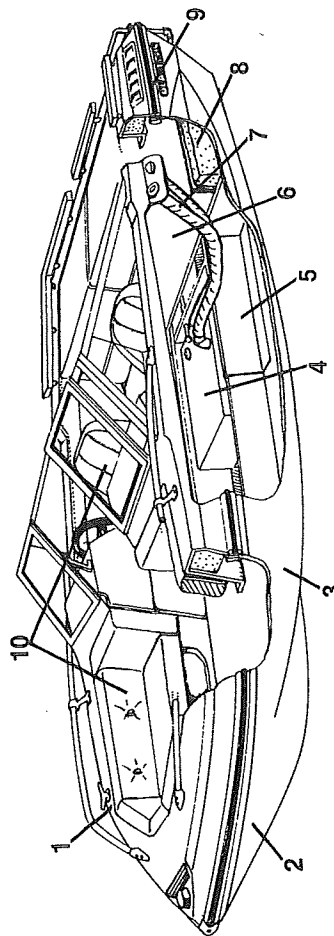
---

1987

Due to continuing improvements and changes in product features and options, Glastron-Conroy, Ltd. does not guarantee the availability of all product features and options as displayed in this book, and reserves the right to change specifications without notice.

THIS BOOK IS FOR GLASTRON SALESMAN'S REFERENCE ONLY AND IS NOT TO BE GIVEN OUT OR REPRODUCED.

### HIDDEN VALUES OF GLASTRON



1. Bonded Aluminum Reinforcing Plates Under Deck Hardware
2. Highest Quality Gelcoats
3. Hand Laminated Deck and Hull for Strength
4. Welded Aluminum Fuel Tanks, Pressure Tested for Safety
5. Fully Encapsulated Stringer System

6. Top Grade Solid Core Plywood Floors and Transom
7. Top Grade Fuel Hose Used Throughout
8. USCG Specification Foam Flotation in all Models
9. Aluminum Rub Rail with Stainless Steel Fasteners and Vinyl Bumper Insert
10. Top Quality Marine-Grade Vinyls Used Throughout

**BOAT  
LIMITED WARRANTY**

Company warrants each new boat manufactured by Company, to the original purchaser only, to be free from defects in material and workmanship under normal use or service for a period of one year from date of retail purchase from an authorized dealer.

Any part of the boat manufactured by Company and found in the judgment of Company to be defective in material or workmanship will be repaired or replaced by an authorized dealer during said warranty period. Warranty repairs or replacement do not extend the original one year warranty.

All warranty work must be approved in advance by an authorized dealer. The expense of transporting the boat to and from the dealer as well as any derigging or rerigging required in order to effect repairs will be paid for by the owner. Proof of purchase may be required.

**DISCLAIMER**

**THIS WARRANTY DOES NOT COVER  
THE FOLLOWING:**

UPHOLSTERY, CARPET, CANVAS, WINDSHIELD BREAKAGE, STRESS CRACKS, OR CRAZING OF GELCOAT.

BLISTERING: GELCOAT BLISTERING HAS NOT BEEN ATTRIBUTED TO ANY DEFECT IN THE MANUFACTURING PROCESS OR MATERIALS. NOR TO ANY USE OR ABUSE BY THE CONSUMER. GLASTRON-CONROY, LTD. DOES NOT CONSIDER BLISTERING TO BE A WARRANTABLE DEFECT IN ITS PRODUCTS. HOWEVER, SHOULD A BOAT-OWNER EXPERIENCE THIS PROBLEM, THE COMPANY DOES OFFER A HULL-REPLACEMENT PROGRAM AT MINIMAL COST TO THE CONSUMER. CONTACT THE CUSTOMER SERVICE DEPARTMENT FOR DETAILS.

ANY BOAT OPERATED FOR RACING OR COMMERCIAL PURPOSES, OR IN ANY WAY CONTRARY TO THE OPERATING OR MAINTENANCE INSTRUCTIONS AS SPECIFIED IN THE OWNER'S MANUAL.

THIS WARRANTY ALSO DOES NOT APPLY TO EQUIPMENT AND ACCESSORIES NOT MANUFACTURED BY COMPANY.

IN ADDITION, THIS WARRANTY DOES NOT EXTEND TO REPAIRS MADE NECESSARY BY NORMAL WEAR OR BY USE OF PARTS, ACCESSORIES OR MODIFICATIONS WHICH IN THE JUDGMENT OF COMPANY ARE EITHER INCOMPATIBLE WITH THE BOAT OR ADVERSELY AFFECT ITS OPERATION. NOR DOES THIS WARRANTY COVER ANY COMPANY BOAT WHICH HAS BEEN POWERED OR LOADED IN EXCESS OF LIMITS SPECIFIED ON THE CAPACITY PLATE ON EACH BOAT.

ALL WARRANTIES INCLUDING THE IMPLIED WARRANTIES OF MERCHANTABILITY, FITNESS FOR A PARTICULAR PURPOSE, OR OTHERWISE, ARE DISCLAIMED IN THEIR ENTIRETY. COMPANY'S OBLIGATIONS HEREUNDER ARE LIMITED TO THE REPAIR OR REPLACEMENT OF DEFECTIVE PARTS, AS AFORESAID, AND COMPANY DOES NOT ASSUME OR AUTHORIZE ANYONE TO ASSUME FOR THEM ANY OTHER OBLIGATION, CONSEQUENTIAL OR OTHERWISE.

This warranty applies only to boats sold in the United States and Canada.

**TRAILER  
LIMITED WARRANTY**

Company warrants each new trailer manufactured by Company, to the original purchaser only, to be free from defects in material and workmanship under normal use or service for one year from date of retail purchase from an authorized dealer.

Any part of the trailer manufactured by Company and found in the judgment of Company to be defective in material or workmanship will be repaired or replaced, by an authorized dealer. Warranty repairs or replacement do not extend the original one year warranty.

All warranty work must be approved in advance by an authorized dealer. The expense of transporting the trailer to and from the dealer will be paid for by the owner. Proof of purchase may be required.

**DISCLAIMER**

THIS WARRANTY DOES NOT COVER ANY TRAILER THAT HAS BEEN SUBJECT TO MISUSE, NEGLIGENCE, ACCIDENT OR OPERATED IN ANY WAY CONTRARY TO THE OPERATING OR MAINTENANCE INSTRUCTIONS AS SPECIFIED IN THE OWNER'S-OPERATOR'S MANUAL. THE WARRANTY DOES NOT COVER ANY TRAILER THAT HAS BEEN ALTERED OR MODIFIED SO AS TO ADVERSELY AFFECT THE TRAILER'S OPERATION, PERFORMANCE, OR DURABILITY, OR THAT HAS BEEN ALTERED OR MODIFIED SO AS TO CHANGE THE INTENDED USE OF THE TRAILER. IN ADDITION, THE WARRANTY DOES NOT EXTEND TO REPAIRS MADE NECESSARY BY NORMAL WEAR, OR BY THE USE OF PARTS OR ACCESSORIES WHICH IN THE JUDGMENT OF COMPANY ARE EITHER INCOMPATIBLE WITH THE TRAILER OR ADVERSELY AFFECT ITS OPERATION, PERFORMANCE OR DURABILITY.

THIS WARRANTY DOES NOT COVER (1) ANY BOATS TRANSPORTED OR STORED ON TRAILER; (2) OTHER EQUIPMENT OR ACCESSORIES CARRYING THEIR OWN INDIVIDUAL WARRANTIES; (3) MACHINERY, EQUIPMENT AND ACCESSORIES NOT FACTORY INSTALLED; (4) TRAILERS USED FOR COMMERCIAL PURPOSES; (5) ROAD GRAVEL DAMAGE TO PAINT; (6) FADING OF CARPET OR PAINT DUE TO NORMAL WEAR OR WEATHERING; (7) ANY TRAILER WHICH HAS BEEN OVERLOADED IN EXCESS OF THE CAPACITY STATED ON THE IDENTIFICATION PLATE AND IN THE OWNER'S-OPERATOR'S MANUAL; (8) OXIDATION OR CORROSION FROM USE IN SALTY OR BRINY WATERS, OR FROM EXTENDED USE IN OTHER WATERS; (9) LOSS OF TIRE/WHEEL ASSEMBLIES DUE TO INADEQUATE TORQUE MAINTENANCE OF WHEEL LUGS.

ALL WARRANTIES INCLUDING THE IMPLIED WARRANTIES OF MERCHANTABILITY, FITNESS FOR A PARTICULAR PURPOSE, OR OTHERWISE, ARE DISCLAIMED IN THEIR ENTIRETY. COMPANY'S OBLIGATIONS HEREUNDER ARE LIMITED TO THE REPAIR OR REPLACEMENT OF DEFECTIVE PARTS, AS AFORESAID, AND COMPANY DOES NOT ASSUME OR AUTHORIZE ANYONE TO ASSUME FOR THEM ANY OTHER OBLIGATION, CONSEQUENTIAL OR OTHERWISE.

This warranty applies only to trailers sold in the United States and Canada.

### SALES INFORMATION FOR GLASTRON, GLASTRON/CONROY AND GLASTRON/CARLSON BOAT LINES

Glastron-Conroy, Ltd. has not chosen the easiest or cheapest approach to boat construction, but it is the one which created satisfied customers year after year.

This handbook will provide you, the dealer, with information pertinent to each boat in the Glastron, Glastron/Conroy and Glastron/Carlson model lines. Its size is such that it can be carried with you on the showroom floor and referred to should specific questions come up pertaining to specifications, features or safety standards.

While each boat may be constructed in a different manner to suit its design, use and capability, there are many items which remain standard throughout all three lines.

#### HAND LAY-UP CONSTRUCTION

Hand lay-up construction is Glastron's method of manufacture in all of the boat lines. In the hand lay-up method, the basic raw materials, fiberglass mat, fiberglass roving and resin are used in the basic lay-up of hulls and decks. In strength and construction the hand lay-up method can be compared with plywood lamination. Plywood obtains its strength and resilience through its continuous layers, one bonded to the other. The same principle applies to the hand lay-up method of building a fiberglass boat. Also, Glastron's hand lay-up provides a high fiberglass-to-resin ratio to ensure lightness which means more speed with less horsepower and fuel.

Each boat receives a different hull lay-up, depending upon its size and horsepower requirements.

In each model, the keel areas of fiberglass are overlapped, thereby providing a double thickness in these areas of impact.

#### STRINGER SYSTEM

Each boat contains a rigid stringer system to support the hull and maintain its uniform shape. These stringers are encapsulated in fiberglass and bonded to the hull to assure a rigid single structure. The floor is then fastened in place to the stringer system. Other wood parts are protected against dry rot by a coating of wood-life preservative.

#### HULL

The SSV hull allows Glastron runabouts the smooth, fast ride of a deep vee hull, but with more stability. The position of the wide chines act as sponsons providing stability while the boat is at rest. Under power, the hull chines help support the deep vee section of the SSV hull for precise turning, as well as to provide lift that gets Glastron boats up on plane faster.

#### FUEL SYSTEMS

All fuel systems comply with current U.S. Coast Guard and Boating Industry Association specifications. All fuel tanks are pressure checked when the fuel lines are attached, to assure that there are no leaks around the fittings. In addition, each installed fuel tank includes anti-siphon protection to reduce the possibility of fuel spillage.

#### SEAT AND SEAT VINYL

Glastron-Conroy, Ltd. manufactures all of their own seats. Wood used in seats, as well as all exposed wood in the boat, is dipped in wood preservative in order to provide maximum protection against the possibility of delamination and rot. All plywood is bonded with waterproof exterior grade glue. Joints are glued and T-nuts are used extensively. Vinyls used in seats and other areas of the boats are the highest standard marine grade vinyls. Many models utilize a back-to-back sleeper seat which may be extended for the convenience of the owner.

#### CLEATS AND TRIM

Cleats and trim are all marine hardware. Backing plates are used beneath the deck to give added strength to cleats, boarding ladders and bow rail stanchions.

### RESINS AND GELCOATS

Unlike most other boat manufacturers who use general purpose orthothalic resins, Glastron uses a high quality blended isothalic laminating resin along with the highest quality isothalic gel coat. Laboratory test results have shown this resin to have higher strength, improved finish and more resistance to water blistering. This gelcoat is applied at an average thickness of 20 ml.-22 ml. (wet), 16 ml.-18 ml. (dry).

### APPROXIMATE SPEED

Approximate speed ranges are based on actual speed tests measured by radar. Boats are tested with various props and under varying weight/load conditions to determine the recommended prop for optimum performance. Keep in mind that optimum performance provides the best performance through all r.p.m. ranges and does not necessarily provide the highest peak speed performance.

### FOAM FLOTATION

All boats manufactured by Glastron, Glastron/Conroy and Glastron/Carlson comply with the U.S. Coast Guard regulations and NMMA standards for flotation. All O/B's under 20 feet have level flotation. All other models have basic flotation.

### NMMA CERTIFICATION

All boats manufactured by Glastron, Glastron/Conroy and Glastron/Carlson are certified by the National Marine Manufacturers Association as having met current established standards in the areas of fuel and electrical systems, compartment ventilation, steering, lighting, load capacities, flotation and horsepower limitations (O/B only). All lines are manufactured in compliance with U.S. Coast Guard Federal Regulations.

Many questions have arisen concerning NMMA certification of horsepower for outboards. The U.S. Coast Guard and many states now use this certification as a standard for horsepower limitation on all manufac-

turer's boats. This horsepower certification is derived in the following manner. NOTE: Different methods may be used for smaller boats having no remote steering or different hull forms.

- (1) Multiply the length of the boat in feet and tenths of feet times the maximum transom width in feet and tenths of feet.
- (2) Round off the previous answer down to the nearest whole number and multiply by two.
- (3) Subtract 90.
- (4) If the number is not a multiple of five, raise it to the next multiple of five.

This will provide you with the maximum NMMA certified and U.S.C.G. horsepower rating which can be established for a specific model of boat.

Glastron-Conroy, Ltd. does not recommend over-powering. To do so will result in voiding the warranty.

### ENGINE WEIGHT CHART

All sterndrives have been shown without engine weight. To arrive at the total boat weight with engine installed, refer to boat weight on individual model specifications page and add applicable engine weight as found in engine specification section.

Keep in mind when deriving trailer capacity that this weight does not take into consideration additional weight loads for fuel, gear, anchors, battery, etc., which the trailer will have to support.

### PROP RECOMMENDATIONS

Glastron-Conroy, Ltd. has recommended the prop which, in our opinion, provides the best all-around performance for the sterndrive engine-boat combination. Please keep in mind that altitude, load conditions, temperature, humidity, tuning, etc., can all affect a given boat's performance. Therefore, performance may vary dependent upon condition.

## DEFINITIONS OF BOAT MEASUREMENTS

**Length Overall (LOA)** — Distance along the centerline from the tip of the bow to the aft-most part of the hull.

**Maximum Beam** — Maximum width of the boat.

**Transom Width** — Maximum width of the boat at transom.

**Depth** — Vertical distance from lowest point of the keel to highest point of the boat, excluding windshields, lights and other removable components.

**Transom** — Vertical distance at boat's centerline from the keel/transom intersection to the transom top.

**Maximum Depth** — Vertical distance from lowest point of the keel to the highest point of boat, including windshields.

**Storage Capacity** — Total number of cubic feet of available storage space.

**Cockpit Depth** — Vertical distance from boat floor to top of gunwale as measured at the driver seat.

**Length Overall on Trailer** — Distance measured along the boat centerline, from forward-most point of trailer to aft-most point of motor/outdrive.

**Boat Height on Trailer** — Vertical Distance from ground to highest point of boat, including windshield.

**Draft (Drive unit up)** — Total number of inches of boat and/or motor and drive unit below the waterline. Measured unloaded, with the motor/drive-unit in the full up position.

**Draft (Drive unit down)** — Total number of inches of boat and/or motor and drive unit below the waterline. Measured unloaded, with the motor/drive-unit in the full down position.

## GLASTRON CUSTOM TRAILERS

ALL GLASTRON CUSTOM TRAILERS comply with FEDERAL DEPARTMENT OF TRANSPORTATION and the SOCIETY OF AUTOMOTIVE ENGINEERS, safety standards. These cover areas such as lighting, derating of automotive tires for trailer use, proper gross and axle weight values, brake systems, and Universal Vehicle Identification Code.

THE GLASTRON CUSTOM TRAILERS share many features for easy, trouble free trailering, launching and loading. These include:

- Low profile, wide track design for stable towing as well as easy launching and loading.
- Soft riding automotive tires.
- Slotted steel wheels painted to match the trailer.
- Color coordination with each Glastron boat.
- BEARING BUDDY axle with waterproof hubs and bearing system.
- Custom fitted bunks, engineered for maximum hull support. The bunk placement also insures easy and sure centering of the boat onto the trailer, making guide-on devices such as side boards or rollers unnecessary.
- Full enclosed fenders with carpet decks fore and aft.\*
- Triangulated bowstop with center mounted casterjack.
- Custom roll formed rails rather than structural steel or tubing. This gives the GLASTRON TRAILER the smooth, clean appearance that structural steel cannot, and without the water trapping properties of tubing.
- The rails are cold formed in a sweeping curve, not pieced and welded together.
- MIG welding is used with only cosmetic, superficial grinding when necessary. In all about 90% of all welds are hidden, or are not apparent when the boat is on the trailer.
- Fenders and deck are bolted on the frame, again to eliminate visible welds, as well as increase service ability.\*
- In addition to a baked-on polyester paint, the steel trailer receives a baked-on layer of a newly developed high solid, zinc rich primer, applied after a lengthy session in the cleaning and etching tanks.
- A hot dipped galvanized finish is available on all models for use in salty or coastal waters.

For specifications, see page 69.

\*NOT AVAILABLE ON TZ-16 TRAILER

## TRAILER SPECIFICATIONS

TRAILER MODEL	BOAT MODEL	LOA	WOA	RAIL	CAPACITY	WT.	TIRES	AXLE	BRAKES
TZ-16	Z-16	16'9"	79 1/2"	11 GA x 4 1/4	1320	380	A78-13 BW	Single	Optional
SG-16	Z-16, X-16, HPV-165	17'5"	91"	11 GA x 4 1/2	1720	520	C78-14 WW	Single	Optional
SC-16	CVX-16	17'5"	91"	11 GA x 4 1/2	1720	520	C78-14 WW	Single	Optional
SG-17	Z-17, X-17, SSV-178	18'6"	96"	7 GA x 4-5/8	2560	640	H78-14 WW	Single	Optional
SGT-17	Z-17, X-17, SSV-178	18'6"	96"	7 GA x 4-5/8	3500	820	F78-14 WW	Tandem	Optional
SX-17	SX-17	18'6"	96"	7 GA x 4-5/8	2560	640	H78-14 WW	Single	Optional
SXT-17	SX-17	18'6"	96"	7 GA x 4-5/8	3500	820	F78-14 WW	Single	Optional
SH-17	HPV-175	18'6"	96"	7 GA x 4-5/8	2560	640	H78-14 WW	Single	Optional
SHT-17	HPV-175	18'6"	96"	7 GA x 4-5/8	3500	820	F78-14 WW	Tandem	Optional
SC-18	CVX-18	18'6"	96"	7 GA x 4-5/8	2560	640	H78-14 WW	Single	Optional
SCT-18	CVX-18	18'6"	96"	7 GA x 4-5/8	3500	820	F78-14 WW	Tandem	Optional
TX-18S	X-18S	18'6"	96"	7 GA x 4-5/8	2100	540	F78-14 WW	Single	Optional

TRAILER MODEL	BOAT MODEL	LOA	WOA	RAIL	CAPACITY	WT.	TIRES	AXLE	BRAKES
SG-19	SSV-197/199 X-19D/CX-19	20'5"	96"	7 GA x 4-5/8	2560	660	H78-14 WW	Single	Optional
SGT-19	SSV-197/199 X-19D/CX-19	20'5"	96"	7 GA x 4-5/8	3000	830	F78-14 WW	Tandem	Optional
SX-19	SX-19	20'5"	96"	7 GA x 4-5/8	2560	650	H78-14 WW	Single	Optional
SXT-19	SX-19	20'5"	96"	7 GA x 4-5/8	3500	830	F78-14 WW	Tandem	Optional
S-19	SSV-197/199	20'5"	96"	7 GA x 4-5/8	3080	650	G78-14CWW	Single	Optional
ST-19	SSV-197/199	20'5"	96"	7 GA x 4-5/8	3500	830	F78-14 WW	Tandem	Optional
SS-19	SV-191	20'5"	96"	7 GA x 4-5/8	3080	650	G78-14CWW	Single	Optional
SST-19	SV-191	20'5"	96"	7 GA x 4-5/8	3500	830	F78-14 WW	Tandem	Optional
SC-20	Sprint	20'5"	96"	7 GA x 4-5/8	2560	650	H78-14 WW	Single	Optional
SCT-20	Sprint	20'5"	96"	7 GA x 4-5/8	3500	830	F78-14 WW	Tandem	Optional
SGT-21	V-216	22'6"	96"	7 GA x 4-5/8	4100	1300	F78-14 WW	Tandem	Standard
SCT-23	CV-23	23'	96"	7 GA x 4-5/8	4000	1150	F78-14 WW	Tandem	Standard
SGT-23	V-233	25'	96"	7 GA x 5/8	4700	1300	H78-14 WW	Tandem	Standard

\*With C78-14 Tire Option



# 1987 COLOR OPTIONS

## GLASTRON FAMILY MODELS AND GLASTRON/CONROY MODELS

### STANDARD

1. Blue Opaque / White Hull / White Interior
2. Blue Opaque / White Hull / Blue Interior
3. Blue Opaque / Blue Hull / Blue Interior
4. Blue Opaque / Gray Hull / Gray Interior
5. Red Opaque / White Hull / White Interior
6. Red Opaque / White Hull / Gray Interior
7. Red Opaque / Gray Hull / Gray Interior
8. Brown Opaque / White Hull / Brown Interior
9. Gray Opaque / White Hull / Gray Interior  
(X-19 Special Only)

*Note: X-19 SPECIAL available only in Gray Opaque / White Hull / Gray Interior*

### OPTIONAL

1. Blue Flake / White Hull / White Interior
2. Blue Flake / White Hull / Blue Interior
3. Blue Flake / Blue Hull / Blue Interior
4. Red Flake / White Hull / White Interior
5. Red Flake / Gray Hull / Gray Interior
6. Red Flake / White Hull / Gray Interior
7. Silver Flake / Gray Hull / Gray Interior
8. Brown Flake / White Hull / Brown Interior
9. Black Flake / White Hull / White Interior
10. Black Flake / White Hull / Gray Interior
11. Black Flake / Gray Hull / Gray Interior

## GLASTRON CRUISER MODELS (V-233)

1. Blue Opaque / White Hull / White Interior (Standard)
2. Red Opaque / White Hull / White Interior (Standard)
3. Blue Flake / White Hull / White Interior (Optional)
4. Red Flake / White Hull / White Interior (Optional)

## GLASTRON OFFSHORE MODELS (SSV-178 & V-216)

1. Blue Opaque / White Hull / White Interior

## GLASTRON BASS BOAT MODELS & GLASTRON/CARLSON MODELS

1. Blue Flake / White Hull / White Interior
2. Blue Flake / White Hull / Blue Interior
3. Blue Flake / Blue Hull / Blue Interior
4. Red Flake / White Hull / White Interior
5. Red Flake / Gray Hull / Gray Interior
6. Red Flake / White Hull / Gray Interior
7. Silver Flake / Gray Hull / Gray Interior
8. Brown Flake / White Hull / Brown Interior
9. Black Flake / White Hull / White Interior
10. Black Flake / White Hull / Gray Interior
11. Black Flake / Gray Hull / Gray Interior

# Z-16

## SPECIFICATIONS

LOA 16'2 1/4"  
 Beam 79 1/4"  
 Depth 38 3/4"  
 Maximum Depth 51"  
 LOA on Trailer 19'  
 Steering Mechanical  
 Max. Load 1290 lbs.  
 Max. Pers. 6 or 800 lbs.

Approximate Wt. Excl. Engine 750 lbs.  
 Ice Box Capacity 30 qt.  
 Transom Width 77 1/2"  
 Maximum Horsepower 90  
 Motor Shaft Length 20"  
 Cockpit Depth 25 1/2"  
 Boat Ht. on Trailer 72"  
 Fuel Capacity 18 gal.  
 NMMA Certified

Draft: A. Drive Unit Up 11 1/2"  
 B. Drive Unit Down 29 1/2"

### STANDARD FEATURES

Hand laid fiberglass construction  
 Built-in 18-gallon aluminum fuel tank  
 Instrument panel with: speedometer, tachometer, fuel gauge  
 Color coordinated upholstery  
 4 chrome tie-down cleats  
 Plush carpet  
 Insulated ice chest under forward bow cushion  
 Storage under bow seats and jump seats  
 Meets and exceeds Coast Guard flotation requirements  
 7 drink holders  
 Anodized aluminum bow rails  
 Anodized aluminum stern boarding ladder  
 Side tray storage

### PACKAGE PRICE

Boat \_\_\_\_\_  
 Motor \_\_\_\_\_ H.P.  
 Trailer \_\_\_\_\_  
 Accessories \_\_\_\_\_  
 Total List \_\_\_\_\_  
 Sale Price \_\_\_\_\_

In-floor ski locker with teak lid  
 Soft top  
 Walk-thru tempered glass windshield  
 Fold out sleeper seats  
 Aft jump seats  
 Concealed electric horn  
 Stainless steel bow eyes and ski eyes  
 Navigation lights with removable stern light  
 Open bow with cushioned seating  
 Padded dash tops  
 Accent striping  
 Padded sport wheel  
 Bilge pump  
 Lockable glove compartment

### OPTIONS

Tonneau bow cover  
 Side and stern curtains  
 Custom mooring cover  
 Soft top boot cover  
 Walk-thru curtain

### LIST

\_\_\_\_\_  
 \_\_\_\_\_  
 \_\_\_\_\_  
 \_\_\_\_\_  
 \_\_\_\_\_

# Z-17

## SPECIFICATIONS

LOA 17 1/2"  
 Beam 83"  
 Depth 46 3/4"  
 Maximum Depth 59"  
 LOA on Trailer 21'9"  
 Dual Cable Steering  
 Max. Load 1550 lbs.  
 Max. Pers. 7 or 1050 lbs.

Approximate Wt. Excl. Engine 955 lbs.  
 Ice Box Capacity 25 qt.  
 Transom Width 79"  
 Maximum Horsepower 140  
 Motor Shaft Length 20"  
 Cockpit Depth 29 1/2"  
 Boat Ht. on Trailer 73"  
 Fuel Capacity 24 gal.  
 NMMA Certified

Draft: A. Drive Unit Up 10 1/2"  
 B. Drive Unit Down 28"

### STANDARD FEATURES

Hand laid fiberglass construction  
 Built-in 24 gallon aluminum fuel tank  
 Instrument panel with: speedometer, tachometer, fuel gauge  
 Color coordinated upholstery  
 4 chrome tie-down cleats  
 Plush carpet  
 25-quart Igloo Ice Chest  
 Storage under bow seats and jump seats  
 All storage compartments  
 Meets and exceeds Coast Guard flotation requirements  
 12 drink holders  
 Anodized aluminum bow rails  
 Anodized aluminum stern boarding ladder  
 Lockable glove compartment

### PACKAGE PRICE

Boat \_\_\_\_\_  
 Motor \_\_\_\_\_ H.P.  
 Trailer \_\_\_\_\_  
 Accessories \_\_\_\_\_  
 Total List \_\_\_\_\_  
 Sale Price \_\_\_\_\_

In-floor ski locker with teak lid  
 Soft top  
 Walk-thru tempered glass windshield  
 Fold out sleeper seats  
 Aft jump seats  
 Concealed electric horn  
 Stainless steel bow eye and ski eyes  
 Navigation lights with removable stern light  
 Open bow with cushioned seating  
 Teakwood taffrails and step pads  
 Bilge pump  
 Padded dash

### OPTIONS

Side and stern curtains  
 Custom mooring cover  
 Soft top boot cover  
 Tonneau cover  
 Walk-thru curtain

### LIST

\_\_\_\_\_  
 \_\_\_\_\_  
 \_\_\_\_\_  
 \_\_\_\_\_  
 \_\_\_\_\_

# X-16

## SPECIFICATIONS

LOA 16'4"  
 Beam 79 1/4"  
 Depth 38 3/4"  
 Maximum Depth 51"  
 LOA on Trailer 19'  
 Rack and Pinion Steering  
 Max. Load 1290 lbs.  
 Max. Pers. 7 or 900 lbs.

Approximate Wt. Excl. Engine 800 lbs.  
 Ice Box Capacity 30 qt.  
 Transom Width 17"  
 Max. Horsepower 14.4  
 Motor Shaft Length 1/4"  
 Cockpit Depth 25 1/2"  
 Boat Ht. on Trailer 72"  
 Fuel Capacity 16 gal.  
 NMMA Certified

### PACKAGE PRICE

Boat  
 Motor \_\_\_\_\_ H.P.  
 Trailer  
 Accessories  
 Total List  
 Sale Price

### LIST

---



---



---



---



---



---

**STANDARD FEATURES**  
 Hand laid fiberglass construction  
 Color coordinated upholstery  
 4 chroma tie-down cleats  
 Built-in 18-gallon aluminum fuel tank  
 Flush carpet  
 Meets and exceeds Coast Guard flotation requirements  
 Insulated ice chest under forward bow cushion  
 Storage under bow seats, bench seats, and aft deck port and starboard compartments  
 In-floor ski locker with teak lid  
 Soft top  
 Anodized aluminum bow rails  
 Walk-thru tempered glass windshield  
 Bucket seats  
 Aft bench  
 Concealed electric horn  
 Stainless steel bow eye and ski eyes  
 Navigation lights with removable stern light

Anodized aluminum stern boarding ladder  
 Lockable glove compartment  
 7 drink holders  
 Open bow with cushioned seating  
 In-handle trim control  
 Bilge pump and blower  
 Instrument panel with:  
 speedometer, tachometer, electric fuel gauge, voltmeter, oil pressure gauge, engine temperature gauge plus switches for bilge pump, blower, horn and lights  
 Padded dash  
 Accent striping  
 Padded sport wheel  
 Teakwood taffrails & step pads

**OPTIONS**  
 MerCruiser or OMC controls  
 Tonneau cover  
 Side and stern curtains  
 Custom mooring cover  
 Soft top boot  
 Walk-thru curtain

**ENGINE OPTIONS**  
 120 MerCruiser  
 130 MerCruiser  
 130 OMC

# X-17

## SPECIFICATIONS

LOA 17'1"  
 Beam 83"  
 Depth 46 3/4"  
 Maximum Depth 60 1/2"  
 LOA on Trailer 20'2 3/4"  
 Rack and Pinion Steering  
 Max. Load 1050 lbs.  
 Max. Pers. 7 or 1050 lbs.

Approximate Wt. Excl. Engine 160 lbs.  
 Ice Box Capacity 24 qt.  
 Transom Width 78"  
 Max. Horsepower 40 hp  
 Motor Shaft Length 48"  
 Cockpit Depth 27"  
 Boat Ht. on Trailer 77"  
 Fuel Capacity 24 gal.  
 NMMA Certified

Draft: A. Drive Unit Up 14"  
 B. Drive Unit Down 31"

## PACKAGE PRICE

Boat \_\_\_\_\_  
 Motor \_\_\_\_\_ H.P.  
 Trailer \_\_\_\_\_  
 Accessories \_\_\_\_\_  
 Total List \_\_\_\_\_  
 Sale Price \_\_\_\_\_

## LIST

\_\_\_\_\_

\_\_\_\_\_

\_\_\_\_\_

\_\_\_\_\_

\_\_\_\_\_

## STANDARD FEATURES

Fold-out sleeper seats  
 Air jump seats  
 Built in 24-gallon aluminum fuel tank  
 Open bow with cushioned seating  
 In-handle trim control  
 Anodized aluminum bow rails  
 Anodized aluminum stern boarding ladder with non-skid swim step  
 Walk-thru tempered glass windshield  
 Meets and exceeds Coast Guard flotation requirements  
 Color coordinated upholstery  
 Navigation lights with removable stern light  
 Insulated ice chest  
 Instrument panel with speedometer, tachometer, electric fuel gauge, voltmeter, oil pressure gauge, engine temperature gauge plus switches for bilge pump, blower, horn and lights  
 Storage under bow seats, jump seats, and sun lounge  
 Bilge pump and blower

Hand laid fiberglass construction  
 4 chrome tie-down cleats  
 Stainless steel bow eye and ski eye  
 Soft top with concealed storage  
 Concealed electric horn  
 10 drink holders  
 Lockable glove compartment  
 Side tray storage  
 In-floor ski locker with teak lid  
 Plush carpet  
 Padded dash  
 Padded sport wheel  
 Accent stripping  
 Teak taffrails  
 Ski eye  
 Teak step pads

## OPTIONS

MerCruiser or OMC controls  
 Side and stern curtains  
 Tonneau cover  
 Custom mooring cover  
 Walk-thru curtain  
 Soft top boot

## ENGINE OPTIONS

120 MerCruiser  
 130 MerCruiser  
 165 MerCruiser  
 130 OMC

# SX-17

## SPECIFICATIONS

LOA 17'1 1/4"  
 Beam 87 3/4"  
 Depth 44"  
 Maximum Depth 55"  
 LOA on Trailer 21'1"  
 Rack and Pinion Steering  
 Max. Load 1100 lbs.  
 Max. Pers. Load 7 or 1050 lbs.

Approximate Wt. Excl. Engine 1200 lbs.  
 Ice Box Capacity 10 lbs.  
 Transom Width 48"  
 Max. Horsepower 65 HP  
 Motor Shaft Length 24"  
 Cockpit Depth 29"  
 Boat Ht. on Trailer 78"  
 Fuel Capacity 24 gal.  
 NMMA Certified

Draft: A. Drive Unit Up 15"  
 B. Drive Unit Down 30"

## PACKAGE PRICE

Boat  
 Motor \_\_\_\_\_ H.P.  
 Trailer  
 Accessories  
 Total List  
 Sale Price

## LIST


## STANDARD FEATURES

Fold-out sleeper seats  
 All jump seats  
 All sun lounge  
 Built-in 24-gallon aluminum fuel tank  
 Open bow with cushioned seating  
 Polyurethane trim control  
 Teak swim platform with anodized aluminum  
 Teak ladder  
 Walk-thru tempered glass windshield  
 Merits and exceeds Coast Guard flotation requirements  
 Color coordinated upholstery  
 Navigation lights with removable stern light  
 Insulated ice chest  
 Instrument panel with: speedometer, tachometer, electric fuel gauge, trim gauge, voltmeter, oil pressure gauge, engine temperature gauge plus switches for bilge pump, blower, horn and lights  
 Storage under bow seats, jump seats, and sun lounge  
 Hand laid fiberglass construction  
 Bilge pump and blower

AM/FM stereo cassette  
 2 coaxial speakers  
 Cockpit courtesy light  
 4 chrome tie-down cleats  
 Stainless steel bow eye  
 Soft top with concealed storage  
 Concealed electric horn  
 6 drink holders  
 Lockable glove compartment  
 Side tray storage  
 In-floor ski locker with teak lid  
 Plush carpet  
 Padded dash  
 Padded sport wheel  
 Accent stripping  
 Teak taffrails  
 Ski eye  
 Teak step pads

## OPTIONS

MerCruiser or OMC controls  
 Side and stern curtains  
 Tonneau cover  
 Custom mooring cover  
 Walk-thru curtain  
 Soft top boot  
 Full swim platform

## ENGINE OPTIONS

120 MerCruiser  
 130 MerCruiser  
 130 OMC

# X-19

## SPECIFICATIONS

LOA 18'8"  
 Beam 88 1/4"  
 Depth 42 1/8"  
 Maximum Depth 57 1/2"  
 LOA on Trailer 18'6"  
 Rack and Pinion Steering  
 Boat Ht. on Trailer 71"  
 Max. Load 1200 lbs.  
 Max. Pers. 8 or 1100 lbs.  
 Draft: A. Drive Unit Up 19"  
 B. Drive Unit Down 35 1/2"

Approximate Wt. Excl. Engine 1150 lbs.  
 Ice Box Capacity 35 qt.  
 Transom Width 48 1/2"  
 Max. Horsepower 100  
 Motor Shaft Length 48"  
 Cockpit Depth 24"  
 Fuel Capacity 27 gal.  
 NMMA Certified

## PACKAGE PRICE

Boat  
 Motor \_\_\_\_\_ H.P.  
 Trailer  
 Accessories  
 Total List  
 Sale Price

## LIST

\_\_\_\_\_

\_\_\_\_\_

\_\_\_\_\_

\_\_\_\_\_

\_\_\_\_\_

## STANDARD FEATURES

Fixed out sleeper seats  
 All jump seats  
 Hand laid fiberglass construction  
 Insulated ice chest under starboard jump seat  
 Color coordinated upholstery  
 Walk thru tempered glass windshield  
 Bilge pump and blower  
 Anodized aluminum bow rails and boarding ladder  
 Stainless steel bow eye  
 Navigation lights with removable stern light  
 Open bow with cushioned seating  
 Molded in swim platform with chrome grab handles  
 4 chrome tie-down cleats  
 Lockable glove compartment  
 Convenience grab strap  
 In-handle trim control  
 Meets and exceeds Coast Guard flotation requirements  
 Storage under bow seats, two lounge, jump seats, plus 2 side storage trays  
 Soft top with concealed storage  
 AM/FM stereo cassette

2 Coaxial speakers  
 Teakwood taffrails

Ski eye  
 Instrument panel with: speedometer, tachometer, electric fuel gauge, trim gauge, voltmeter, oil pressure gauge, engine temperature gauge plus switches for bilge pump, blower, horn and lights  
 6 drink holders  
 Concealed electric horn  
 In-floor ski locker w/teak lid  
 Teak step pads  
 Plush carpet  
 Built-in 27-gallon aluminum fuel tank  
 Padded dash  
 Padded sport wheel  
 Accent striping

## OPTIONS

MerCruiser or OMC controls  
 Custom mooring cover  
 Walk-thru curtain  
 Soft top boot  
 Side and stern curtains  
 Tonneau cover

## ENGINE OPTIONS

120 MerCruiser  
 130 MerCruiser  
 165 MerCruiser  
 130 OMC

# X-19 SPECIAL

## SPECIFICATIONS

LOA 18'8"  
 Beam 88 1/4"  
 Depth 42 1/8"  
 Maximum Depth 57 1/2"  
 LOA on Trailer 18'6"  
 Rack and Pinion Steering  
 Max. Load 1200 lbs.  
 Max. Pers. 8 or 1100 lbs.

Approximate Wt. Excl. Engine 1550 lbs.  
 Ice-Box Capacity 35 qt.  
 Transom Width 24"  
 Max. Horsepower 60 HP  
 Motor Shaft Length 24"  
 Cockpit Depth 20"  
 Boat Ht. on Trailer 17"  
 Fuel Capacity 27 gal.  
 NMEA Certified

Draft: A. Drive Unit Up 19"  
 B. Drive Unit Down 35 1/2"

### PACKAGE PRICE

Boat  
 Motor \_\_\_\_\_ H.P.  
 Trailer  
 Accessories  
 Total List  
 Sale Price

### LIST


NOTE: X-19 Special available only in Gray Opaque/White Hull/Gray Interior.

### STANDARD FEATURES

Four coil slinger seats  
 20 jump seats  
 20 tie-down cleats  
 Hand and fiberglass construction  
 Stanchion ice chest  
 Clear non-tempered glass windshield  
 High back and blower  
 Anodized aluminum bow rail and boarding ladder  
 Stainless steel bow eye  
 Stanchion lights with removable stern light  
 Open bow with cushioned seating  
 Moulded-in swim platform with chrome grab handles  
 4 chrome tie-down cleats  
 Lockable glove compartment  
 Convenience grab strap  
 Removable trim control  
 Stern and exceeds Coast Guard flotation requirements  
 Storage under bow seats, sun lounge, jump seats, plus 2 side storage trays  
 Additional stereo cassette  
 Soft top with concealed storage

2 coaxial speakers  
 Instrument panel with: speedometer, tachometer, electric fuel gauge, voltmeter, oil pressure gauge, engine temperature gauge plus switches for bilge pump, blower, horn and lights  
 3 drink holders  
 Concealed electric horn  
 In-floor ski locker with teak lid  
 Ski eye  
 Plush carpet  
 Built-in 27-gallon aluminum fuel tank  
 Padded dash  
 Padded sport wheel  
 Accent striping

### OPTIONS

MerCruiser controls  
 Custom mooring cover  
 Walk-thru curtain  
 Soft top boot  
 Side and stern curtains  
 Tonneau cover

ENGINE OPTION  
 120 MerCruiser  
 130 MerCruiser

# X-19 SPECIAL

## SPECIFICATIONS

LOA 18'8"	Approximate Wt. Excl. Engine 1150 lbs.
Beam 88¼"	Ice Box Capacity 35 qt.
Depth 42 1/8"	Transom Width 85½"
Maximum Depth 57½"	Max. Horsepower N/A
LOA on Trailer 18'6"	Motor Shaft Length N/A
Rack and Pinion Steering	Cockpit Depth 29¾"
Max. Load 1200 lbs.	Boat Ht. on Trailer 71"
Max. Pers. 8 or 1100 lbs.	Fuel Capacity 27 gal.
	NMMA Certified

Draft: A. Drive Unit Up 19"  
 B. Drive Unit Down 36½"

## PACKAGE PRICE

Boat \_\_\_\_\_  
 Motor \_\_\_\_\_ H.P.  
 Trailer \_\_\_\_\_  
 Accessories \_\_\_\_\_  
 Total List \_\_\_\_\_  
 Sale Price \_\_\_\_\_

## LIST

\_\_\_\_\_

\_\_\_\_\_

\_\_\_\_\_

\_\_\_\_\_

\_\_\_\_\_

NOTE: X-19 Special available only in Gray Opaque/  
 White Hull/Gray Interior.

## STANDARD FEATURES

Fold out sleeper seats  
 Aft jump seats  
 Aft sun lounge  
 Hand laid fiberglass construction  
 Insulated ice chest  
 Color coordinated upholstery  
 Walk-thru tempered glass windshield  
 Bilge pump and blower  
 Anodized aluminum bow rails and boarding ladder  
 Stainless steel bow eye  
 Navigation lights with removable stern light  
 Open bow with cushioned seating  
 Molded-in swim platform with chrome grab handles  
 4 chrome tie-down cleats  
 Lockable glove compartment  
 Convenience grab strap  
 In-handle trim control  
 Meets and exceeds Coast Guard flotation requirements  
 Storage under bow seats, sun lounge, jump seats, plus 2 side storage trays  
 AM/FM stereo cassette  
 Soft top with concealed storage

2 coaxial speakers  
 Instrument panel with: speedometer, tachometer, electric fuel gauge, voltmeter, oil pressure gauge, engine temperature gauge plus switches for bilge pump, blower, horn and lights  
 3 drink holders  
 Concealed electric horn  
 In-floor ski locker with teak lid  
 Ski eye  
 Plush carpet  
 Built-in 27-gallon aluminum fuel tank  
 Padded dash  
 Padded sport wheel  
 Accent striping

## OPTIONS

MerCruiser controls  
 Custom mooring cover  
 Walk-thru curtain  
 Soft top boot  
 Side and stern curtains  
 Tonneau cover

## ENGINE OPTION

120 MerCruiser  
 130 MerCruiser



# SX-19

## SPECIFICATIONS

LOA 19'1¼"  
 Beam 87¾"  
 Depth 44"  
 Maximum Depth 55"  
 LOA on Trailer 23'1"  
 Rack and Pinion Steering  
 Max. Load 1250 lbs.  
 Max. Pers. 8 or 1100 lbs.

Approximate Wt. Excl. Engine 1300 lbs.  
 Ice Box Capacity 18 qt.  
 Transom Width 85½"  
 Max. Horsepower N/A  
 Motor Shaft Length N/A  
 Cockpit Depth 29½"  
 Boat Ht. on Trailer 74½"  
 Fuel Capacity 24 gal.  
 NMMA Certified

Draft: A. Drive Unit Up 16"  
 B. Drive Unit Down 31"

### PACKAGE PRICE

Boat \_\_\_\_\_  
 Motor \_\_\_\_\_ H.P. \_\_\_\_\_  
 Trailer \_\_\_\_\_  
 Accessories \_\_\_\_\_  
 Total List \_\_\_\_\_  
 Sale Price \_\_\_\_\_

### LIST


### STANDARD FEATURES

Fold out sleeper seats  
 Aft jump seats  
 Aft sun lounge  
 Hand laid fiberglass construction  
 Insulated ice chest  
 Color coordinated upholstery  
 Walk-thru tempered glass windshield  
 Bilge pump and blower  
 Anodized aluminum bow rails  
 Teak swim platform with anodized aluminum boarding ladder  
 Stainless steel bow eye  
 Navigation lights with removable stern light  
 Open bow with cushioned seating  
 4 chrome tie-down cleats  
 Lockable glove compartment  
 Convenience grab strap  
 In-handle trim control  
 Meets and exceeds Coast Guard flotation requirements  
 Storage under bow seats, sun lounge, jump seats, plus 2 side storage trays  
 Soft top with concealed storage  
 Ski eye  
 AM/FM stereo cassette  
 2 coaxial speakers

Instrument panel with: speedometer, tachometer, electric fuel gauge, voltmeter, trim gauge, oil pressure gauge, engine temperature gauge plus switches for bilge pump, blower, horn and lights

6 drink holders  
 Concealed electric horn  
 In-floor ski locker with teak lid  
 Teak step pads  
 Plush carpet  
 Built-in 24-gallon aluminum fuel tank  
 Padded dash  
 Padded sport wheel  
 Accent striping  
 Cockpit courtesy light  
 Teak taffrails

### OPTIONS

MerCruiser or OMC controls  
 Custom mooring cover  
 Walk-thru curtain  
 Soft top boot  
 Side and stern curtains  
 Tonneau cover  
 Full swim platform

### ENGINE OPTIONS

120 MerCruiser  
 130 MerCruiser  
 165 MerCruiser  
 130 OMC



# SSV-187

## SPECIFICATIONS

LOA 18'11/4"  
Beam 88 3/4"  
Depth 44"  
Maximum Depth 58"  
LOA on Trailer 21'7"  
Dual Cable Steering  
Max. Load 1675 lbs.  
Max. Pers. 8 or 1100 lbs.

Approx. Wt. Excl. Engine 1350 lbs.  
Ice Box Cap. 20 qt.  
Transom Width 85 3/4"  
Motor Shaft Length 20"  
Max. Horsepower 150  
Cockpit Depth 27"  
Boat Ht. on Trailer 75"  
Fuel Capacity 33 gal.  
NMMA Certified

Draft: A. Drive Unit Up 14"  
B. Drive Unit Down 30"

## PACKAGE PRICE

Boat  
Motor \_\_\_\_\_ H.P.  
Trailer  
Accessories  
Total List  
Sale Price

## LIST

---

---

---

---

---

---

## STANDARD FEATURES

Stainless steel bow rails  
Teak taffrails  
Storage under bow seats, under jump seats, under splashwell and in side trays  
In-floor ski locker with hinged teak lid and lock  
Concealed electric horn  
Lockable glove compartment  
Passenger grab handle  
Built-in foot rests  
Built-in 33-gallon aluminum fuel tank  
Built-in ice chest under port jumpseat  
Teakwood swim platform with stainless steel boarding ladder  
Deluxe instrument panel with speedometer, tachometer, fuel gauge and switches for bilge pump/accessory, panel/interior lights, navigation/anchor lights and horn  
Carpeted storage areas  
Hand-laid fiberglass construction  
9 drinkholders: including stepped design which accommodates foam-insulated-type drinkholder  
Wrap-around bow seats with backrests

Navigation lights with removable stern light  
Walk-thru curtain  
Plush carpet  
Stainless steel bow eye and ski eyes  
Level flotation  
Bilge pump  
Sleeper seats with removable headrest  
Aft jump seats  
Cockpit courtesy lights  
Walk-thru tempered glass windshield  
Easy-up soft top system with boot cover, folds for storage under splashwell  
Chrome plated hardware  
Bow and stern teakwood step pads  
Teakwood interior accents  
Transom height of 21 1/2" for improved performance  
AM/FM stereo cassette  
2 coaxial speakers  
Circuit breakers at dash  
Fore and aft adjustment for driver's seat  
Padded dash  
Hinged bow cushions

## OPTIONS

Side and stern curtains  
Tonneau cover  
Custom mooring cover  
Extra boarding ladder with teak platform

# SSV-189

## SPECIFICATIONS

LOA 18'1 1/4"  
Beam 88 3/4"  
Depth 44"  
Maximum Depth 58"  
LOA on Trailer 21'7"  
Steering Rack and Pinion  
Max. Load 1200 lbs.  
Max. Pers. 8 or 1100 lbs.

Approx. Wt. Excl. Engine 1340 lbs.  
Ice Box Cap. 20 qt.  
Transom Width 85 1/2"  
Max. Horsepower N/A  
Motor Shaft Length N/A  
Cockpit Depth 27"  
Boat Ht. on Trailer 75"  
Fuel Capacity 33 gal.  
NMMA Certified

Draft: A. Drive Unit Up 16 1/2"  
B. Drive Unit Down 32"

## PACKAGE PRICE

Boat  
Motor \_\_\_\_\_ H.P.  
Trailer  
Accessories  
Total List  
Sale Price

## LIST


## STANDARD FEATURES

Stainless steel bow rails  
Teak taffrails  
Storage under bow seats,  
under jump seats, under  
motorcover and in  
side trays  
In-floor ski locker with hinged  
teakwood lid and lock  
Concealed electric horn  
Lockable glove compartment  
Passenger grab handle  
Built-in foot rests  
Built-in 33-gallon aluminum  
fuel tank  
Built-in ice chest  
Teakwood swim platform  
with stainless steel ladder  
Carpeted storage areas  
Walk-thru curtain  
Hand-laid fiberglass  
construction  
6 drinkholders: including  
stepped design which  
accommodates foam-  
insulated-type drinkholder  
Wrap-around bow seats with  
backrests and hinged  
cushions  
Navigation lights with  
removable stern light  
Push carpet  
Deluxe instrument panel  
with: speedometer, tachometer,  
fuel gauge, trim  
gauge, voltmeter, oil  
pressure gauge, water  
temperature gauge, and  
switches for bilge pump/  
blower, panel/interior  
lights, navigation/anchor  
lights and horn  
Stainless steel bow eye and  
ski eyes  
Level flotation  
Bilge pump and blower

Available seating arrangements: sleeper seats with  
removeable headrest and  
aft jump seats; or  
swivel bucket seats with  
built-in headrest, aft  
bench and sun lounge.  
Cockpit courtesy lights  
Walk-thru tempered glass  
windshield

Easy-up soft top system with  
boot cover and hidden  
storage  
Chrome plated hardware  
Bow and stern teakwood  
step pads  
Teakwood interior accents  
Padded dash  
AM/FM stereo cassette  
2 coaxial speakers  
Fore and aft adjustment  
for driver's seat  
Circuit breakers at dash  
Ski pylon  
Engine hatch with gas  
spring assist  
(bench/bucket only)

## OPTIONS

MerCruiser or OMC controls  
Stainless steel propeller  
(260 MerC or OMC)  
Full swim platform  
Side and stern curtains  
Tonneau bow cover  
Custom mooring cover

## ENGINE OPTIONS

175 MerCruiser  
180 MerCruiser  
200 MerCruiser  
205 MerCruiser  
230 MerCruiser  
260 MerCruiser  
175 OMC  
205 OMC  
230 OMC  
260 OMC

# SV-191

## SPECIFICATIONS

LOA 19'3"  
 Beam 95 3/4"  
 Depth 37 3/4"  
 Maximum Depth 53 3/4"  
 LOA on Trailer 21'6"  
 Rack and Pinion Steering  
 Max. Pers. 12 or 1600 lbs.  
 Max. Load 1600 lbs.  
 NMMA Certified

Approx. Wt. Excl. Engine 1750 lbs.  
 Ice Box Cap. 52 qts.  
 Transom Width 81 1/2"  
 Max. Horsepower N/A  
 Motor Shaft Length N/A  
 Cockpit Depth 26"  
 Fuel Cap. 33 gal.  
 Boat Ht. on Trailer 75"

Draft: A. Drive Unit Up 17"  
 B. Drive Unit Down 34 1/2"

## PACKAGE PRICE

Boat \_\_\_\_\_  
 Motor \_\_\_\_\_ H.P.  
 Trailer \_\_\_\_\_  
 Accessories \_\_\_\_\_  
 Total List \_\_\_\_\_  
 Sale Price \_\_\_\_\_

## LIST

\_\_\_\_\_

\_\_\_\_\_

\_\_\_\_\_

\_\_\_\_\_

\_\_\_\_\_

**STANDARD FEATURES**  
 AM/FM stereo cassette  
 4 coaxial speakers  
 Electric power antenna  
 Circuit breakers at dash  
 Swivel driver bucket seating with wraparound bench  
 Engine hatch with gas spring assist  
 In-floor ski storage with hinged teak lid and lock  
 Deluxe instrument panel with: speedometer, tachometer, electric fuel gauge, trim gauge, oil pressure gauge, engine temperature gauge, voltmeter, and switches for bilge pump/blower, horn, and lights  
 Bow eye and ski pylon  
 Storage under bowseats, lounge seats and sun lounge  
 Deluxe lockable glove compartment  
 Stainless steel boarding ladder  
 Molded-in swim platform  
 Venturi windshield  
 Stainless steel bow and stern rails  
 Deluxe sport steering wheel  
 Engine compartment lighting  
 Concealed electric horn  
 11 drinkholders: including stepped design which accommodates foam-insulated-type drinkholder  
 Built-in foot rest under console  
 Built-in 33-gallon aluminum fuel tank  
 Carpeted storage areas  
 Upholstered lockable port side console with storage area underneath

Hand-laid fiberglass construction  
 Aft sun lounge  
 Cushioned bow area  
 Entertainment console  
 Built-in insulated ice chest  
 Bilge pump and blower  
 Positive foam flotation  
 Easy bow access  
 Teak step pads  
 Navigation lights with removable stern light  
 Adjustable driver's seat  
 Padded dash  
 Chart lighter  
 Cockpit courtesy lights

## OPTIONS

Soft top and boot cover  
 Console windshield  
 Side and stern curtains  
 Camper canvas  
 Portable head  
 Cocktail table  
 Forward sun lounge cushions  
 MerCruiser or OMC control  
 Stainless steel propeller (260 MerC or OMC)  
 Custom mooring cover

## ENGINE OPTIONS

175 MerCruiser  
 180 MerCruiser  
 200 MerCruiser  
 205 MerCruiser  
 230 MerCruiser  
 260 MerCruiser  
 175 OMC  
 205 OMC  
 230 OMC  
 260 OMC

# SSV-197

## SPECIFICATIONS

LOA 19'5"  
 Beam 96"  
 Depth 45"  
 Maximum Depth 61"  
 LOA on Trailer 22'6"  
 Dual Cable Steering  
 Approx. Wt. Excl. Engine 1700 lbs.  
 Max. Load 2300 lbs.  
 Max. Persons 9 or 1600 lbs.

Max. Horsepower 200  
 Motor Shaft Length 20"  
 Cockpit Depth 30"  
 Fuel Capacity 33 gal.  
 Boat Ht. on Trailer 76"  
 Transom width 93 1/2"  
 NMMA Certified

### PACKAGE PRICE

Boat \_\_\_\_\_  
 Motor \_\_\_\_\_ H.P.  
 Trailer \_\_\_\_\_  
 Accessories \_\_\_\_\_  
 Total List \_\_\_\_\_  
 Sale Price \_\_\_\_\_

### LIST


**STANDARD FEATURES**  
 Stainless steel bow rails  
 Teak railrails  
 Storage under hinged bow seats, under jump seats, under splashwell and in side trays  
 In-floor ski locker with teakwood hinged lid and lock  
 Concealed electric horn  
 Lockable glove compartment  
 Padded dash  
 Passenger grab handle  
 Built-in foot rests  
 Built-in 33 gallon aluminum fuel tank  
 Built-in ice chest under port jump seat  
 Twin teakwood swim platforms with stainless steel boarding ladders  
 Deluxe instrument panel with speedometer, tachometer, fuel gauge and switches for bilge pumps/ accessory, panel/interior lights, navigation/anchor lights and horn  
 Carpeted storage areas  
 Hand-laid fiberglass construction  
 11 drinkholders: including stepped design which accommodates foam-insulated-type drinkholder  
 Wrap-around bow seats with back rests

In-floor storage locker with hinge and lock  
 Navigation lighting with removable stern light  
 Circuit breakers at dash  
 Walk-thru curtain  
 Plush carpet  
 Stainless steel bow eye and ski eyes  
 Level flotation  
 Bilge pump  
 Sleeper seats with removable headrest  
 Aft jump seats  
 Cockpit courtesy lights  
 Chart lighter  
 Walk-thru tempered glass windshield  
 Easy-up soft top system with boot cover and hidden storage  
 Chrome plated hardware  
 Bow and stern teakwood step pads  
 Teakwood interior accents  
 Transom height of 21 1/4" for improved performance  
 AM/FM stereo cassette  
 2 coaxial speakers  
 Fore and aft adjustment for driver's seat

**OPTIONS**  
 Side and stern curtains  
 Tonneau bow cover  
 Custom mooring cover

# SSV-199

## SPECIFICATIONS

LOA 19'4½"  
 Beam 96"  
 Depth 45"  
 Maximum Depth 61"  
 Max. Load 1750 lbs.  
 Max. Persons 9 or 1600 lbs.  
 LOA on Trailer 22'6¼"  
 Steering Rack and Pinion

Approx. Wt. Excl. Engine 1660 lbs.  
 Motor Shaft Length N/A  
 Cockpit Depth 30"  
 Boat Ht. on Trailer 16"  
 Fuel Capacity 33 gal  
 Max. Horsepower N/A  
 NMMA Certified  
 Transom Width 93"

## PACKAGE PRICE

Boat \_\_\_\_\_  
 Motor \_\_\_\_\_ H.P.  
 Trailer \_\_\_\_\_  
 Accessories \_\_\_\_\_  
 Total List \_\_\_\_\_  
 Sale Price \_\_\_\_\_

## LIST

---



---



---



---



---



---

## STANDARD FEATURES

Engine hatch with gas spring assist (Bench/ Bucket Only)  
 Stainless steel bow rails  
 Teak railrails  
 Storage under bow seats, under jump seats, under sunlounge and in side trays  
 In-floor ski locker with hinged teak lid and lock  
 Engine compartment lighting  
 Concealed electric horn  
 Lockable glove compartment  
 Passenger grab handle  
 Built-in foot rests  
 Built-in 33-gallon aluminum fuel tank  
 Twin teakwood swim platforms with stainless steel boarding ladders  
 Deluxe instrument panel with: speedometer, tachometer, fuel gauge, trim gauge, oil pressure gauge, engine temp. gauge, voltmeter and switches for bilge pump/accessory, panel/interior lights, navigation/anchor lights and horn  
 Carpeted storage areas  
 Walk-thru curtain  
 Hand-laid fiberglass construction  
 10 drinkholders: including stepped design which accommodates foam-insulated-type drinkholder  
 Wrap-around bow seats with backrests and hinged bow cushions  
 Available seating arrangements: sleeper seats with removable headrest and aft jump seats; or swivel bucket seats with built-in headrest, aft bench and sunlounge.

Navigation lights with removable stern light  
 Plush carpet  
 Adjustable driver's seat  
 Stainless steel bow eye and ski eyes  
 Level flotation  
 Bilge pump and blower  
 Cockpit courtesy lights  
 Walk-thru tempered glass windshield  
 Easy-up soft top system with boot cover and concealed storage  
 Chrome plated hardware  
 Bow and stern teakwood step pads  
 Teakwood interior accents  
 AM/FM stereo cassette  
 4 coaxial speakers  
 Power antenna  
 Circuit breakers at dash  
 Built-in ice chest  
 Ski pylon  
 Chart lighter  
 Thru-transom exhaust (350 Magnum Only)

## OPTIONS

Stainless propeller (260 MerCruiser or OMC)  
 MerCruiser or OMC controls  
 Side and stern curtains  
 Tonneau cover  
 Custom mooring cover  
 Full swim platform

## ENGINE OPTIONS

175 MerCruiser  
 180 MerCruiser  
 200 MerCruiser  
 205 MerCruiser  
 230 MerCruiser  
 260 MerCruiser  
 350 MerC Magnum w/ss prop and MerC Control  
 175 OMC  
 205 OMC  
 230 OMC  
 260 OMC

# SSV-199 ULTRA

## SPECIFICATIONS

LOA 19'4½"  
 Beam 96"  
 Depth 45"  
 Maximum Depth 61"  
 Max. Load 1750 lbs.  
 Max. Persons 9 or 1600 lbs.  
 LOA on Trailer 22'6¼"  
 Steering Rack and Pinion

Approx. Wt. Excl. Engine 1660 lbs.  
 Motor Shaft Length N/A  
 Cockpit Depth 30"  
 Boat Ht. on Trailer 76"  
 Fuel Capacity 33 gal.  
 Max. Horsepower N/A  
 NMMA Certified  
 Transom Width 93"

### PACKAGE PRICE

Boat \_\_\_\_\_  
 Motor \_\_\_\_\_ H.P.  
 Trailer \_\_\_\_\_  
 Accessories \_\_\_\_\_  
 Total List \_\_\_\_\_  
 Sale Price \_\_\_\_\_

### LIST

---



---



---



---



---



---

**STANDARD FEATURES**  
 Electric engine hatch lift  
 Stainless steel bow rails  
 Molded teak frairrails  
 Storage under bow seats, under jump seats, under sunlounge and in side trays  
 In-floor ski locker with hinged teak lid and lock  
 Engine compartment lighting  
 Concealed electric horn  
 Lockable glove compartment  
 Passenger grab handle  
 Built-in foot rests  
 Built-in 33-gallon aluminum fuel tank  
 Full teakwood swim platform with stainless steel boarding ladder  
 Deluxe instrument panel with: speedometer, tachometer, fuel gauge, trim gauge, oil pressure gauge, engine temp. gauge, voltmeter, in-dash depth finder and switches for bilge pump/accessory, panel/interior lights, navigation/anchor lights and horn  
 Carpeted storage areas  
 Walk-thru curtain  
 Hand-laid fiberglass construction  
 10 drinkholders: including stepped design which accommodates foam-insulated-type drinkholder  
 Wrap-around bow seats with backrests and hinged bow cushions  
 Navigation lights with removable stern light

Plush carpet  
 Adjustable driver and passenger seats  
 Swivel bucket seats with built-in headrest, aft bench and sunlounge  
 Stainless steel bow eye  
 Level flotation  
 Bilge pump and blower  
 Cockpit courtesy lights  
 Walk-thru tempered glass windshield  
 Easy-up soft top system with boot cover and concealed storage  
 Chrome plated hardware  
 Bow and stern teakwood step pads  
 Teakwood interior accents  
 AM/FM stereo cassette  
 4 coaxial speakers  
 Power antenna  
 Circuit breakers at dash  
 Built-in ice chest  
 Ski pylon  
 Chart lighter  
 Tilt steering wheel  
 Padded dash  
 MerCruiser or OMC controls

**OPTIONS**  
 Side and stern curtains  
 Tonneau cover  
 Custom mooring cover  
 Through-transom exhaust (350 Magnum only)  
 Stainless steel propeller (260 MerC or OMC)

**ENGINE OPTIONS**  
 260 MerCruiser  
 350 MerC Magnum w/ss prop  
 260 OMC



# V-233

## SPECIFICATIONS

LOA 23'3 3/4"  
 Beam 96"  
 Depth 62 1/2"  
 Maximum Depth 81"  
 LOA on Trailer 27'9"  
 Steering Rack and Pinion  
 Boat Ht. on Trailer 97 3/4"  
 NMMA Certified

Approx. Wt. Excl. Engine 2650 lbs.  
 Ice Box Cap. 50 qt.  
 Transom Width 94 1/4"  
 Max. Horsepower N/A  
 Motor Shaft Length N/A  
 Cockpit Depth 33 1/2"  
 Fuel Capacity 87 gal.  
 Max. Load 1500 lbs.  
 Max. Persons 8 or 1500 lbs.

Draft: A. Drive Unit Up 23 1/2"  
 B. Drive Unit Down 40 1/2"

## PACKAGE PRICE

Boat \_\_\_\_\_  
 Motor \_\_\_\_\_ H.P.  
 Trailer \_\_\_\_\_  
 Accessories \_\_\_\_\_  
 Total List \_\_\_\_\_  
 Sale Price \_\_\_\_\_

## LIST

---



---



---



---



---



---

## ENGINE OPTIONS

175 MerCruiser	175 OMC
180 MerCruiser	205 OMC
200 MerCruiser	230 OMC
205 MerCruiser	260 OMC
230 MerCruiser	
260 MerCruiser	
350 MerC Magnum w/ss prop	
454 MerC Magnum w/ss prop	

## STANDARD FEATURES

AM/FM stereo cassette  
 4 coaxial speakers —  
 2 in cockpit and 2 in cabin  
 Power antenna  
 Stainless steel sport wheel  
 Carpeted storage areas  
 Hand laid fiberglass  
 construction with integrat-  
 ed fiberglass stringers  
 Custom molded dash with  
 command instrumenta-  
 tion, speedometer, tachom-  
 eter, electric fuel gauge,  
 oil pressure gauge, engine  
 temperature gauge, trim  
 gauge, voltmeter and  
 switches for bilge pump,  
 blower, horn, lights, and  
 accessories, rollmeter  
 and circuit breakers  
 Storage under cockpit floor  
 with teakwood lid, under  
 each of the three cabin  
 cushions, cabin side trays,  
 under sleeper seat and  
 forward of bow cabin  
 bulkhead  
 Teak step pads  
 Built in 87-gallon aluminum  
 fuel tank  
 Automatic bilge pump  
 In-handle trim control  
 Bilge blower  
 Power steering  
 Foam flotation  
 Stainless steel bow rails  
 Ski storage under aft lid  
 MerCruiser or OMC control  
 Welded frame windshield  
 with side vents  
 14 drinkholders, including  
 stepped design which  
 accommodates foam-  
 insulated-type drinkholder  
 Oversized smoked plexiglass  
 hatch for easy bow access  
 Deep plush marine carpet  
 Teak tailrains  
 Cabin side windows  
 Soft top with boot cover  
 Cockpit courtesy lights  
 Navigation lighting  
 Concealed soft top storage  
 under aft lid

Cabin lights, chart lights  
 Built-in corner cabinet with  
 bottle and ice storage  
 Full teakwood swim platform  
 with stainless steel  
 boarding ladder  
 Bow eye and ski ring  
 Dual trumpet horn  
 Lockable teakwood cabin doors  
 Portable head with hold-  
 down assembly  
 Seated headroom for five  
 in cabin  
 Cocktail table with mounting  
 locations in cabin or cockpit  
 Sleeping accommodations  
 for four  
 Fore and aft seat adjustment  
 on driver's seat  
 Available seating arrangements:  
 2 sleeper seats;  
 1 sleeper seat and  
 1 helmsman seat;  
 1 sleeper seat and  
 1 helmsman seat with galley.  
 All configurations come with  
 bench seat aft. Galley  
 assembly includes ice box,  
 water tank, alcohol stove,  
 stainless steel sink, and  
 electric water pump.  
 Rear bench seat/sun lounge  
 with removable cushions  
 on outboard sides for  
 access aft  
 2 Removable Igloo ice chests  
 stow under bench seat  
 (1 ice chest w/galley option)  
 Cigarette lighter and ash trays  
 Cabin mirror on forward  
 bulkhead

## OPTIONS

Hydraulic leveller with trim  
 indicators  
 Side and stern curtains  
 Camper canvas  
 Bow anchor locker  
 Stainless steel propeller  
 (260 MerC or OMC)  
 Through-transom exhaust  
 (350, 454 Magnum only)  
 Custom mooring cover  
 Cockpit enclosure canvas  
 Tilt steering wheel

# CVX-16

## SPECIFICATIONS

LOA 16'8"  
 Beam 78½"  
 Depth 32"  
 Maximum Depth 40"  
 LOA on Trailer 19'1¼"  
 Dual Cable Steering  
 Max. Load: 1200 lbs.  
 Max. Pers. 5 or 750 lbs.  
 NMMA Certified

Approx. Wt. Excl. Engine 750 lbs.  
 Ice Box Cap. 34 qt.  
 Transom Width 77"  
 Max. Horsepower 125  
 Motor Shaft Length 20"  
 Cockpit Depth 26½"  
 Boat Ht. on Trailer 55"  
 Fuel Cap. 18 gal.

Draft: A. Drive Unit Up 10½"  
 B. Drive Unit Down 28"

### STANDARD FEATURES

Built-in ice chest  
 Bow storage compartment  
 Aft storage compartments  
 Instrument panel with:  
 tachometer, speedometer,  
 fuel gauge  
 Stainless steel boarding  
 ladder  
 Stainless steel stern rails  
 Carpeted storage areas  
 Hand-laid fiberglass  
 construction  
 Bucket and bench seating,  
 passenger seat swivels  
 Padded aft bench seat with  
 ice chest and storage  
 beneath  
 7 drinkholders: including  
 stepped design  
 which accommodates  
 foam-insulated-type  
 drinkholder

Storage under splashwell  
 Side tray storage  
 Storage tray built into dash  
 Level flotation  
 Custom sport wheel  
 Built-in 18 gal. alum. fuel tank  
 Stainless steel bow eye and  
 ski eyes  
 Navigation lights with  
 removable stern light  
 Level foam flotation  
 Plush carpet  
 Concealed electric horn  
 Contoured tinted plexiglass  
 windshield  
 Bow ski locker  
 Lockable glove compartment  
 Teak step pads

### OPTIONS

Custom mooring cover

### PACKAGE PRICE

Boat \_\_\_\_\_  
 Motor \_\_\_\_\_ H.P. \_\_\_\_\_  
 Trailer \_\_\_\_\_  
 Accessories \_\_\_\_\_  
 Total List \_\_\_\_\_  
 Sale Price \_\_\_\_\_

### LIST

\_\_\_\_\_  
 \_\_\_\_\_  
 \_\_\_\_\_  
 \_\_\_\_\_  
 \_\_\_\_\_

# CVX-18

## SPECIFICATIONS

LOA 18'1½"  
 Beam 90"  
 Depth 37"  
 Maximum Depth 43¼"  
 LOA on Trailer 21'¾"  
 Rack and Pinion Steering  
 Boat Ht. on Trailer 58½"  
 Max. Load 900 lbs.  
 Max. Persons Load 6 or 900 lbs.

Approx. Wt. Excl. Engine 950 lbs.  
 Ice Box Cap. 34 qt.  
 Transom Width 86"  
 Max. Horsepower N/A  
 Motor Shaft Length N/A

Draft: A. Drive Unit Up 12½"  
 B. Drive Unit Down 30"

### STANDARD FEATURES

Built-in ice chest  
 Custom sport wheel  
 Bow eye and ski eye  
 Stainless steel boarding  
 ladder  
 Stainless steel stern  
 rails  
 2 bow storage areas  
 2 padded stern lids with  
 storage underneath  
 Deluxe grab bar  
 Instrument panel with:  
 speedometer, tachometer,  
 fuel gauge, oil pressure  
 gauge, engine temperature  
 gauge, voltmeter, trim  
 gauge and switches for  
 bilge pump, blower,  
 horn and lights  
 Carpeted storage areas  
 Built-in 27 gallon aluminum  
 fuel tank  
 8 drinkholders: including  
 stepped design which  
 accommodates foam-  
 insulated-type drinkholder

Cockpit Depth 25½"  
 Fuel Capacity 27 gal.  
 NMMA Certified

Hand-laid fiberglass  
 construction  
 Side tray storage  
 Swivel bucket seats  
 Lockable glove compartment  
 Bench seat with ice chest  
 and storage beneath  
 Concealed electric horn  
 Navigation lights with  
 removable stern light  
 Contoured tinted  
 plexiglass windscreen  
 Positive foam flotation  
 Plush carpet  
 Aft storage compartment  
 Adjustable driver's seat

### OPTIONS

Custom mooring cover  
 MerCruiser or OMC control  
 Stainless steel propeller  
 (260 MerC or OMC)

### ENGINE OPTIONS

230 MerCruiser  
 260 MerCruiser  
 230 OMC  
 260 OMC

### PACKAGE PRICE

Boat \_\_\_\_\_  
 Motor \_\_\_\_\_ H.P. \_\_\_\_\_  
 Trailer \_\_\_\_\_  
 Accessories \_\_\_\_\_  
 Total List \_\_\_\_\_  
 Sale Price \_\_\_\_\_

### LIST

\_\_\_\_\_  
 \_\_\_\_\_  
 \_\_\_\_\_  
 \_\_\_\_\_  
 \_\_\_\_\_

# CVX-20 SPRINT

## SPECIFICATIONS

LOA 20'3"  
 Beam 90 1/4"  
 Depth 37"  
 Maximum Depth 48"  
 LOA on Trailer 21'9 1/2"  
 Dual Cable Steering  
 Max. Load 1515 lbs.  
 Max. Pers. 6 or 1025 lbs.

Approx. Wt. Excl. Engine 1050 lbs.  
 Ice Box Cap. 18 qt.  
 Transom Width 84 1/4"  
 Max. Horsepower 200  
 Motor Shaft Length 20"  
 Cockpit Depth 26"  
 Fuel Cap. 27 gal.  
 Boat Ht. on Trailer 63"  
 NMMA Certified

Draft: A. Drive Unit Up 12 1/2"  
 B. Drive Unit Down 30"

## PACKAGE PRICE

Boat  
 Motor \_\_\_\_\_ H.P.  
 Trailer  
 Accessories  
 Total List  
 Sale Price

## LIST

---



---



---



---



---

## STANDARD FEATURES

2 bow storage areas  
 Stainless steel stern rails  
 Instrument panel with:  
 speedometer, tachometer,  
 fuel gauge and switches  
 for bilge pump, horn,  
 and lights  
 Deluxe grab bar  
 Custom sport wheel  
 Positive foam flotation  
 Stainless steel boarding  
 ladder  
 Molded-in swim platform  
 Carpet storage areas  
 Concealed electric horn  
 Contoured tinted plexiglass  
 windshield  
 Navigation lights  
 Bow cleats  
 Full width wrap-around  
 rear seat  
 Lockable glove compartment

Built-in ski storage  
 8 drinkholders: including  
 stepped design which  
 accommodates foam-  
 insulated-type drinkholder  
 Swivel bucket seats  
 Aft bench seat  
 Adjustable driver's seat  
 Deluxe center console with  
 lockable storage  
 Courtesy light  
 Plush pile carpet  
 Bilge pump  
 Deluxe side trays  
 Built-in 27-gallon aluminum  
 fuel tank  
 Ski eyes  
 Built-in ice chest  
 Teak step pads

## OPTIONS

Custom mooring cover

# CV-23

## SPECIFICATIONS

LOA 23'4¾"  
 Beam 91½"  
 Depth 50"  
 Maximum Depth 58¾"  
 LOA on Trailer 26'2½"  
 Rack and Pinion Steering  
 Max. Load 1200 lbs.  
 Max. Pers. 8 or 1200 lbs.

Approx. Wt. Excl. Engine 1400 lbs.  
 Ice Box Cap. 46 qt.  
 Transom Width 65"  
 Max. Horsepower N/A  
 Motor Shaft Length N/A  
 Cockpit Depth 32¼"  
 Boat Ht. on Trailer 74¼"  
 Fuel Cap. 50 gal.  
 NMMA Certified

Draft: A. Drive Unit Up 12¼"  
 B. Drive Unit Down 29¾"

## PACKAGE PRICE

Boat  
 Motor \_\_\_\_\_ H.P.  
 Trailer  
 Accessories  
 Total List  
 Sale Price

## LIST

---



---



---



---



---



---

### STANDARD FEATURES

AM/FM stereo cassette  
 4 coaxial speakers  
 Circuit breakers  
 Electric power antenna  
 Stainless steel boarding ladder  
 Molded-in swim platform with teak step pads  
 Lockable teakwood cabin doors  
 Cabin privacy curtain  
 Cabin seating converts to full sleep area  
 MerCruiser or OMC controls  
 Carpeted storage areas  
 Engine compartment lighting  
 Hand-laid fiberglass construction  
 Padded aft sun lounge with deep storage beneath  
 Padded side storage trays  
 Venturi windshield  
 Stainless steel bow and stern rails  
 Engine hatch with gas spring assist  
 6 drinkholders, including stepped design which accommodates foam-insulated-type drinkholder  
 Instrument panel with: speedometer, tachometer, electric fuel gauge, oil pressure gauge, engine temperature gauge, voltmeter  
 Plush carpet  
 Concealed electric horn  
 Cabin lights  
 Power steering

Foam flotation  
 Built-in 50-gallon aluminum fuel tank  
 Spacious daycruiser cabin  
 Plexiglass bow hatch with inside latches  
 Navigation lights with removable stern light  
 Swivel bucket seats with built-in headrest  
 Removable ice chest stores under stern sun lounge  
 Padded aft bench with ski storage beneath  
 Teak step pads  
 Automatic bilge pump  
 Bilge blower  
 Cockpit courtesy light  
 Bow eye and ski pylon  
 Stainless steel prop  
 Tilt steering wheel  
 Adjustable driver and passenger seats  
 Cabin mirror on forward bulkhead  
 Ski tow bar  
 Plug-in teakwood table with drinkholders

**OPTIONS**  
 Stainless steel propeller (260 MerC or OMC)  
 Enclosure canvas  
 Custom mooring cover  
 Depth finder  
 Bimini top  
 Side and stern curtains

**ENGINE OPTIONS**  
 260 MerCruiser  
 350 MerC Magnum w/ss prop  
 260 OMC

# HPV-165

## SPECIFICATIONS

LOA 16'2 1/4"  
 Beam 79 1/4"  
 Depth 33"  
 Maximum Depth 48"  
 LOA on Trailer 19'  
 Dual Cable Steering  
 Max. Load 1150 lbs.  
 Max. Pers. 5 or 610 lbs.  
 NMMA Certified

Approx. Wt. Excl. Engine 950 lbs.  
 Ice Box Cap. 48 qt.  
 Transom Width 77 1/4"  
 Max. Horsepower 120  
 Motor Shaft Length 23"  
 Cockpit Depth 19"  
 Boat Ht. on Trailer 63"  
 Fuel Capacity 18 gal.

Draft: A. Drive Unit Up 11"  
 B. Drive Unit Down 28 3/4"

### PACKAGE PRICE

Boat  
 Motor \_\_\_\_\_ H.P.  
 Trailer  
 Accessories  
 Total List  
 Sale Price

### LIST

---



---



---



---



---



---

**STANDARD FEATURES**  
 Lockable rod locker  
 Lockable in-floor ski locker with hinged teak lid & lock  
 Carpeted storage areas  
 Forward and aft livewells  
 Carpeted bow locker lids with removable cushions  
 Stainless steel bow rails  
 Lockable glove compartment  
 Built-in 18 gal. alum. fuel tank  
 Fold-down driver and passenger seats  
 Remote livewell drain system for both livewells  
 Bass boat seats  
 Automatic livewell aerator system  
 Matching switch plate and bow panel plate  
 Heavy-duty livewell hose  
 Concealed electric horn  
 Hand-laid fiberglass construction  
 Bench seat between helmsman and passenger seats, carpeted storage below  
 Aft ice chest  
 Marine hardware, bow and ski eyes  
 Stern battery/storage compartment  
 Seat extension storage & drinkholders: including stepped design which accommodates foam-insulated-type drinkholder  
 Navigation lights with removable stern light and bow light

Tachometer  
 Speedometer  
 2 folding removable spring mounted seats, swiveling 360°  
 Elevated casting platforms fore and aft, storage below  
 Reinforced foredeck for mounting trolling motor  
 Helmsman custom console: softgrip competition steering wheel, mechanical steering, electric fuel gauge, switches for livewell, pump, accessories, inland lighting  
 Custom bow panel: pre-wired trolling motor outlet with 12/24 volt switch, molded plug with two connections, engine tilt switch, volt gauge with battery test switch, charge switch, cockpit courtesy light and chart lighter  
 Bilge pump  
 Level foam flotation  
 6 gauge trolling motor leads

**OPTIONS**  
 Tinted plexiglass sleek or upright windscreens  
 Boarding ladder  
 Custom mooring cover  
 Pole seat casting chair  
 Power pedestal

# HPV-175

## SPECIFICATIONS

LOA 17'9½"  
 Beam 91¼"  
 Depth 35¾"  
 Maximum Depth 51½"  
 LOA on Trailer 20'7¼"  
 Dual Cable Steering  
 Max. Load 1400 lbs.  
 Max. Pers. 7 or 900 lbs.  
 NMMA Certified

Approx. Wt. Excl. Engine 1115 lbs.  
 Ice Box Cap. 45 qt.  
 Transom Width 60"  
 Max. Horsepower 185  
 Motor Shaft Length 20"  
 Cockpit Depth 20½"  
 Boat Ht. on Trailer 65½"  
 Fuel Capacity 25 gal.

Draft: A. Drive Unit Up 11"  
 B. Drive Unit Down 28½"

## PACKAGE PRICE

Boat \_\_\_\_\_  
 Motor \_\_\_\_\_ H.P.  
 Trailer \_\_\_\_\_  
 Accessories \_\_\_\_\_  
 Total List \_\_\_\_\_  
 Sale Price \_\_\_\_\_

## LIST


**STANDARD FEATURES**  
 In-floor ski locker with hinged teak lid & lock  
 2 lockable rod/ski lockers with carpeted lids and removable cushions  
 Stainless steel bow rails  
 Remote livewell drain systems  
 Fold-down driver and passenger seats  
 Carpeted storage lockers  
 Automatic livewell aerating system  
 Matching switch plate and bow panel plate  
 Heavy-duty livewell hose  
 Bass boat seats  
 Concealed electric horn  
 Built-in 25 gallon aluminum fuel tank  
 Hand-laid fiberglass construction  
 2 folding removable spring mounted seats, swivel 360° (2 position front seat mount)  
 Bench seat between helmsman and passenger seats, carpeted storage below  
 Elevated casting platform fore and aft, storage below  
 Forward circulating livewell  
 Aft — one circulating livewell and one ice chest  
 Seat extension storage  
 4 drinkholders including stepped design which accommodates foam-insulated-type drinkholder  
 Reinforced foredeck for mounting trolling motor  
 Bilge pump  
 Cockpit courtesy light

Helmsman custom console: soft grip competition steering wheel, electric fuel gauge, tachometer, speedometer, switches for livewell pump, bilge pump, inland lighting, horn  
 Custom bow panel: pre-wired trolling motor outlet with 12/24 volt switch, molded plug with two connections, engine tilt switch, volt gauge with battery test switch, charge switch, chart lighter and courtesy light  
 Marine hardware, bow and ski eyes  
 Stern battery/storage compartment  
 Navigation lights with removable stern light  
 Twin custom consoles with storage tray in passenger side  
 Level foam flotation  
 Transom height of 22½" prevents need for jack-plate assembly  
 6 gauge trolling motor leads  
 Lockable glove compartment

## OPTIONS

Tinted plexiglass sleek or upright windcreens  
 Stern boarding ladder  
 Custom mooring cover  
 Pole seat casting chair  
 Upright aluminum framed windshield and soft top kit with walk-thru curtain  
 Power pedestal

# SSV-178

## SPECIFICATIONS

LOA 17'1¼"  
 Beam 83"  
 Depth 46¾"  
 Maximum Depth 59"  
 LOA on Trailer 21'9"  
 Dual Cable Steering  
 Max. Load 1550 lbs.  
 Max. Pers. 7 or 1050 lbs.  
 NMMA Certified

Approx. Wt. Excl. Engine 955 lbs.  
 Ice Box Cap. 32 qt.  
 Transom Width 79"  
 Max. Horsepower 140  
 Motor Shaft Length 20"  
 Cockpit Depth 30"  
 Boat Ht. on Trailer 73"  
 Fuel Cap. 25 gal.

Draft: A. Drive Unit Up 10½"  
 B. Drive Unit Down 28"

## PACKAGE PRICE

Boat  
 Motor \_\_\_\_\_ H.P.  
 Trailer  
 Accessories  
 Total List  
 Sale Price

## LIST

---



---



---



---



---

## STANDARD FEATURES

3 removable helmman fishing seats, fixed driver helmman seat  
 Bow fishing platform with seat location  
 1 cockpit fishing seat locations  
 Stainless steel bow rails  
 Sport steering wheel  
 Teak bow locker door  
 Carpet storage areas  
 Concealed electric horn  
 Walk thru curtain  
 Built-in 12 quart ice chest under bow seat  
 Built-in fishrice box in the stern floor area  
 Built-in 25 gal. alum fuel tank  
 Bilge pump (1,250 gallons per hour)  
 Soft top with bow area for mounting of trolling motor  
 Chrome plated hardware  
 Reinforced deck area for mounting of rod holders and down riggers

Electric fuel gauge  
 Hand-laid fiberglass construction  
 Walk-thru tempered glass windshield  
 Navigation lighting with a removable stern light  
 Stainless steel bow eye and ski eyes  
 Side storage trays with rod holders  
 Rack and pinion steering  
 Lockable glove compartment  
 Level flotation  
 Speedometer  
 Tachometer  
 Rod storage  
 Teak step pads  
 6 drinkholders

## OPTIONS

Stern boarding ladder  
 Side and stern curtains  
 Custom mooring cover  
 Tonneau cover

# V-216

## SPECIFICATIONS

LOA 20'7"  
 Beam 96"  
 Depth 64 1/4"  
 Maximum Depth 80 3/4"  
 Motor Shaft Length  
 Twin 20" Single 25"  
 LOA on Trailer 23'9 3/4"  
 Max. Load 2280 lbs.  
 Max. Pers. 10 or 1500 lbs.

Approx. Wt. Excl. Engine 2030 lbs.  
 Ice Box Cap. 99 qt  
 Transom Width 91 1/2"  
 Max. Horsepower 220  
 Cockpit Depth 24"  
 Boat Ht. on Trailer 97 1/2"  
 Steering Mechanical  
 Fuel capacity 75 gal.  
 NMMA Certified

Draft: A. Drive Unit Up 19"  
 B. Drive Unit Down 46"

### PACKAGE PRICE

Boat  
 Motor \_\_\_\_\_ H.P.  
 Trailer  
 Accessories  
 Total List  
 Sale Price

### LIST

---



---



---



---



---

### STANDARD FEATURES

Carpeted storage areas  
 Electric trumpet horn  
 Padded seat forward of center cabin with storage beneath for soft top  
 Stainless steel bow rails  
 Corrosion-resistant hardware  
 Enclosed lighted cabin with cushioned vee berths and in-bulk-head cabinets, space for optional head, sliding cabin windows, lockable cabin door with lockable hatch cover and ample storage  
 Self-bailing cockpit with fiberglass liner  
 Built-in 75 gallon aluminum fuel tank with electric gauge  
 Large in-floor fish-wells/ baitwells with fiberglass lids  
 2 rod holders  
 Teak rod racks under gunwales  
 Removable splashwell transom board  
 Removable battery access panel in splashwell

Non-skid deck and floor  
 Non-skid 14" walkway around center cabin  
 Hand-laid fiberglass construction  
 Tempered glass tinted windshield  
 High-volume dual bilge pump with automatic float switch  
 Recessed rod holders  
 Custom instrument panel  
 Foam flotation  
 Soft top with boot cover  
 Cabin lights  
 Navigation lighting  
 2 helmsman chairs  
 Stainless steel steering wheel with adjustable driver's seat  
 Cockpit courtesy lights  
 Stainless steel bow and ski eyes  
 4 ice chests/fish lockers  
 Teak step pads

### OPTIONS

Speedometer  
 Helm enclosure canvas  
 Portable head  
 Custom mooring cover



## ENGINE & PERFORMANCE INFORMATION

The following pages contain data about sterndrives offered in our 1987 product. The approximate weight information of each boat is weighed dry, or without engine or fuel, so adding the weight of the engine and 7 pounds per gallon will give you a very accurate total weight figure.

The following performance data has been compiled by Glastron's Engineering/Boat Test group, and is to be used as a guide in discussing specific models' overall performance. The data will vary depending on water conditions, altitude, wind, etc., and these variances should be noted prior to quoting performance data to the consumer. Glastron will provide additional engine data as it becomes available so that you can speak to speed, fuel consumption and other questions the customer might have regarding Glastron's performance.

MODEL:	MERCURISER 120
Horsepower	120
Cylinders	4
Cubic Inches	153
Compression Ratio	8.5:1
Max. Recommended RPM	4200-4600
Circuit Breaker	40 amp Thermal
Lower Unit Gear Ratio	1.98:1
Tilt	Power
Trim	Power
Length	33 1/4"
Width	21-3/8"
Height	19 1/2" (above crankshaft L) 27-5/8" (overall)
Weight	595 lbs.

MODEL:	MERCURISER 130
Horsepower	130
Cylinders	4
Cubic Inches	181
Compression Ratio	8.5:1
Max. Recommended RPM	4200-4600
Circuit Breaker	40 amp Thermal
Lower Unit Gear Ratio	1.98:1
Tilt	Power
Trim	Power
Length	33 1/4"
Width	21-3/8"
Height	19 1/2" (above crankshaft L) 27-5/8" (overall) 620 lbs. (pkg. weight)
Weight	

MODEL:	MERCURISER 165
Horsepower	165
Cylinders	4
Cubic Inches	224
Compression Ratio	8.8:1
Max. Recommended RPM	4200-4600
Circuit Breaker	40 amp Thermal
Lower Unit Gear Ratio	1.84:1
Tilt	Power
Trim	Power
Length	36-5/16"
Height	19 3/4" (above crankshaft L) 28 1/4" (overall) 23-5/8"
Width	722 lbs. (pkg. weight)
Weight	

MODEL:	MERCURISER 175
Horsepower	175
Cylinders	6
Cubic Inches	262
Compression Ratio	9.3:1
Max. Recommended RPM	4400-4800
Circuit Breaker	40 amp Thermal
Lower Unit Gear Ratio	1.84:1
Tilt	Power
Trim	Power
Length	31-13/16"
Width	29 1/4" (overall)
Height	20 1/2" (above crankshaft L) 802 lbs. (pkg. weight)
Weight	

**MODEL:** **MERCUISER 180 w/Power**  
 Steering 180  
 Horsepower 4  
 Cylinders 224  
 Cubic Inches 8.8:1  
 Compression Ratio 4400-4800  
 Max. Recommended RPM 40 Amp Thermal  
 Circuit Breaker 1.84:1  
 Lower Unit Gear Ratio Power  
 Tilt Power  
 Trim 37-13/16"  
 Length 26"  
 Width 19 3/4" (above crankshaft L)  
 Height 28 1/4" (overall)  
 Weight 735 lbs. (pkg. weight)

**MODEL:** **MERCUISER 200 w/Power**  
 Steering 200  
 Horsepower 8  
 Cylinders 305  
 Cubic Inches 8.5:1  
 Compression Ratio 4200-4600  
 Max. Recommended RPM 40 Amp Thermal  
 Circuit Breaker 1.65:1  
 Lower Unit Gear Ratio Power  
 Tilt Power  
 Trim 36-3/16"  
 Length 28 1/2"  
 Width 20 3/4" (above crankshaft L)  
 Height 28 1/2" (overall)  
 Weight 893 lbs.

**MODEL:** **MERCUISER 205 w/Power**  
 Steering 205  
 Horsepower 6  
 Cylinders 262  
 Cubic Inches 9.3:1  
 Compression Ratio 4400-4800  
 Max. Recommended RPM 40 Amp Thermal  
 Circuit Breaker 1.84:1  
 Lower Unit Gear Ratio Power  
 Tilt Power  
 Trim 31-13/16"  
 Length 29 1/4"  
 Width 20" (above crankshaft L)  
 Height 802 lbs.  
 Weight

**MODEL:** **MERCUISER 230 w/Power**  
 Steering 230  
 Horsepower 8  
 Cylinders 305  
 Cubic Inches 8.5:1  
 Compression Ratio 4200-4600  
 Max. Recommended RPM 40 Amp Thermal  
 Circuit Breaker 1.50:1  
 Lower Unit Gear Ratio Power  
 Tilt Power  
 Trim 36-3/16"  
 Length 28 1/2"  
 Width 20" (above crankshaft L)  
 Height 27 3/4" (overall)  
 Weight 893 lbs. (pkg. weight)

**MODEL:** **MERCUISER 260 w/Power**  
 Steering 260  
 Horsepower 8  
 Cylinders 350  
 Cubic Inches 9.0:1  
 Compression Ratio 4200-4600  
 Max. Recommended RPM 40 Amp Thermal  
 Circuit Breaker 1.50:1  
 Lower Unit Gear Ratio Power  
 Tilt Power  
 Trim 36-3/16"  
 Length 28 1/2"  
 Width 20" (above crankshaft L)  
 Height 27 3/4" (overall)  
 Weight 907 lbs. (pkg. weight)

**MODEL:** **MERCUISER 350 MAGNUM**  
 w/Power Steering 270  
 Horsepower 8  
 Cylinders 350  
 Cubic Inches 9.0:1  
 Compression Ratio 4200-4600  
 Max. Recommended RPM 40 Amp Thermal  
 Circuit Breaker 1.50:1  
 Lower Unit Gear Ratio Power  
 Tilt Power  
 Trim 36-15/16"  
 Length 28-7/8"  
 Width 20-7/8" (overall)  
 Height 938 lbs.  
 Weight  
 \*Stainless steel propeller

**MODEL:** MERCUISER 454 MAGNUM  
 w/Power Steering  
 Horsepower 330  
 Cylinders 8  
 Cubic Inches 454  
 Compression Ratio 8.5:1  
 Max. Recommended RPM 4200-4600  
 Circuit Breaker 40 Amp Thermal  
 Lower Unit Gear Ratio 1.32:1  
 Tilt Power  
 Trim Power  
 Length 39"  
 Width 32"  
 Height 20-11/16" (overall)  
 Weight 1088 lbs.

\*Stainless steel propeller

**MODEL:** OMC 130 COBRA  
 Horsepower 130  
 Cylinders 4  
 Cubic Inches 181  
 Compression Ratio 8.5:1  
 Max. Recommended RPM 4200-4600  
 Circuit Breaker Fusible Link  
 Lower Unit Gear Ratio 1.71:1  
 Tilt Power  
 Trim Power  
 Length 33 1/2"  
 Width 24"  
 Height 31-5/8" (overall)  
 Weight 680 lbs.

**MODEL:** OMC 175 COBRA w/Power  
 Steering  
 Horsepower 175  
 Cylinders 6  
 Cubic Inches 262  
 Compression Ratio 9.3:1  
 Max. Recommended RPM 4200-4600  
 Circuit Breaker Fusible Link  
 Lower Unit Gear Ratio 1.68:1  
 Tilt Power  
 Trim Power  
 Length 31-3/8"  
 Width 25"  
 Height 32-1/16" (overall)  
 Weight 805 lbs.

**MODEL:** OMC 205 COBRA w/Power  
 Steering  
 Horsepower 205  
 Cylinders 6  
 Cubic Inches 262  
 Compression Ratio 9.3:1  
 Max. Recommended RPM 4400-4800  
 Circuit Breaker Fuse  
 Lower Unit Gear Ratio 1.68:1  
 Tilt Power  
 Trim Power  
 Length 31-3/8"  
 Width 25"  
 Height 32-1/16" (overall)  
 Weight 805 lbs.

**MODEL:** OMC 230 COBRA w/Power  
 Steering  
 Horsepower 230  
 Cylinders 8  
 Cubic Inches 305  
 Compression Ratio 8.5:1  
 Max. Recommended RPM 4200-4600  
 Circuit Breaker Fuse  
 Lower Unit Gear Ratio 1.50:1  
 Tilt Power  
 Trim Power  
 Length 35-3/8"  
 Width 27 3/4"  
 Height 32-7/8" (overall)  
 Weight 916 lbs.

**MODEL:** OMC 260 Cobra w/  
 Power Steering  
 Horsepower 260  
 Cylinders 8  
 Cubic Inches 350  
 Compression Ratio 9.0:1  
 Max. Recommended RPM 4200-4600  
 Circuit Breaker In-line fuse  
 Fuel Regular (94 oct. research)  
 Lower Unit Gear Ratio 1.41:1  
 Tilt Power  
 Trim Power  
 Length 36 1/4"  
 Width 29"  
 Height 19-7/8" (overall)  
 Weight 28-7/16" (above crankshaft L)  
 950 lbs.

**BOAT MODEL: Z-16**

MPH	RPM	GPH	MPG
15	3300	2.7	5.6
25	3900	3.1	8.1
35	5400	7.7	4.5
(Full Throttle)			
37-39	5800	7.8	4.9
0-20 M.P.H. Acceleration: 3.5 Seconds			

**BOAT MODEL: Z-16**

MPH	RPM	GPH	MPG
15	2500	2.9	5.2
25	3400	4.2	6.0
35	4600	6.3	5.6
(Full Throttle)			
42-44	5400	8.2	5.2
0-20 M.P.H. Acceleration: 2.9 Seconds			

**BOAT MODEL: X-16**

MPH	RPM	GPH	MPG
15	2100	3.6	4.2
25	2700	4.0	6.3
35	3800	7.3	4.8
(Full Throttle)			
43-45	4700	—	—
0-20 M.P.H. Acceleration: 3.6 Seconds			

**BOAT MODEL: X-16**

MPH	RPM	GPH	MPG
15	2200	3.6	4.2
25	2700	4.0	6.3
35	3800	7.3	4.8
(Full Throttle)			
43-45	4700	—	—
0-20 M.P.H. Acceleration: 3.7 Seconds			

**ENGINE 75 JOHNSON  
PROP 13 $\frac{3}{4}$ " x 17"**

MPH	RPM	GPH	MPG
15	3300	2.7	5.6
25	3900	3.1	8.1
35	5400	7.7	4.5
(Full Throttle)			
37-39	5800	7.8	4.9
0-20 M.P.H. Acceleration: 3.5 Seconds			

**ENGINE 90 EVINRUDE  
PROP 13 $\frac{3}{4}$ " x 17"**

MPH	RPM	GPH	MPG
15	2500	2.9	5.2
25	3400	4.2	6.0
35	4600	6.3	5.6
(Full Throttle)			
42-44	5400	8.2	5.2
0-20 M.P.H. Acceleration: 2.9 Seconds			

**ENGINE 130  
MERCURUISER  
PROP 13 $\frac{3}{4}$ " x 21"**

MPH	RPM	GPH	MPG
15	2100	3.6	4.2
25	2700	4.0	6.3
35	3800	7.3	4.8
(Full Throttle)			
43-45	4700	—	—
0-20 M.P.H. Acceleration: 3.6 Seconds			

**ENGINE 130 OMC  
PROP 13" x 19"**

MPH	RPM	GPH	MPG
15	2200	3.6	4.2
25	2700	4.0	6.3
35	3800	7.3	4.8
(Full Throttle)			
43-45	4700	—	—
0-20 M.P.H. Acceleration: 3.7 Seconds			

**BOAT MODEL: Z-17**

MPH	RPM	GPH	MPG
15	2800	3.5	4.3
25	4000	4.7	5.3
35	4800	7.5	4.7
(Full Throttle)			
42-44	5000	8.4	4.5
0-20 M.P.H. Acceleration: 3.3 Seconds			

**BOAT MODEL: Z-17**

MPH	RPM	GPH	MPG
15	2500	3.5	4.3
25	3200	5.0	5.0
35	4300	6.1	5.7
(Full Throttle)			
48-50	5700	11.2	4.4
0-20 M.P.H. Acceleration: 3.2 Seconds			

**BOAT MODEL: X-17**

MPH	RPM	GPH	MPG
15	2300	2.5	6.0
25	2900	4.0	6.3
35	3900	8.7	4.0
(Full Throttle)			
39-41	4300	—	—
0-20 M.P.H. Acceleration: 3.7 Seconds			

**BOAT MODEL: X-17**

MPH	RPM	GPH	MPG
15	2300	2.7	5.6
25	3000	3.6	6.9
35	3700	7.6	4.6
(Full Throttle)			
43-46	4700	—	—
0-20 M.P.H. Acceleration: 3.2 Seconds			

**ENGINE 115 EVINRUDE  
PROP 13" x 19"**

MPH	RPM	GPH	MPG
15	2800	3.5	4.3
25	4000	4.7	5.3
35	4800	7.5	4.7
(Full Throttle)			
42-44	5000	8.4	4.5
0-20 M.P.H. Acceleration: 3.3 Seconds			

**ENGINE 140 SUZUKI  
PROP 12 $\frac{1}{2}$ " x 23"**

MPH	RPM	GPH	MPG
15	2500	3.5	4.3
25	3200	5.0	5.0
35	4300	6.1	5.7
(Full Throttle)			
48-50	5700	11.2	4.4
0-20 M.P.H. Acceleration: 3.2 Seconds			

**ENGINE 120  
MERCURUISER  
PROP 14" x 19"**

MPH	RPM	GPH	MPG
15	2300	2.5	6.0
25	2900	4.0	6.3
35	3900	8.7	4.0
(Full Throttle)			
39-41	4300	—	—
0-20 M.P.H. Acceleration: 3.7 Seconds			

**ENGINE 130 MERCURUISER  
PROP 13 $\frac{3}{4}$ " x 21"**

MPH	RPM	GPH	MPG
15	2300	2.7	5.6
25	3000	3.6	6.9
35	3700	7.6	4.6
(Full Throttle)			
43-46	4700	—	—
0-20 M.P.H. Acceleration: 3.2 Seconds			

**BOAT MODEL: X-17****ENGINE 165 MERCUISER  
PROP 13½" x 23"**

MPH	RPM	GPH	MPG
15	2100	3.5	4.3
25	2600	4.4	5.7
35	3400	7.5	4.7
(Full Throttle)			
48-50	4450	12.0	4.1
0-20 M.P.H. Acceleration: 3.7 Seconds			

**BOAT MODEL: X-17****Selectrim ENGINE 130 O.M.C.  
PROP 13" x 19"**

MPH	RPM	GPH	MPG
15	2800	4.2	3.6
25	3300	4.9	5.1
35	3900	7.1	4.9
(Full Throttle)			
43-46	4500	—	—
0-20 M.P.H. Acceleration: 3.6 Seconds			

**BOAT MODEL: SX-17****ENGINE 120  
MERCUISER  
PROP 14" x 19"**

MPH	RPM	GPH	MPG
15	2300	2.5	6.0
25	2900	4.0	6.3
35	3900	8.7	4.0
(Full Throttle)			
39-42	4300	—	—
0-20 M.P.H. Acceleration: 3.6 Seconds			

**BOAT MODEL: SX-17****ENGINE 130  
MERCUISER  
PROP 13¾" x 21"**

MPH	RPM	GPH	MPG
15	2300	2.7	5.6
25	3000	3.6	6.9
35	3700	7.6	4.6
(Full Throttle)			
44-47	4700	—	—
0-20 M.P.H. Acceleration: 3.2 Seconds			

**BOAT MODEL: X-19  
X-19 Special****ENGINE 120  
MERCUISER  
PROP 14" x 19"**

MPH	RPM	GPH	MPG
10	1800	2.4	4.2
20	2900	3.0	6.7
35	3800	9.0	3.9
(Full Throttle)			
39-41	4350	—	—
0-20 M.P.H. Acceleration: 3.8 Seconds			

**BOAT MODEL: X-19  
X-19 Special****ENGINE 130  
MERCUISER  
PROP 13¾" x 21"**

MPH	RPM	GPH	MPG
15	2300	2.8	5.6
25	3000	3.8	6.6
35	3800	7.8	4.5
(Full Throttle)			
43-45	4600	—	—
0-20 M.P.H. Acceleration: 3.2 Seconds			

**BOAT MODEL: X-19****ENGINE 165 MERCUISER  
PROP 13½" x 23"**

MPH	RPM	GPH	MPG
15	2200	3.5	4.3
25	2700	4.5	5.6
35	3400	7.4	4.7
(Full Throttle)			
48-50	4400	12.8	3.8
0-20 M.P.H. Acceleration: 3.6 Seconds			

**BOAT MODEL: X-19****Selectrim ENGINE 130 O.M.C.  
PROP 13" x 19"**

MPH	RPM	GPH	MPG
15	2800	4.2	3.6
25	3300	4.9	5.1
35	3800	7.2	4.9
(Full Throttle)			
43-45	4500	—	—
0-20 M.P.H. Acceleration: 3.4 Seconds			

**BOAT MODEL: SX-19****ENGINE 130  
MERCURISER  
PROP 13¾" x 21"**

MPH	RPM	GPH	MPG
15	2300	2.8	5.6
25	3000	3.8	6.6
35	3800	7.8	4.5
(Full Throttle)			
44-47	4600	—	—
0-20 M.P.H. Acceleration: 3.2 Seconds			

**BOAT MODEL: SX-19****ENGINE 165  
MERCURISER  
PROP 13½" x 23"**

MPH	RPM	GPH	MPG
15	2300	3.6	4.3
25	2800	4.5	5.6
35	3500	7.4	4.7
(Full Throttle)			
48-50	4400	—	—
0-20 M.P.H. Acceleration: 3.7 Seconds			

**BOAT MODEL: CX-19****ENGINE 120 MERCURISER  
PROP 14" x 19"**

MPH	RPM	GPH	MPG
15	2300	2.7	5.6
25	3000	3.6	6.9
35	4000	9.5	3.7
(Full Throttle)			
38-40	4300	11.6	3.4
0-20 M.P.H. Acceleration: 5.3 Seconds			

**BOAT MODEL: CX-19****ENGINE 130 MERCURISER  
PROP 13¾" x 21"**

MPH	RPM	GPH	MPG
15	2300	2.6	5.8
25	3000	3.6	6.9
35	4000	8.8	4.0
(Full Throttle)			
42-44	4600	10.3	4.2
0-20 M.P.H. Acceleration: 4.5 Seconds			

**BOAT MODEL: CX-19****ENGINE 165 MERCURISER  
PROP 13½" x 23"**

MPH	RPM	GPH	MPG
15	2200	3.7	4.1
25	2800	4.7	5.3
35	3600	8.3	4.2
(Full Throttle)			
47-49	4400	13.2	3.6
0-20 M.P.H. Acceleration: 4.5 Seconds			

**BOAT MODEL: CX-19****ENGINE 130 O.M.C.  
Selectrim PROP 13" x 19"**

MPH	RPM	GPH	MPG
15	2900	4.3	3.5
25	3300	5.0	5.0
35	4000	7.2	4.9
(Full Throttle)			
42-44	4500	—	—
0-20 M.P.H. Acceleration: 4.6 Seconds			

**BOAT MODEL: SSV-187****ENGINE 140 JOHNSON  
PROP 13" x 19"**

MPH	RPM	GPH	MPG
15	1800	3.1	4.8
25	2700	5.3	4.7
35	3900	7.7	4.5
(Full Throttle)			
45-48	6000	—	—
0-20 M.P.H. Acceleration: 3.5 Seconds			

**BOAT MODEL: SSV-187****ENGINE 150 EVINRUDE  
PROP 14¼" x 21"**

MPH	RPM	GPH	MPG
15	2300	5.7	2.6
25	3100	6.8	3.7
35	4000	9.2	3.8
(Full Throttle)			
54-57	5500	—	—
0-20 M.P.H. Acceleration: 3.0 Seconds			

**BOAT MODEL: SSV-189**

MPH	RPM	GPH	MPG
15	1800	4.1	3.7
25	2800	4.7	5.3
35	3300	6.9	5.1
(Full Throttle)			
45-48	4300		
0-20 M.P.H. Acceleration: 3.6 Seconds			

**BOAT MODEL: SSV-189**

ENGINE 200 MERCUISER PROP 13 $\frac{3}{4}$ " x 21"			
MPH	RPM	GPH	MPG
15	1800	4.0	3.8
25	2300	4.5	5.6
35	3000	8.2	4.3
(Full Throttle)			
55-58	4600		
0-20 M.P.H. Acceleration: 2.9 Seconds			

**BOAT MODEL: SV-191**

ENGINE 130 MERCUISER PROP 13 $\frac{3}{4}$ " x 21"			
MPH	RPM	GPH	MPG
15	2600	2.9	5.2
25	3500	4.5	5.6
35	4600	10.7	3.3
(Full Throttle)			
36-38	4800	10.8	3.4
0-20 M.P.H. Acceleration: 4.1 Seconds			

**BOAT MODEL: SV-191**

ENGINE 165 MERCUISER PROP 13 $\frac{1}{2}$ " x 23"			
MPH	RPM	GPH	MPG
15	2000	3.3	4.5
25	2400	4.0	6.3
35	3400	7.6	4.6
(Full Throttle)			
46-48	4400	15.0	3.0
0-20 M.P.H. Acceleration: 3.8 Seconds			

**BOAT MODEL: SV-191**

ENGINE 180 MERCUISER PROP 13 $\frac{3}{4}$ " x 21"			
MPH	RPM	GPH	MPG
15	2100	3.4	4.4
25	2700	4.6	5.4
35	3400	7.0	5.0
(Full Throttle)			
49-51	4800	16.7	3.0
0-20 M.P.H. Acceleration: 3.6 Seconds			

**BOAT MODEL: SV-191**

ENGINE 200 MERCUISER PROP 14" x 19"			
MPH	RPM	GPH	MPG
15	1800	4.0	3.8
25	2700	4.7	5.3
35	3200	6.7	5.2
(Full Throttle)			
44-46	4200	18.8	2.4
0-20 M.P.H. Acceleration: 3.7 Seconds			

**BOAT MODEL: SV-191**

ENGINE 230 MERCUISER PROP 13 $\frac{1}{2}$ " x 23"			
MPH	RPM	GPH	MPG
15	1800	4.0	3.8
25	2500	4.8	5.2
35	2900	6.8	5.1
(Full Throttle)			
48-51	4500	17.0	3.4
0-20 M.P.H. Acceleration: 3.0 Seconds			

**BOAT MODEL: SV-191**

ENGINE 260 MERCUISER PROP 13 $\frac{1}{2}$ " x 23"			
MPH	RPM	GPH	MPG
15	1800	4.0	3.8
25	2100	4.4	5.7
35	3000	8.1	4.3
(Full Throttle)			
51-54	4600	21.4	2.5
0-20 M.P.H. Acceleration: 3.0 Seconds			

**BOAT MODEL: SV-191 ENGINE 130 COBRA O.M.C.  
PROP 13" x 19"**

MPH	RPM	GPH	MPG
15	2800	4.2	3.6
25	3200	4.7	5.3
35	4000	7.2	4.9
36-39	4400	10.2	3.8

0-20 M.P.H. Acceleration: 4.1 Seconds

**BOAT MODEL: SV-191 ENGINE 260 COBRA O.M.C.  
PROP 14 1/4" x 21"**

MPH	RPM	GPH	MPG
15	1800	4.1	3.7
25	2200	4.5	5.6
35	3000	8.1	4.2
	(Full Throttle)		
54-57	4400	22.0	2.6

0-20 M.P.H. Acceleration: 3.0 Seconds

**BOAT MODEL: SSV-197 ENGINE 175 JOHNSON  
PROP 14 1/4" x 21"**

MPH	RPM	GPH	MPG
15	2200	5.8	2.6
25	3000	6.8	3.7
35	3900	9.3	3.8
	(Full Throttle)		
53-56	5800		

0-20 M.P.H. Acceleration: 3.0 Seconds

**BOAT MODEL: SSV-199 ENGINE 230 MERCURISER  
PROP 14" x 19"**

MPH	RPM	GPH	MPG
15	1800	4.0	3.8
25	2500	4.8	5.2
35	2900	6.8	5.1
	(Full Throttle)		
50-53	4500		

0-20 M.P.H. Acceleration: 3.0 Seconds

**BOAT MODEL: SSV-199**

MPH	RPM	GPH	MPG
15	1800	4.0	3.8
25	2100	4.4	5.7
35	3000	8.1	4.3
	(Full Throttle)		
54-57	4600		

0-20 M.P.H. Acceleration: 2.9 Seconds

**BOAT MODEL: CVX-16 ENGINE 90 MERCURY  
PROP 12 3/4" x 21"**

MPH	RPM	GPH	MPG
15	2400	3.5	4.3
25	3800	4.5	5.6
35	4500	7.1	4.9
	(Full Throttle)		
41-43	5000	8.2	5.1

0-20 M.P.H. Acceleration: 3.2 Seconds

**BOAT MODEL: CVX-16 ENGINE 115 EVINRUDE  
PROP 12 3/4" x 21"**

MPH	RPM	GPM	MPG
15	2400	3.4	4.4
25	3200	4.5	5.6
35	4400	7.0	5.0
	(Full Throttle)		
47-49	5000	8.4	5.7

0-20 M.P.H. Acceleration: 3.0 Seconds

**BOAT MODEL: CVX-18 ENGINE 230 MERCURISER  
PROP 13 3/4" x 21"**

MPH	RPM	GPH	MPG
15	1800	4.1	3.7
25	2400	4.8	5.2
35	2800	6.8	5.1
	(Full Throttle)		
52-56	4500		

0-20 M.P.H. Acceleration: 3.4 Seconds



**BOAT MODEL: CVX-18****ENGINE 260  
MERCUISER  
PROP 13½" x 23"**

MPH	RPM	GPH	MPG
15	1800	4.1	3.7
25	2400	4.6	5.4
35	3000	8.2	4.3

(Full Throttle)

59-63 4600  
0-20 M.P.H. Acceleration: 2.9 Seconds**BOAT MODEL: SPRINT****ENGINE 175 JOHNSON  
PROP 14¼" x 21"**

MPH	RPM	GPH	MPG
15	2600	5.6	2.7
25	3100	6.6	3.8
35	4100	9.3	3.8

(Full Throttle)

55-57 5200 17.8 3.1  
0-20 M.P.H. Acceleration: 3.1 Seconds**BOAT MODEL: SPRINT****ENGINE 200 JOHNSON  
PROP 14" x 23"**

MPH	RPM	GPH	MPG
15	1900	5.8	2.6
25	2700	6.9	3.6
35	3500	10.0	3.5

(Full Throttle)

57-60 5600 18.6 3.2  
0-20 M.P.H. Acceleration: 3.0 Seconds**BOAT MODEL: CV-23****ENGINE 260 MERCUISER  
PROP 13¾" x 21"**

MPH	RPM	GPH	MPG
15	2000	4.3	3.5
25	2600	4.9	5.1
35	3300	8.3	4.2

(Full Throttle)

53-56 4600 21.7 2.5  
0-20 M.P.H. Acceleration: 3.6 Seconds*\*Stainless Steel***BOAT MODEL: CV-23****ENGINE 260 COBRA O.M.C.  
Selectrim PROP 14¼" x 19"**

MPH	RPM	GPH	MPG
15	2000	4.3	3.5
25	2600	5.0	5.0
35	3400	8.5	4.1

(Full Throttle)

52-55 4400 22.0 2.5  
0-20 M.P.H. Acceleration: 3.7 Seconds*\*Stainless Steel***BOAT MODEL: HPV-165****ENGINE 75 JOHNSON  
PROP 13¼" x 17"**

MPH	RPM	GPH	MPG
15	3300	2.6	5.8
25	3900	3.0	8.3
35	5300	7.8	4.5

(Full Throttle)

36-38 5600 8.1 4.6  
0-20 M.P.H. Acceleration: 3.6 Seconds**BOAT MODEL: HPV-165****ENGINE 90 MERCURY  
PROP 12¾" x 21"**

MPH	RPM	GPH	MPG
15	2300	3.4	4.4
25	3700	4.4	5.7
35	4600	7.0	5.0

(Full Throttle)

41-43 4800 8.2 5.0  
0-20 M.P.H. Acceleration: 3.2 Seconds**BOAT MODEL: HPV-165****ENGINE 115 EVINRUDE  
PROP 12¾" x 21"**

MPH	RPM	GPH	MPG
15	2300	3.3	4.5
25	3200	4.4	5.7
35	4400	7.0	5.0

(Full Throttle)

47-49 5000 8.8 5.4  
0-20 M.P.H. Acceleration: 3.0 Seconds

**BOAT MODEL: HPV-175****ENGINE 140 EVINRUDE  
PROP 13 1/4" x 17"**

MPH	RPM	GPH	MPG
15	2100	3.5	4.3
25	3300	4.4	5.7
35	4000	6.9	5.1
	(Full Throttle)		
45-48	5300	11.2	4.1
0-20 M.P.H. Acceleration: 3.4 Seconds			

**BOAT MODEL: HPV-175****ENGINE 175 JOHNSON  
PROP 14 1/4" x 21"**

MPH	RPM	GPH	MPG
15	2400	5.6	2.7
25	3000	6.7	3.7
35	3900	9.2	3.8
	(Full Throttle)		
56-59	5200	17.7	3.3
0-20 M.P.H. Acceleration: 2.9 Seconds			

**BOAT MODEL: SSV-178****ENGINE 115 EVINRUDE  
PROP 13" x 19"**

MPH	RPM	GPH	MPG
15	2800	3.5	4.3
25	4000	4.7	5.3
35	4800	7.5	4.7
	(Full Throttle)		
42-44	5000	8.4	4.5
0-20 M.P.H. Acceleration: 3.3 Seconds			

**BOAT MODEL: SSV-178****ENGINE 140 SUZUKI  
PROP 12 1/2" x 23"**

MPH	RPM	GPH	MPG
15	2500	3.5	4.3
25	3200	5.0	5.0
35	4300	6.1	5.7
	(Full Throttle)		
48-50	5700	11.2	4.4
0-20 M.P.H. Acceleration: 3.2 Seconds			

**BOAT MODEL: V-216****ENGINE 150 EVINRUDE  
PROP 15 1/2" x 15"**

MPH	RPM	GPH	MPG
15	3200	7.6	2.0
25	4000	9.6	2.6
	(Full Throttle)		
30-33	5200	14.0	2.4
0-20 M.P.H. Acceleration: 4.8 Seconds			

**BOAT MODEL: HPV-216****ENGINE 200 JOHNSON  
PROP 14 1/2" x 19"**

MPH	RPM	GPH	MPG
15	2900	3.1	4.8
25	3500	9.2	2.7
35	4600	15.3	2.3
	(Full Throttle)		
40-43	5500	24.6	1.7
0-20 M.P.H. Acceleration: 4.1 Seconds			

