

1 9 8 5

Glastron[®]

SALESMAN'S HANDBOOK

Due to continuing improvements and changes in product features and options, Glastron does not guarantee the availability of all product features and options as displayed in this book, and reserves the right to change specifications without notice.

THIS BOOK IS FOR GLASTRON SALESMAN'S REFERENCE ONLY AND IS NOT TO BE GIVEN OUT OR REPRODUCED.

1985 BOAT LIMITED WARRANTY

Company warrants each new boat manufactured by Company, to the original purchaser only, to be free from defects in material and workmanship under normal use or service for a period of one year from date of retail purchase from an authorized dealer.

Any part of the boat manufactured by Company and found in the judgement of Company to be defective in material or workmanship will be repaired or replaced by an authorized dealer during said warranty period. Warranty repairs or replacement do not extend the original one year warranty.

All warranty work must be approved in advance by an authorized dealer. The expense of transporting the boat to and from the dealer as well as any derigging or rerigging required in order to effect repairs will be paid for by the owner. Proof of purchase may be required.

DISCLAIMER

**THIS WARRANTY DOES NOT COVER
THE FOLLOWING:**

UPHOLSTERY, CARPET, CANVAS, WIND-SHIELD BREAKAGE, OR THE CRACKING, CRAZING, OR BLISTERING OF GELCOAT;

ANY BOAT OPERATED FOR RACING OR COMMERCIAL PURPOSES OR IN ANY WAY CONTRARY TO THE OPERATING OR MAINTENANCE INSTRUCTIONS AS SPECIFIED IN THE OWNER'S MANUAL.

THIS WARRANTY ALSO DOES NOT APPLY TO EQUIPMENT AND ACCESSORIES NOT MANUFACTURED BY COMPANY.

IN ADDITION, THIS WARRANTY DOES NOT EXTEND TO REPAIRS MADE NECESSARY BY NORMAL WEAR OR BY USE OF PARTS, ACCESSORIES OR MODIFICATIONS WHICH IN THE JUDGEMENT OF COMPANY ARE EITHER INCOMPATIBLE WITH THE BOAT OR ADVERSELY AFFECT ITS OPERATION. NOR DOES THIS WARRANTY COVER ANY COMPANY BOAT WHICH HAS BEEN POWERED OR LOADED IN EXCESS OF LIMITS SPECIFIED ON THE CAPACITY PLATE ON EACH BOAT.

ALL WARRANTIES INCLUDING THE IMPLIED WARRANTIES OF MERCHANTABILITY, FITNESS FOR A PARTICULAR PURPOSE, OR OTHERWISE, ARE DISCLAIMED IN THEIR ENTIRETY. COMPANY'S OBLIGATIONS HEREUNDER ARE LIMITED TO THE REPAIR OR REPLACEMENT OF DEFECTIVE PARTS, AS AFORESAID, AND COMPANY DOES NOT ASSUME OR AUTHORIZE ANYONE TO ASSUME FOR THEM ANY OTHER OBLIGATION, CONSEQUENTIAL OR OTHERWISE.

This warranty applies only to boats sold in the United States and Canada.

1985 TRAILER LIMITED WARRANTY

Company warrants each new trailer manufactured by Company, to the original purchaser only, to be free from defects in material and workmanship under normal use or service for one year from date of retail purchase from an authorized dealer.

Any part of the trailer manufactured by Company and found in the judgement of Company to be defective in material or workmanship will be repaired or replaced, by an authorized dealer. Warranty repairs or replacement do not extend the original one year warranty.

All warranty work must be approved in advance by an authorized dealer. The expense of transporting the trailer to and from the dealer will be paid for by the owner. Proof of purchase may be required.

DISCLAIMER

THIS WARRANTY DOES NOT COVER ANY TRAILER THAT HAS BEEN SUBJECT TO MISUSE, NEGLIGENCE, ACCIDENT OR OPERATED IN ANY WAY CONTRARY TO THE OPERATING OR MAINTENANCE INSTRUCTIONS AS SPECIFIED IN THE OWNER'S-OPERATOR'S MANUAL. THE WARRANTY DOES NOT COVER ANY TRAILER THAT HAS BEEN ALTERED OR MODIFIED SO AS TO ADVERSELY AFFECT THE TRAILER'S OPERATION, PERFORMANCE, OR DURABILITY, OR THAT HAS BEEN ALTERED OR MODIFIED SO AS TO CHANGE THE INTENDED USE OF THE TRAILER. IN ADDITION, THE WARRANTY DOES NOT EXTEND TO REPAIRS MADE NECESSARY BY NORMAL WEAR, OR BY THE USE OF PARTS OR ACCESSORIES WHICH IN THE JUDGEMENT OF COMPANY ARE EITHER INCOMPATIBLE WITH THE TRAILER OR ADVERSELY AFFECT ITS OPERATION, PERFORMANCE OR DURABILITY. THIS WARRANTY DOES NOT

COVER: (1) ANY BOATS TRANSPORTED OR STORED ON TRAILER; (2) OTHER EQUIPMENT OR ACCESSORIES CARRYING THEIR OWN INDIVIDUAL WARRANTIES; (3) MACHINERY, EQUIPMENT AND ACCESSORIES NOT FACTORY INSTALLED; (4) TRAILERS USED FOR COMMERCIAL PURPOSES; (5) ROAD GRAVEL DAMAGE TO PAINT; (6) FADING OF CARPET OR PAINT DUE TO NORMAL WEAR OR WEATHERING; (7) ANY TRAILER WHICH HAS BEEN OVERLOADED IN EXCESS OF THE CAPACITY STATED ON THE IDENTIFICATION PLATE AND IN THE OWNER'S-OPERATOR'S MANUAL.

ALL WARRANTIES INCLUDING THE IMPLIED WARRANTIES OF MERCHANTABILITY, FITNESS FOR A PARTICULAR PURPOSE, OR OTHERWISE, ARE DISCLAIMED IN THEIR ENTIRETY. COMPANY'S OBLIGATIONS HEREUNDER ARE LIMITED TO THE REPAIR OR REPLACEMENT OF DEFECTIVE PARTS, AS AFORESAID, AND COMPANY DOES NOT ASSUME OR AUTHORIZE ANYONE TO ASSUME FOR THEM ANY OTHER OBLIGATION, CONSEQUENTIAL OR OTHERWISE.

This warranty applies only to trailers sold in the United States and Canada.

GLASTRON AND GLASTRON/CARLSON BOAT LINE

Glastron has not chosen the easiest or cheapest approach to boat construction, but it is the one which created satisfied customers year after year.

This handbook will provide you, the dealer, with information pertinent to each boat in the Glastron and Glastron/Carlson model line. Its size is such that it can be carried with you on the showroom floor and referred to should specific questions come up pertaining to specifications, features, or safety standards.

While each Glastron boat may be constructed in a different manner to suit its design, use and capability, there are many items which remain standard throughout the Glastron line.

HAND LAY-UP CONSTRUCTION

Hand lay-up construction is the primary method of manufacture in all Glastron and Glastron/Carlson boats. In the hand lay-up method, three basic raw materials, fiberglass mat, fiberglass roving and resin are used in the basic lay-up of most hulls and decks. In strength and construction the hand lay-up method can be compared with plywood lamination. Plywood obtains its strength and resilience through its continuous layers, one bonded to the other. The same principle applies to the hand lay-up method of building a fiberglass boat.

It should be noted that certain parts, due to their complex design, lend themselves to the chopper method of construction which avoids excessive overlaps, and heat shrinkage marks. At the present time, this technique is being used on certain small parts and in certain complex liner/deck model parts.

Each boat receives a different hull lay-up, depending upon its size and horsepower requirements.

In each model, the keel areas of fiberglass are overlapped, thereby providing a double thickness in these areas of impact.

5

STRINGER SYSTEM

Each boat contains a rigid stringer system to support the hull and maintain its uniform shape. These stringers are encapsulated in fiberglass and bonded to the hull to assure a rigid single structure. The floor is then fastened in place to the stringer system.

FUEL SYSTEMS

All fuel systems comply with current Boating Industry Association specifications. All fuel tanks are pressure checked when the fuel lines are attached, to assure that there are no leaks around the fittings. In addition, each installed fuel tank includes anti-siphon protection to reduce the possibility of fuel spillage.

SEAT AND SEAT VINYL

Glastron manufactures almost all of their own seats. Wood used in seats, as well as all exposed wood in the boat, is dipped in wood preservative in order to provide maximum protection against the possibility of delamination and rot. All plywood is bonded with waterproof exterior grade glue. Joints are glued and T-nuts are used extensively. Vinyls used in seats and other areas of the boats are the highest standard 32 oz. marine grade vinyls and have been checked in Glastron's weatherometer to determine their durability under ultraviolet light and weathering. Many Glastron models utilize a back-to-back sleeper seat which may be extended for the convenience of the owner.

GELCOATS

Gelcoats used in Glastrons are one of the added features in creating long lasting value. A gelcoat formula was developed jointly by Glastron and its resin and pigment suppliers. This gelcoat is applied at an average thickness of 20 ml.-22 ml. (wet), 16 ml.-18 ml. (dry) to create a bright, durable finish. Tests in Glastron's weatherometer indicate that the finish resists fading, chalking, crazing, and blistering.

6

APPROXIMATE SPEED

Approximate speed ranges are based on actual speed tests measured by radar. Boats are tested with various props and under varying weight/load conditions to determine the recommended prop for optimum performance. Keep in mind that optimum performance provides the best performance through all r.p.m. ranges and does not necessarily provide the highest peak speed performance.

FOAM FLOTATION

All boats manufactured by Glastron and Glastron/Carlson comply with the U.S. Coast Guard regulations and B.I.A. standards for flotation. All O/B's under 20 feet have level flotation. All other models have basic flotation.

B.I.A. CERTIFICATION

All boats manufactured by Glastron and Glastron/Carlson are certified by the Boating Industry Association as having met current established standards in the areas of fuel and electrical systems, compartment ventilation, steering, lighting, load capacities, flotation and horsepower limitations (O/B only). All Glastron and Glastron/Carlson boats are manufactured in compliance with U.S. Coast Guard Federal Regulations.

Many questions have arisen concerning B.I.A. certification of horsepower for outboards. The U.S. Coast Guard and many states now use this certification as a standard for horsepower limitation on all manufacturer's boats. This horsepower certification is derived in the following manner. NOTE: Different methods may be used for smaller boats having no remote steering or different hull forms.

- (1) Multiply the length of the boat in feet and tenths of feet times the maximum transom width in feet and tenths of feet.
- (2) Round off the previous answer down to the nearest whole number and multiply by two.

- (3) Subtract 90.
- (4) If the number is not a multiple of five, raise it to the next multiple of five.

EXAMPLE:

Glastron SSV-176-H.P. calculation

Length	17.10
Transom Width	<u>× 6.62</u>
	113.20

Round off to 113

Multiply by 2

Subtract 90

Round off to next higher multiple of 5 = 140 H.P.

$$113 \times 2 = 226$$

$$226 - 90 = 136$$

This will provide you with the maximum B.I.A. certified and U.S.C.G. horsepower rating which can be established for a specific model of boat.

Glastron does not recommend overpowering. To do so will result in voiding the warranty.

ENGINE WEIGHT CHART

All sterndrives have been shown without engine weight. To arrive at the total boat weight with engine installed, refer to boat weight on individual model specifications page and add applicable engine weight as found in engine specification section.

Keep in mind when deriving trailer capacity that this weight does not take into consideration additional weight loads for fuel, gear, anchors, battery, etc., which the trailer will have to support.

PROP RECOMMENDATIONS

Glastron has recommended the prop which, in our opinion, provides the best all-around performance for the sterndrive engine-boat combination. Please keep in mind that altitude, load conditions, temperature, humidity, tuning, etc., can all affect a given boat's performance. Therefore, performance may vary dependent upon condition.

DEFINITIONS OF BOAT MEASUREMENTS

Length Overall (LOA)—Distance along the centerline from the tip of the bow to the aft-most part of the hull.

Maximum Beam—Maximum width of the boat.

Transom Width—Maximum width of the boat at transom.

Depth—Vertical distance from lowest point of the keel to highest point of the boat, excluding windshields, lights and other removable components.

Transom—Vertical distance at boat's centerline from the keel/transom intersection to the transom top.

Maximum Depth—Vertical distance from lowest point of the keel to the highest point of boat, including windshields.

Storage Capacity—Total number of cubic feet of available storage space.

Cockpit Depth—Vertical distance from boat floor to top of gunwale as measured at the driver seat.

Length Overall on Trailer—Distance measured along the boat centerline, from forward-most point of trailer to aft-most point of motor/outdrive.

Boat Height on Trailer—Vertical Distance from ground to highest point of boat, including windshield.

Draft (Drive unit up)—Total number of inches of boat and/or motor and drive unit below the waterline. Measured unloaded, with the motor/drive-unit in the full up position.

Draft (Drive unit down)—Total number of inches of boat and/or motor and drive unit below the waterline. Measured unloaded, with the motor/drive-unit in the full down position.

CUSTOM TRAILERS

Two types of custom trailers are offered:

The GLASTRON CUSTOM ALUMINUM TRAILER—Highly styled trailers of lightweight, non-corrosive aluminum.

The GLASTRON CUSTOM STEEL TRAILER—Economical trailers of rugged welded steel construction.

ALL GLASTRON CUSTOM STEEL AND ALUMINUM TRAILERS comply with the FEDERAL DEPARTMENT OF TRANSPORTATION, the SOCIETY OF AUTOMOTIVE ENGINEERS and the TRAILER AUTOMOTIVE ENGINEERS and the TRAILER MANUFACTURERS ASSOCIATION safety standards. These cover areas such as lighting, de-rating of automotive tires for trailer use, proper gross and axle weight values, brake systems, and Universal Vehicle Identification Code.

Both trailers share many features for easy, trouble free trailering, launching and loading. These include:

- Low profile, wide track design for stable towing as well as easy launching and loading.
- Soft riding automotive tires on a variety of wheel styles including the optional aluminum mag.
- Color coordination with each Glastron boat.
- BEARING BUDDY axle with waterproof hubs and bearing system.
- Custom fitted bunks, engineered for maximum hull support. The bunk placement also insures easy and sure centering of the boat onto the trailer, making guide-on devices such as side boards or rollers unnecessary.
- Full enclosed fenders with carpet decks fore and aft.

GLASTRON CUSTOM ALUMINUM TRAILERS

The aluminum construction of this line of Glastron Trailers combines the non-corrosive properties of aluminum with its inherent weight saving, to produce a trailer that weighs about $\frac{1}{3}$ less than conventional trailers, and keeps its new look for years.

The natural flex of aluminum has been utilized in its engineering. Tests have shown that the aluminum trailer absorbs approximately 50% of road shock that conventional steel trailers transmit to the boat and its substructure.

The rails are extruded from heat treated aluminum alloys and include an integral raceway for wiring. The initial design for the 4 $\frac{1}{2}$ " and 5 $\frac{1}{2}$ " rails was computer assisted to surpass the ultimate strength of comparable steel rails. On-going testing and product revisions have added both additional strength and durability.

The aluminum frame is riveted together using aluminum compression rivets, as opposed to bucked rivets which vary in strength, or heli-arc welding which anneals heat treated aluminum.

The color matched paint is high solid polyester, which is applied electrostatically over the chrome converted aluminum and then baked. This results in a high quality finish that is flexible enough to minimize the chipping and flaking action of rocks and gravel.

All aluminum trailers come with accent striping as standard equipment. This stripe is protected by ribs extruded onto the rails.

GLASTRON CUSTOM STEEL TRAILERS

The design of this line of trailers combines the economy of steel with the rugged strength of welded construction. Rather than structural steel or tubing, the Glastron steel trailers utilize a custom rolled formed 4 $\frac{1}{2}$ " rail of 11 or 7 gauge mild steel. This gives it the smooth, clean appearance that structural steel cannot, and without the water trapping properties of tubing.

The rails are formed in a sweeping curve, not pieced and welded together.

In all, about 90% of all welds are hidden, or are not apparent when the boat is on the trailer. Mig welding is used with only cosmetic, superficial grinding when necessary.

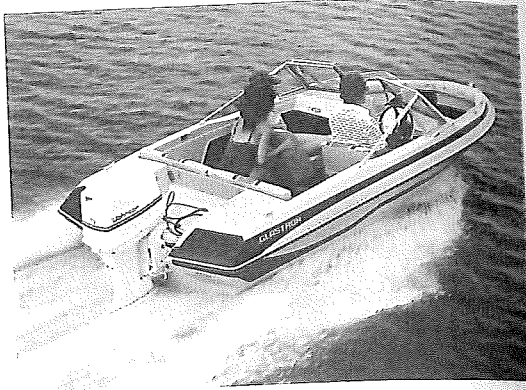
Fenders and decks are bolted on the frame, again to eliminate visible welds, as well as increase serviceability.

In addition to baked on polyester paint, the steel trailer receives a baked on layer of zinc primer after a lengthy session in the cleaning and etching tanks.

Slotted steel wheels painted to match the trailer and boat are standard, as are chrome lug bolts.

All bunks are positioned for maximum hull support and guide-on characteristics. A unique combination of square shanked, high strength fasteners, load angles, and a short slot allows for the flexibility of small adjustments for hull variances while holding the bunk in a permanent position.

SSV-151



SPECIFICATIONS

LOA 15'5" 4.7M	Approximate Weight 700 lbs. 317 kg.
Beam 77½" 1.97M	Ice Box Capacity .7 c.f. 19 qt. 18 l.
Depth 30" .76M	Transom Width 74¾" 1.89M
Maximum Depth 48" 1.2M	Max. Horsepower 75
Stor. Capacity 8.2 c.f. .2 cu.m.	Motor Shaft Length 20"
LOA on Trailer 18'02" 5.5M	Cockpit Depth 21" .5M
Steering Mechanical	Boat Ht. on Trailer 63" 1.6M
Max. Load 1160 lbs. 526 kg.	Fuel Capacity N/A
Max. Persons Load 5 or 610 lbs. 277 kg.	
Trailer GA-15 SG-15	Draft: A. Drive Unit Up 8" .2M
	B. Drive Unit Down 25" .6M

STANDARD COLORS

Opaque Blue/Grey
 Opaque Brown/Taupe
 Opaque Crimson/Taupe

OPTIONAL COLOR (at extra charge)

Metallflake Blue/Blue

SSV-151

STANDARD FEATURES:

- Anodized Aluminum bow rails
- Concealed electric horn
- Walk-thru curtain
- Hand-laid fiberglass construction
- Bench and bucket seats
- Two cushioned bow seats with lean-backs
- Walk-through tempered glass windshield
- Plush carpet
- Chrome-plated hardware
- Running lights with removable stern light

- Stainless steel bow eye and ski eyes
- Fuel tank compartment behind bench seat
- In-floor ski storage
- Level flotation
- B.I.A. certified
- Easy-up soft top with boot cover
- Ice chest in floor

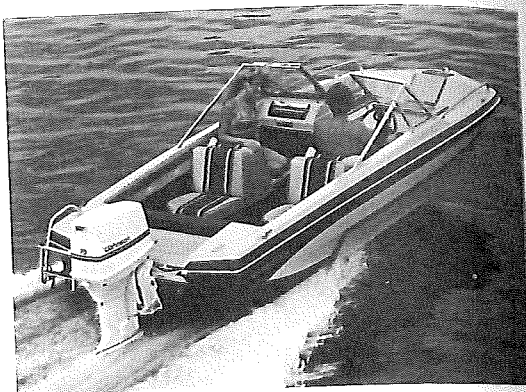
OPTIONS:

- Side and aft curtains
- Tonneau cover
- Custom mooring cover

FACTORY OPTIONS:

- Stern boarding ladder

T-162



SPECIFICATIONS

LOA 15'8½" 4.8M Approximate Weight 725 lbs. 329 kg.
Beam 74¼" 1.9M Ice Box Capacity 9 c.f. 27 qt. 25 l.
Depth 36¼" .92M Transom Width 71" 1.9M
Maximum Depth 54" 1.4M Max. Horsepower 75
Stor. Capacity 7.0 c.f. .2 cu.m. Motor Shaft Length 20"
LOA on Trailer 18'09" 5.7M Cockpit Depth 25" .6M
Steering Mechanical Boat Ht. on Trailer 69" 1.8M
Max. Load 1350 lbs. 612 kg. Fuel Capacity N/A
Max. Persons Load 6 or 775 lbs. 352 kg.
Trailer TA-16 ST-16 Draft: A. Drive Unit Up 10¾" .3M
 B. Drive Unit Down 28¼" .7M

STANDARD COLORS

Opaque Blue/Grey
Opaque Brown/Taupe
Opaque Crimson/White

OPTIONAL COLOR (at extra charge)

Metallflake Blue/Blue

T-162

STANDARD FEATURES:

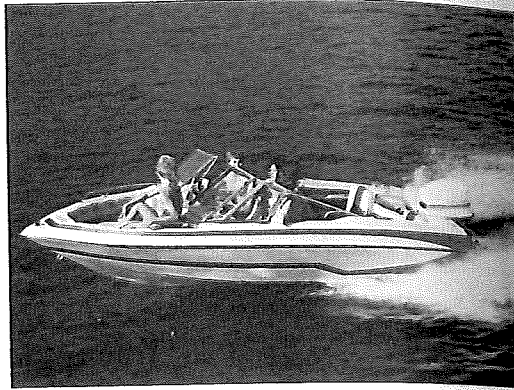
Back-to-back lounge seats
Built-in ice chest
Lockable glove box
Carpeted storage areas
Walk-thru curtain
Concealed electric horn
Hand-laid fiberglass construction
Walk-thru windshield
Soft top and boot
2 ski eyes
Drinkholder: including stepped design which accommodates foam-insulated-type drinkholder.

Bow seating
Ski storage in floor
Anodized aluminum bow rails
Storage under bow seats
Forward bow locker
Level foam flotation
B.I.A. certified
Stern Boarding Ladder

OPTIONS:

Side and aft curtains
Tonneau bow cover
Mooring cover

SSV-167



SPECIFICATIONS

LOA 16' 2 1/4" 4.9M	Approximate Weight 860 lbs. 391 kg.
Beam 79 1/4" 2.0M	Ice Box Capacity 1.0 c.f. 30 qt. 28 l.
Depth 38 3/4" 1.0M	Transom Width 77 1/4" 1.9M
Maximum Depth 51" 1.2M	Max. Horsepower 120
Stor. Capacity 13.0 c.f. 4 cu.m.	Motor Shaft Length 20"
LOA on Trailer 19' 0" 5.8M	Cockpit Depth 25 3/4" .7M
Steering Mechanical	Boat Ht. on Trailer 72" 1.8M
Max. Load 1290 lbs. 585 kg.	Fuel Capacity 18 gal
Max. Persons Load 6 or 885 lbs. 388 kg.	
Trailer GA-16 SG-16	Draft: A. Drive Unit Up 11 1/2" .3M
	B. Drive Unit Down 29 1/4" .7M

STANDARD COLORS

Opaque Blue/Grey
 Opaque Brown/Taupe
 Opaque Crimson/White

OPTIONAL COLORS (at extra charge)

Metalflake Blue/Blue
 Metalflake Brown/Taupe
 Metalflake Black/Grey
 Metalflake Silver/Grey
 Metalflake Red/White

SSV-167

STANDARD FEATURES:

Built-in jump seats
 In-floor ski locker with teak lid
 Stainless steel bow rails
 Stainless steel boarding ladder
 Deluxe steering wheel
 Deluxe lockable glove box
 Carpeted storage areas
 Walk-thru curtain
 Hand-laid fiberglass construction
 Back-to-back fold down lounge seats
 Walk-thru tempered glass windshield
 Chrome-plated hardware
 Plush carpet
 Teak step pads
 Concealed electric horn
 Drinkholder: including stepped design which accommodates foam-insulated-type drinkholder.

Built-in fuel tank
 Stainless steel bow eye and ski eye
 Soft top system with boot cover
 Running lights with removable stern light
 Foam-cushioned bow seating with lean-backs
 Built-in ice chest under bow seat with thru-hull drain
 Speedometer
 Tachometer
 Level flotation
 B.I.A. certified
 Bilge pump
 Electric fuel gauge

OPTIONS:

Tonneau bow cover
 Side and stern curtains
 Custom mooring cover

SSV-176



SPECIFICATIONS

LOA 17' 1/4" 5.0M	Approximate Weight 955 lbs. 430 kg.
Beam 83" 2.1M	Ice Box Capacity .8 c.f. 25 qt. 24 l.
Depth 46 3/4" 1.2M	Transom Width 79" 2.0M
Maximum Depth 59" 1.5M	Max. Horsepower 140
Stor. Capacity 17.2 c.f. .5 cu.m.	Motor Shaft Length 20"
LOA on Trailer 21' 09" 6.6M	Cockpit Depth 30" .8M
Steering Mechanical	Boat Ht. on Trailer 73" 1.9M
Max. Load 1550 lbs. 703 kg.	Fuel Capacity 24 gal.
Max. Persons Load 7 or 1050 lbs. 476 kg.	
Trailer G-17 SG-17	Draft: A. Drive Unit Up 10 1/2" .3M
	B. Drive Unit Down 28" .71M

STANDARD COLORS

Opaque Blue/Grey
 Opaque Brown/Taupe
 Opaque Crimson/White

OPTIONAL COLORS (at extra charge)

Metallflake Blue/Blue
 Metallflake Brown/Taupe
 Metallflake Black/Grey
 Metallflake Silver/Grey
 Metallflake Red/White

SSV-176

STANDARD FEATURES:

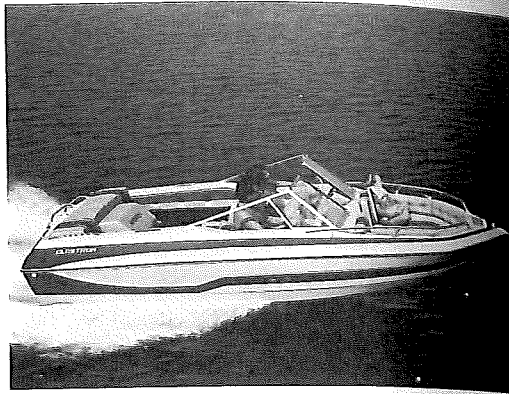
- Removable Igloo ice chest
- Storage under jump seats and bow seats
- Stainless steel bow rails
- Built-in fuel tank
- Deluxe sport steering wheel
- Hand-laid fiberglass construction
- Stainless steel boarding ladder
- In-floor ski locker with teak lid
- Deluxe lockable glove box
- Carpeted storage areas
- Walk-thru curtain
- Two back-to-back lounge seats
- Lift-up table between jump seats
- Walk-thru tempered glass windshield
- Drinkholder: including stepped design which accommodates foam-insulated-type drinkholder.

- Chrome-plated hardware
- Easy-up soft top with boot cover
- Running lights with removable stern light
- Stainless steel bow eye and ski eyes
- Stern jump seats
- Side storage trays
- Rack and pinion steering
- Concealed electric horn
- Speedometer
- Tachometer
- Teak step pads
- Level flotation
- B.I.A. certified
- Electric fuel gauge
- Bilge pump

OPTIONS:

- Side and stern curtains
- Custom mooring cover
- Tonneau Bow cover

SSV-177



SPECIFICATIONS

LOA 17' 1" 5.2M	Approximate Weight 1100 lbs. 476 kg.
Beam 83" 2.1M	Ice Box Capacity .8 c.f. 24 qt. 22 l.
Depth 46 3/4" 1.2M	Transom Width 79" 2.0M
Maximum Depth 60 1/2" 1.6M	Max. Horsepower N/A
Stor. Capacity 12.9 c.f. .37 cu.m.	Motor Shaft Length N/A"
LOA on Trailer 20' 2 3/4" 6.2M	Cockpit Depth 29 1/2" .7M
Steering Mechanical	Boat Ht. on Trailer 77 1/4" 1.9M
Max. Load 1050 lbs. 476 kg.	Fuel Capacity 24 gal.
Max. Persons Load 7 or 1050 lbs. 476 kg.	
Trailer GA-17 SG-17	Draft: A. Drive Unit Up 14" .4M
	B. Drive Unit Down 31 1/2" .8M

STANDARD COLORS

Opaque Blue/Grey
 Opaque Brown/Taupe
 Opaque Crimson/White

OPTIONAL COLORS (at extra charge)

Metallflake Blue/Blue
 Metallflake Brown/Taupe
 Metallflake Black/Grey
 Metallflake Silver/Grey
 Metallflake Red/White

SSV-177

STANDARD FEATURES:

Deluxe lockable glove box
 Map pouch on motor cover
 In-floor ski locker with teak lid
 Stainless steel bow and stern rails
 Built-in fuel tank
 Storage compartment under bow seats and Sun deck lids
 Soft top storage under sun deck lids
 Command console with:
 Speedometer, tachometer, electric fuel gauge, oil pressure gauge, engine temperature gauge, switches for bilge pump, blower, horn, and lights
 Deluxe sport steering wheel
 Stainless steel boarding ladder
 Interior light
 Carpeted storage areas
 Concealed electric horn
 Hand-laid fiberglass construction
 Drinkholder: including stepped design which accommodates foam-insulated-type drinkholder.

Ice chest under bow seat
 Side storage trays
 Walk-thru tempered glass windshield
 Easy-up soft top with boot cover
 Running lights with removable stern light
 Two back-to-back three-position lounge seats
 Two stern seats
 Chrome-plated hardware
 Plush carpet
 Teak step pads
 In-handle trim control
 B.I.A. certified

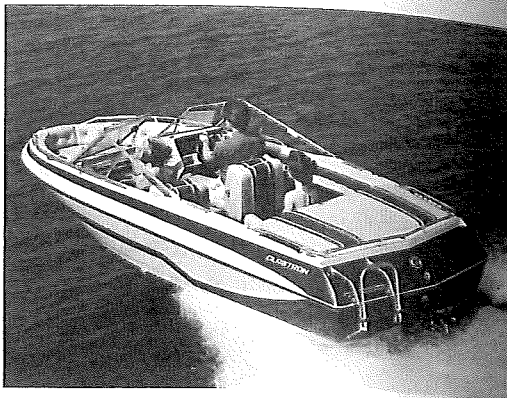
OPTIONS:

Side and aft curtains
 Tonneau cover
 Custom mooring cover
 Mercruiser or O.M.C. control and trim gauge
 Stainless steel steering wheel

ENGINE OPTIONS:

140 Mercruiser
 170 Mercruiser
 185 Mercruiser
 190 Mercruiser
 140 O.M.C.
 170 O.M.C.

SX-180



SPECIFICATIONS

LOA 17'6-3/8" 5.35M
 Beam 84-1/8" 2.1M
 Depth 42" 1.06M
 Maximum Depth 56" 1.42M
 Stor. Capacity 12.3 c.f. .35 cu.m.
 LOA on Trailer 20'8 3/4" 6.32M
 Steering Mechanical
 Max. Load 900 lbs. 408 kg.
 Max. Persons Load 6 or 900 lbs. 408 kg.
 Trailer GS-18 SG-18
 Draft: A. Drive Unit Up 12 3/4" .32M
 B. Drive Unit Down 31 1/4" .79M

Approximate Weight 1200 lbs. 544 kg.
 Ice Box Capacity .67 c.f. 20 qts. 19 l.
 Transom Width 79" 2.0M
 Max. Horsepower N/A
 Motor Shaft Length N/A
 Cockpit Depth 27 1/4" .69M
 Boat Ht. on Trailer 72" 1.83M
 Fuel Capacity 23 gallons

COLORS

Opaque Crimson/Taupe
 Opaque Brown/Taupe
 Opaque Blue/Grey
 *Metalflake Blue/Blue

*Special Color Charge

SX-180

STANDARD FEATURES:

In-floor ski locker with teak lid
 Stainless steel bow and stern rails
 Deluxe sport steering wheel
 Built-in fuel tank
 Aft sun lounge
 Two folding lounge bucket seats
 Deluxe instrument panel with:
 Speedometer, tachometer, electric fuel gauge, trim gauge, oil pressure gauge, engine temperature gauge, voltmeter, and switches for bilge pump, blower, horn and lights
 Built-in foot rest under console
 Deluxe lockable glove box
 Carpeted storage areas
 Walk-thru curtain
 Hand-laid fiberglass construction
 Removable Igloo ice chest
 Side storage trays
 Drinkholder: including stepped design which accommodates foam-insulated-type drinkholder.

Walk-thru tempered glass windshield
 Running lights with removable stern light
 Bilge pump, bilge blower
 Cockpit courtesy lights
 In-handle trim control
 Easy-up soft top with boot cover
 Chrome-plated hardware
 Plush carpet
 Concealed electric horn
 Teak step pads
 B.I.A. certified
 Stainless steel boarding ladder

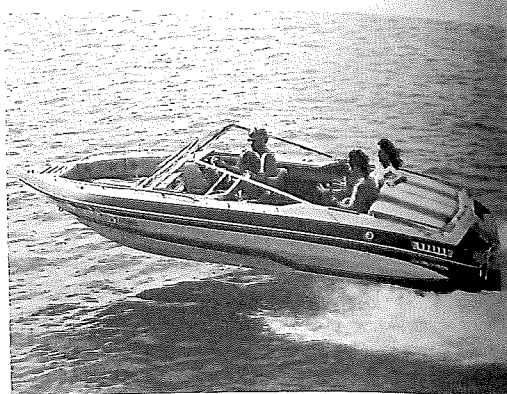
OPTIONS:

Side and stern curtains
 Custom mooring cover
 Tonneau bow cover
 Mercruiser or O.M.C. control
 Stainless steel steering wheel

ENGINE OPTIONS:

170 Mercruiser
 185 Mercruiser
 190 Mercruiser
 200 Mercruiser
 205 Mercruiser
 230 Mercruiser
 260 Mercruiser
 170 O.M.C.
 260 O.M.C.

SX-190



SPECIFICATIONS

LOA 18' 8" 5.7M Approximate Weight 1250 lbs. 567 kg.
 Beam 88¼" 2.24M Ice Box Capacity 1.2 c.f. 35 qt. 33 l.
 Depth 42-1/8" 1.1M Transom Width 85½" 2.17M
 Maximum Depth 57½" 1.5M Max. Horsepower N/A
 Stor. Capacity 19.4 c.f. .6 cu.m. Motor Shaft Length N/A
 LOA on Trailer 23' 0" 7M Cockpit Depth 29¾" .8M
 Steering Power Steering (Where Applicable)
 Boat Ht. on Trailer 71" 1.8M Fuel Capacity 33 gal.
 Max. Load 1200 lbs. 644 kg. Max. Persons Load 8 or 1100 lbs. 499 kg.
 Trailer GS-19 SG-19 Draft: A. Drive Unit Up 19" .5M
 B. Drive Unit Down 36½" .9M

STANDARD COLORS

Opaque Blue/Grey
 Opaque Brown/Taupe
 Opaque Crimson/White
 Opaque Crimson/Taupe

OPTIONAL COLORS (at extra charge)

Metallflake Blue/Blue
 Metallflake Brown/Taupe
 Metallflake Black/Grey
 Metallflake Silver/Grey
 Metallflake Red/White

SX-190

STANDARD FEATURES:

Sony AM/FM stereo cassette player—6 watts per channel output
 Four 20 WATT Sony Coaxial speakers
 Electric power antenna
 Sun lounge
 Motor cover lids with gas cylinder lifting mechanism and concealed latch releases
 Stainless steel bow rails
 Teak taft rails
 In-floor ski locker with teak lid
 Bow eye and ski eye
 Stainless steel stern boarding ladder
 Built-in fuel tank
 Soft top storage under sun lounge
 Deluxe instrument panel with:
 Speedometer, tachometer, electric fuel gauge, trim gauge, oil pressure gauge, engine temperature gauge, voltmeter, and switches for bilge pump, blower, horn and lights
 Deluxe sport steering wheel
 Engine compartment lighting
 Ice chest under bench seat
 Deluxe lockable glove box
 Storage under bow seats, bench seats and sun lounge
 Built-in foot rest under consoles
 Molded-in swim platforms with teak step pads
 Carpeted storage areas
 Walk-thru curtain
 Drinkholder: including stepped design which accommodates foam-insulated-type drinkholder.

Hand-laid fiberglass construction
 Chrome-plated hardware
 Plush carpet
 Soft top system with boot cover
 Running lights with removable stern light
 Rack and pinion steering
 Walk-thru tempered glass windshield
 Open bow with cushioned seating
 Bench and bucket seating
 Aft sun lounge
 B.I.A. certified
 Teak step pads
 In-handle trim control
 Cockpit courtesy lights
 Ice chest in floor
 Concealed electric horn
 Ashtrays port and starboard
 Cigarette lighter and map light
 Slide mechanism on helmsman seat

OPTIONS:

Side and aft curtains
 Tonneau cover
 Custom mooring cover
 Mercruiser or O.M.C. control
 Stainless steel steering wheel

FACTORY OPTIONS:

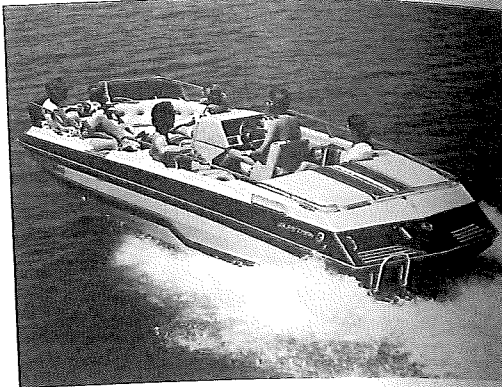
Digital Dash instruments
 for V-8 engines only

ENGINE OPTIONS:

170 Mercruiser
 185 Mercruiser
 190 Mercruiser
 200 Mercruiser
 205 Mercruiser
 230 Mercruiser
 260 Mercruiser*
 170 O.M.C.
 260 O.M.C.*

*Stainless steel prop standard

SV-191



SPECIFICATIONS

LOA 19'3" 5.87M Approximate Weight 1750 lbs. 749 kg.
 Beam 95 1/4" 2.43M Ice Box Capacity 1.7 c.f. 52 qts. 49 l.
 Depth 37 1/4" .96M Transom Width 89 1/2" 2.27M
 Maximum Depth 53 3/4" 1.37M Max. Horsepower N/A
 Stor. Capacity 35.4 c.f. 1.0 cu.m. Motor Shaft Length N/A
 LOA on Trailer 21'06" 6.55M Cockpit Depth 26" .7M
 Steering Power Steering (Where Applicable)
 Boat Ht. on Trailer 75" 1.9M
 Max. Load 1600 lbs. 726 kg. Fuel Capacity 33 gallons
 Max. Persons Load 12 or 1600 lbs. 726 kg.
 Trailer SS-19 Draft: A. Drive Unit Up 17" .4M
 B. Drive Unit Down 34 1/2" .9M

STANDARD COLORS

Opaque Blue/Grey
 Opaque Crimson/Taupe
 Opaque Brown/Taupe

OPTIONAL COLORS (at extra charge)

Metallflake Blue/Blue
 Metallflake Brown/Taupe

SV-191

STANDARD FEATURES:

- Sony AM/FM stereo cassette player—6 watts per channel output
- Four 20 WATT Sony Coaxial speakers
- Electric power antenna
- Motor cover lids with gas cylinder lifting mechanism and concealed latch releases
- "U" shaped lounge seat
- Driver swivel bucket seat
- In-floor ski storage with teak lid
- Deluxe instrument panel with:
 - Speedometer, tachometer, electric fuel gauge, trim gauge, oil pressure gauge, engine temperature gauge, voltmeter, and switches for bilge pump, blower horn, and lights
- Bow eye and ski eye
- Storage under bowseats, lounge seats and sun lounge
- Deluxe lockable glove box
- Stainless steel boarding ladder
- Venturi windshield
- Stainless steel bow and stern rails
- Deluxe sport steering wheel
- Interior lights
- Engine compartment lighting
- Concealed electric horn
- Drinkholder: including stepped design which accommodates foam-insulated-type drinkholder.

- Built-in foot rest under console
- Built-in fuel tank
- Carpeted storage areas
- Upholstered lockable port side console with storage area underneath
- Hand-laid fiberglass construction releases
- Aft sun lounge
- Cushioned bow area
- Entertainment console
- Built-in insulated ice chest
- Bilge pump and blower
- Positive foam flotation
- B.I.A. certified
- Easy bow access
- Teak step pad
- Running lights with removable stern light
- Slide mechanism on helmsman seat

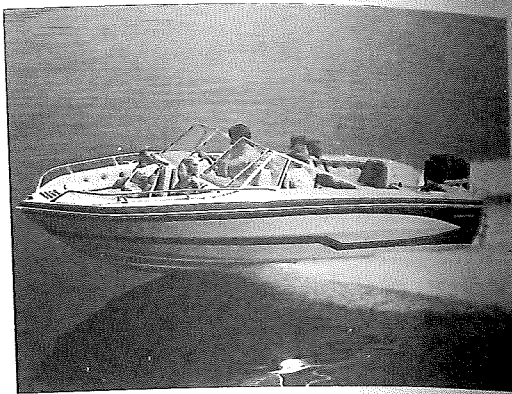
OPTIONS:

- Soft top and boot cover
- Console windshield
- Side and stern curtains
- Camper canvas
- Portable head
- Cocktail table
- Forward sun lounge cushions
- Mercuriser or O.M.C. control
- Stainless steel steering wheel

ENGINE OPTIONS:

- 140 Mercuriser
- 170 Mercuriser
- 185 Mercuriser
- 190 Mercuriser
- 200 Mercuriser
- 205 Mercuriser
- 230 Mercuriser
- 260 Mercuriser
- 140 O.M.C.
- 170 O.M.C.
- 260 O.M.C.

V-192



SPECIFICATIONS

LOA 18'9" 5.7M	Approximate Weight 1330 lbs. 603 kg.
Beam 87" 2.2M	Ice Box Capacity .8 c.f. 25 qt. 24 l.
Depth 48½" 1.2M	Transom Width 83½" 2.1M
Maximum Depth 66" 1.7M	Max. Horsepower 185
Stor. Capacity 23.1 c.f. .7 cu.m.	Motor Shaft Length 25"
LOA on Trailer 22'0" 6.7M	Cockpit Depth 31" .8M
Steering Mechanical	Boat Ht. on Trailer 81" 2.1M
Max. Load 1850 lbs. 839 kg.	Fuel Capacity 33 gallons
Max. Persons Load 8 or 1020 lbs. 463 kg.	
Trailer G-19 SG-19	Draft: A. Drive Unit Up 14" .4M B. Drive Unit Down 31" .8M

STANDARD COLORS

Opaque Blue/Grey
Opaque Brown/Taupe
Opaque Crimson/White

OPTIONAL COLORS (at extra charge)

Metallflake Blue/Blue
Metallflake Black/Grey
Metallflake Silver/Grey
Metallflake Red/White

V-192

STANDARD FEATURES:

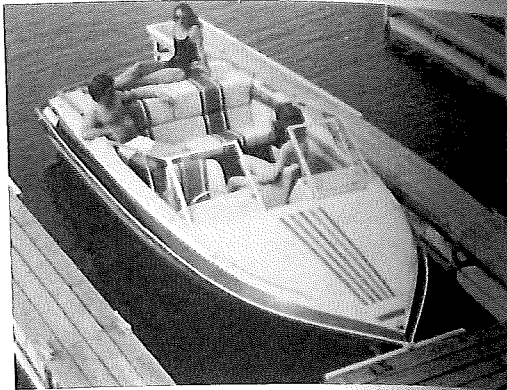
Stainless steel bow rails
Storage under bow seats and jump seats
Concealed electric horn
Deluxe lockable glove box
In-floor ski storage with teak lid
Deluxe sport steering wheel
Bow locker with teak door
Built-in fuel tank
Removable ice chest
Stainless steel boarding ladder
Soft top storage under stern seats
Deluxe instrument panel with:
Speedometer, tachometer, fuel gauge, voltmeter, hour meter and switches for bilge pump, horn and lights
Built-in foot rest under consoles
Carpeted storage areas
Walk-thru curtain
Hand-laid fiberglass construction
Drinkholder: including stepped design which accommodates foam-insulated-type drinkholder.

Wrap-around bow seats, back rests, and bolsters
Table with drinkholders between stern seats
Running lights with removable stern light
Plush carpet
Stainless steel bow eye and ski eyes
Level flotation
Bilge pump
Two back-to-back three-position lounge seats
Table locker with hinged door
Walk-thru tempered glass windshield
Easy-up soft top system with boot cover
Two stern seats
Side tray storage
Chrome-plated hardware
Teak step pads
Rack and pinion steering
Cockpit courtesy lights
B.I.A. certified

OPTIONS:

Side and stern curtains
Tonneau bow cover
Custom mooring cover
Dual cable steering
Stainless steel steering wheel

SSV-194



SPECIFICATIONS

LOA 18'8" 5.7M Approximate Weight 1230 lbs. 558 kg.
 Beam 88¼" 2.24M Ice Box Capacity 1.2 c.f. 35 qt. 33 l.
 Depth 42-1/8" 1.1M Transom Width 85½" 2.17M
 Maximum Depth 57½" 1.5M Max. Horsepower N/A
 Stor. Capacity 15.9 c.f. .45 cu.m. Motor Shaft Length N/A
 LOA on Trailer 23'0" 7.0M Cockpit Depth 29¾" .8M
 Steering Power Steering (Where Applicable)
 Boat Ht. on Trailer 71" 1.8M
 Max. Load 1200 lbs. 544 kg. Fuel Capacity 33 gallons
 Max. Persons Load 8 or 1100 lbs. 499 kg.
 Trailer GS-19 SG-19 Draft: A. Drive Unit Up 19" .5M
 B. Drive Unit Down 36¼" .9M

STANDARD COLORS

Opaque Blue/Grey
 Opaque Crimson/Taupe

OPTIONAL COLORS (at extra charge)

Metalflake Blue/Blue

SSV-194

STANDARD FEATURES:

Motor cover lids with gas cylinder lifting mechanism and concealed latch releases
 Sun lounge
 Stainless steel bow rails
 Teak tuff rails
 In-floor ski locker with teak lid
 Bow eye and ski eye
 Stainless steel stern boarding ladder
 Built-in fuel tank
 Soft-top storage under sun lounge
 Deluxe instrument panel with:
 Speedometer, tachometer, electric fuel gauge, trim gauge, oil pressure gauge, engine temperature gauge, voltmeter, and switches for bilge pump, blower, horn and lights
 Deluxe sport steering wheel
 Engine compartment lighting
 Ice chest under bench seat
 Deluxe lockable glove box
 Three bow storage areas
 Drinkholder: including stepped design which accommodates foam-insulated-type drinkholder.

Molded-in swim platforms with teak step pads
 Carpeted storage areas
 Hand-laid fiberglass construction
 Port convenience strap
 Chrome-plated hardware
 Plush carpet
 Teak step pads
 In-handle trim control
 Cockpit courtesy light
 Ashtrays port and starboard
 Cigarette lighter or map light
 Concealed electric horn
 Soft top system with boot cover
 Bench and bucket seating
 Slide mechanism on helmsman seat

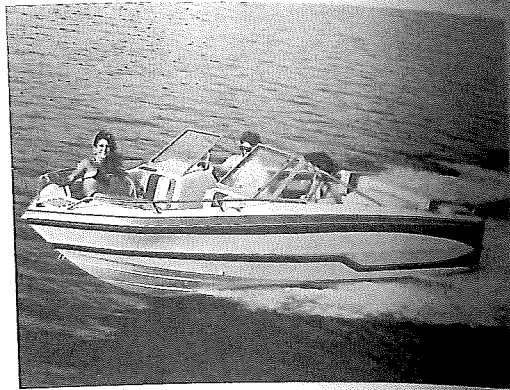
OPTIONS:

Side and aft curtains
 Custom mooring cover
 Mercruiser or O.M.C. control
 Stainless steel steering wheel

ENGINE OPTIONS:

170 Mercruiser
 185 Mercruiser
 190 Mercruiser
 200 Mercruiser
 205 Mercruiser
 230 Mercruiser
 260 Mercruiser
 170 O.M.C.
 260 O.M.C.

V-195



SPECIFICATIONS

LOA 18' 10½" 5.7M Approximate Weight 1360 lbs. 617 kg
Beam 87" 2.2M Ice Box Capacity 1.3 c.f. 39 qt. 37 l.
Depth 48½" 1.2M Transom Width 83½" 2.1M
Maximum Depth 65¼" 1.6M Max. Horsepower N/A
Stor. Capacity 20.0 c.f. .57 cu.m. Motor Shaft Length N/A
LOA on Trailer 22' 0¼" 6.71M Cockpit Depth 31¼" .79M
Steering Power Steering (Where Applicable)
Boat Ht. on Trailer 80" 2.03M Fuel Capacity 33 gallons
Max. Load 1200 lbs. 544 kg. Max. Persons Load 8 or 1200 lbs. 544 kg.
Trailer GS-19 SG-19 Draft: A. Drive Unit Up 13¼" .34M
B. Drive Unit Down 36¼" .78M

STANDARD COLORS

Opaque Blue/Grey
Opaque Brown/Taupe
Opaque Crimson/White

OPTIONAL COLORS (at extra charge)

Metallflake Blue/Blue
Metallflake Brown/Taupe
Metallflake Black/Grey
Metallflake Silver/Grey
Metallflake Red/White

V-195

STANDARD FEATURES:

Deluxe lockable glove box
Built-in fuel tank
Cushioned bow seating with lean-backs
Bow storage compartment with teak door
Deluxe sport steering wheel
Sun lounge
Stainless steel rails
Soft top storage under sun lounge
Stainless steel boarding ladder
In-floor ski locker with teak lid
Built-in foot rest under consoles
Concealed electric horn
Deluxe instrument panel with:
Speedometer, tachometer, electric fuel gauge, trim gauge, oil pressure gauge, engine temperature gauge, voltmeter, and switches for bilge pump, blower, horn and lights
Bow eye and ski eye
Carpeted storage areas
Walk-thru curtain
Drinkholder, including stepped design which accommodates foam-insulated-type drinkholder.

Two fold-out lounge seats
Power steering (where applicable)
Aft jump seats
Chrome plated hardware
Ice chest under bow seat
Plush carpet
Teak step pads
Cockpit courtesy lights
Side storage trays
Hand-laid fiberglass construction
Soft top system with boot cover
In-handle trim control
Positive foam flotation
B.I.A. certified

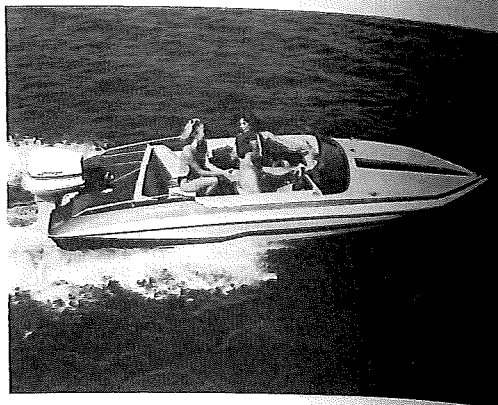
OPTIONS

Side and stern curtains
Tonneau bow cover
Custom mooring cover
Mercuriser or O.M.C. control
Stainless steel steering wheel

ENGINE OPTIONS:

185 Mercuriser
190 Mercuriser
200 Mercuriser
205 Mercuriser
230 Mercuriser
260 Mercuriser
170 O.M.C.
260 O.M.C.

CVX-16



SPECIFICATIONS

LOA 16'8" 5.1M	Approximate Weight 720 lbs. 327 kg
Beam 78½" 2.0M	Ice Box Capacity 1.1 c.f. 34 qt. 32 l
Depth 32" .81M	Transom Width 77" 1.9M
Maximum Depth 40" 1.0M	Max. Horsepower 125
Stor. Capacity 17.8 c.f. .5 cu.m.	Motor Shaft Length 20"
LOA on Trailer 19' 1¼" 5.8M	Cockpit Depth 26¼" 7M
Steering Mechanical	Boat Ht. on Trailer 55" 1.4M
Max. Load 1200 lbs. 562 kg.	Fuel Capacity 18 gallons
Max. Persons Load 5 or 750 lbs. 340 kg.	
Trailer CA-16 SC-16	Draft: A. Drive Unit Up 10½" 3M
	B. Drive Unit Down 28" 7M

COLORS

Metalflake Blue/Blue
 Metalflake Black/Grey
 Metalflake Silver/Grey
 Metalflake Red/White

CVX-16

STANDARD FEATURES:

Built-in ice chest
 Bow storage compartment
 Instrument panel with:
 Tachometer, speedometer,
 fuel gauge
 Stainless steel boarding
 ladder
 Stainless steel stern rails
 Carpeted storage areas
 Storage under splashwell
 Hand-laid fiberglass
 construction
 Two foam-padded bucket
 seats, port seat swivels
 Padded stern bench seat with
 ice chest and storage
 beneath
 Drinkholder, including
 stepped design
 which accommodates
 foam-insulated-type
 drinkholder.

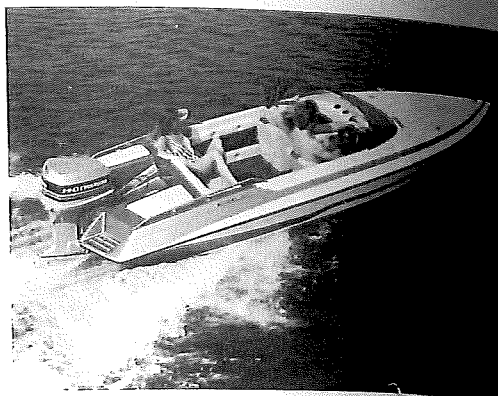
Side tray storage
 Storage tray built into dash
 Level flotation
 Custom sport wheel
 Built-in fuel tank
 Stainless steel bow eye and
 ski eyes
 Running lights with
 removable stern light
 Level foam flotation
 Plush carpet
 Concealed electric horn
 Contoured tinted plexiglass
 windscreen
 Bow ski locker
 Lockable glove box
 B.I.A. certified

OPTIONS:

Custom mooring cover
 Ski tow bar

5/8 Floor

CVX-17



SPECIFICATIONS

LOA 17' 7" 5.4M	Approximate Weight 875 lbs. 397 kg.
Beam 78" 2.0M	Ice Box Capacity 1.7 c.f. 51 qt. 48 l.
Depth 34 1/2" .81M	Transom Width 77" 1.9M
Maximum Depth 40 1/4" 1.02M	Max. Horsepower 140
Stor. Capacity 19.5 c.f. .55 cu.m.	Motor Shaft Length 20"
LOA on Trailer 20' 6" 6.25M	Cockpit Depth 26 1/2" .67M
Steering Mechanical	Boat Ht. on Trailer 55" 1.4M
Max. Load 1245 lbs. 565 kg.	Fuel Capacity 18 gallons
Max. Persons Load 5 or 750 lbs. 340 kg.	
Trailer CA-17 SC-17	Draft: A. Drive Unit Up 10 3/4" .27M
	B. Drive Unit Down 25 1/4" .72M

COLORS

Metalflake Blue/Blue
 Metalflake Black/Grey
 Metalflake Silver/Grey
 Metalflake Red/White

CVX-17

STANDARD FEATURES:

- Two stern ice chests with padded covers
- Bow storage compartment
- Stainless steel stern rails
- Level flotation
- Stainless steel boarding ladder
- Storage under splashwell
- Side tray storage
- Hand-laid fiberglass construction
- Two foam-padded bucket seats, port seat swivels
- Padded stern bench seat with storage beneath
- Plush carpet
- Built-in ski storage
- Drinkholder including stepped design which accommodates foam-insulated-type drinkholder.

- Contoured tinted plexiglass windscreen
- Chrome-plated hardware
- Concealed electric horn
- Built-in fuel tank
- Running lights with removable stern light
- Custom instrumentation: Speedometer, electric fuel gauge, tachometer
- Grab bar
- Custom sport wheel
- Stainless steel bow eye and ski eyes
- Lockable glove box
- B.I.A. certified

OPTIONS:

- Custom mooring cover
- Ski tow bar

SKI MACHINE



SPECIFICATIONS

LOA 20' 3" 6.3M	Approximate Weight 1050 lbs. 477 kg.
Beam 90 1/4" 2.2M	Ice Box Capacity .45 c.f. 13 qt. 12 l.
Depth 37" .9M	Transom Width 84 3/4" 2.2M
Maximum Depth 48" 1.22M	Max. Horsepower 200
Stor. Capacity 13.2 c.f. .37 cu.m.	Motor Shaft Length 20"
LOA on Trailer 21' 9 1/2" 6.64M	Cockpit Depth 26" .66M
Steering Dual Cable	Boat Ht. on Trailer 63" 1.6M
Max. Load 1515 lbs. 689 kg.	Fuel Capacity 27 gallons
Max. Persons Load 6 or 1025 lbs. 465 kg.	
Trailer C-20	Draft: A. Drive Unit Up 12 1/2" .32M
	B. Drive Unit Down 30" .76M

COLORS

Metallflake Blue/Blue
 Metallflake Black/Grey
 Metallflake Silver/Grey
 Metallflake Red/White

SKI MACHINE

STANDARD FEATURES:

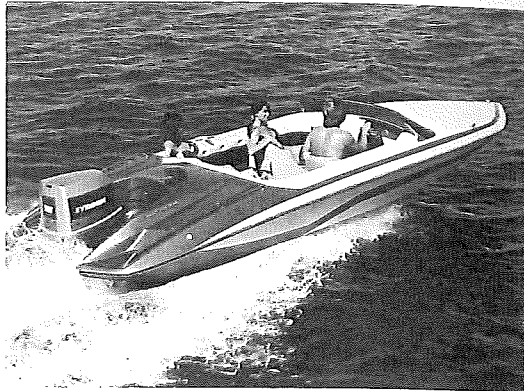
Driver swivel bucket seat
 Stainless steel stern rails
 Positive foam flotation
 Molded-in swim platforms
 Stainless steel tournament mirror
 Stainless steel boarding ladder
 Starboard bow storage locker
 Carpeted storage areas
 Concealed electric horn
 Hand-laid construction
 Two-person stern facing observer bench and twin rear jump seats with storage beneath
 Contoured tinted plexiglass windscreen
 Chrome-plated hardware
 Plush carpet
 Slide mechanism on helmsman seat
 Drinkholder: including stepped design which accommodates foam-insulated-type drinkholder.

Custom sport wheel
 Special Tournament instrumentation with:
 Dual speedometers, electric fuel gauge and tachometer
 Built-in fuel tank
 Stainless steel bow eye and ski eyes
 Fastback transom with teak boarding steps, grab rails
 Running lights with removable stern light
 Dual cable steering
 Large ski locker
 Lockable glove box
 Twin position ski tow pylon
 B.I.A. certified
 Ice chest under observer seat
 Forward storage pocket
 Special accent graphics

OPTIONS:

Custom mooring cover

CVX-20 SPRINT



SPECIFICATIONS

LOA 20'3" 6.17M Approximate Weight 1050 lbs. 476 kg.
 Beam 90¼" 2.29M Ice Box Capacity .6 c.f. 18 qt. 17 l.
 Depth 37" .94M Transom Width 84¾" 2.15M
 Maximum Depth 48" 1.22M Max. Horsepower 200
 Stor. Capacity 35.8 c.f. 1.01 cu.m. Motor Shaft Length 20"
 LOA on Trailer 21'9½" 6.64M Cockpit Depth 26" .66M
 Steering Dual Cable Mechanical
 Boat Ht. on Trailer 63" 1.6M
 Max. Load 1515 lbs. 687 kg. Fuel Capacity 27 gallons
 Max. Persons Load 6 or 1025 lbs. 465 kg.
 Trailer C-20 Draft: A. Drive Unit Up 12½" .32M
 B. Drive Unit Down 30" .76M

COLORS

Metalflake Blue/Blue
 Metalflake Black/Grey
 Metalflake Silver/Grey
 Metalflake Red/White

CVX-20 SPRINT

STANDARD FEATURES:

Two bow storage covers
 Stainless steel stern rails
 Instrument panel with:
 Speedometer, tachometer,
 fuel gauge and switches
 for bilge pump, horn, and
 lights
 Deluxe grab bar
 Custom sport wheel
 Positive foam flotation
 Stainless steel boarding
 ladder
 Carpet storage areas
 Concealed electric horn
 Smoked custom plexiglass
 windshield
 Running lights
 Bow cleats
 Built-in ski storage
 Drinkholder: including
 stepped design
 which accommodates
 foam-insulated-type
 drinkholder.

Forward bucket seats swivel
 Full width wrap-around rear
 seat
 Slide mechanism on
 helmsman seat
 Deluxe center console with
 lockable storage
 Courtesy light
 Teak trim and boarding steps
 Plush pile carpet
 Bilge pump
 Deluxe side trays
 Built-in fuel tank

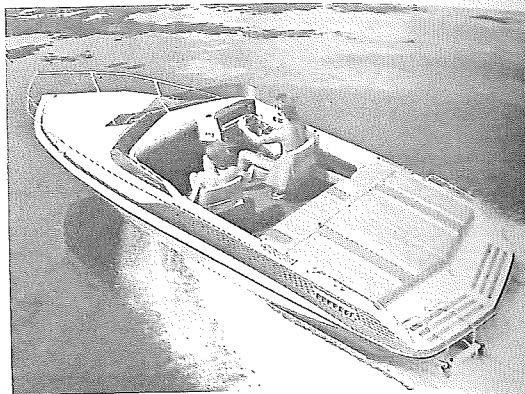
OPTIONS:

Custom mooring cover

FACTORY OPTIONS:

Removable custom ski tow

CV-23



SPECIFICATIONS

LOA 23'4 3/4" 7.1M Approximate Weight 1400 lbs. 636 kg.
 Beam 91 1/2" 2.3M Ice Box Capacity 1.6 c.f. 48 qt. 45 l.
 Depth 50" 1.3M Transom Width 85" 2.2M
 Maximum Depth 58 3/4" 1.5M Max. Horsepower N/A
 Stor. Capacity 14.1 c.f. .4 cu.m. Motor Shaft Length N/A
 LOA on Trailer 26'2 1/2" 8.0M Cockpit Depth 32 3/4" .8M
 Steering Power Steering Boat Ht. on Trailer 74 1/4"
 Max. Load 1200 lbs. 544 kg. Fuel Capacity 50 gallons
 Max. Persons Load 8 or 1200 lbs. 544 kg.
 Trailer C-23 Draft: A. Drive Unit Up 12 1/4" .3M
 B. Drive Unit Down 29 3/4" .8M

COLORS

Metalflake Blue/Blue
 Metalflake Brown/Taupe
 Metalflake Silver/Grey
 Metalflake Red/White

CV-23

STANDARD FEATURES:

Lockable glove box
 Sony AM/FM stereo cassette player—6 watts per channel output
 Four 20 WATT Sony coaxial speakers
 Electric power antenna
 Stainless steel boarding ladder
 Molded-in swim platform with teak step pads
 Cabin privacy curtain
 Cabin seating converts to full sleep area
 Bilge blower
 Carpeted storage areas
 Engine compartment lighting
 Hand-laid fiberglass construction
 Padded stern sun lounge with deep storage beneath
 Padded side storage trays
 Smoked plexiglass windscreen
 Stainless steel bow and stern rails
 Plush carpet
 Power steering
 Foam flotation
 Motor cover lids with gas cylinder lifting mechanism and concealed latch releases
 Drinkholder: including stepped design which accommodates foam-insulated-type drinkholder.

Custom Instrumentation with:
 Speedometer, tachometer, electric fuel gauge, oil pressure gauge, engine temperature gauge, voltmeter
 Built-in fuel tank
 Spacious daycruiser cabin
 Inside latching tinted plexiglass hatch to bow
 Running lights with removable stern light
 Two deep foam-padded swivel bucket seats
 Removable ice chest stores under stern sun lounge
 Padded stern bench with ski storage beneath
 Teak step pads
 Automatic bilge pump
 Cockpit courtesy light
 Bow eye and ski eyes
 Stainless steel prop
 B.I.A. certified
 Deluxe sport steering wheel
 Slide mechanism on helmsman seat

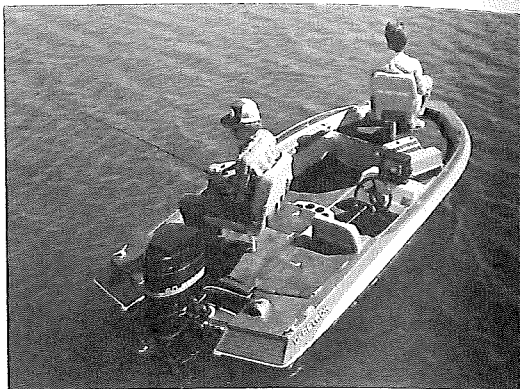
OPTIONS:

Enclosure canvas
 Custom mooring cover
 Mercruiser or O.M.C. control & trim gauge
 Stainless steel steering wheel

ENGINE OPTIONS:

260 Mercruiser
 260 O.M.C.

HPV-155



SPECIFICATIONS

LOA 15'5" 4.7M Approximate Weight 750 lbs. 340 kg.
Beam 76-1/8" 1.97M Ice Box Capacity 2.1 c.f. 63 qt. 59 l.
Depth 30" 76M Transom Width 73-5/8" 1.89M
Maximum Depth 48" 1.22M Max. Horsepower 90
Stor. Capacity 17.3 c.f. .49 cu.m. Motor Shaft Length 20"
LOA on Trailer 18'2 3/4" 5.56M Cockpit Depth 20" .51M
Steering Mechanical Boat Ht. on Trailer 62 3/4" 1.59M
Max. Load 890 lbs. 526 kg. Fuel Capacity N/A
Max. Persons Load 3 or 300 lbs. 136 kg.
Trailer GA-15, SG-15

Draft: A. Drive Unit Up 10 1/4" .26M
B. Drive Unit Down 27 3/4" .7M

COLORS

Metallflake Blue/Blue
Metallflake Black/Grey
Metallflake Silver/Grey
Metallflake Red/White

HPV-155

STANDARD FEATURES:

Forward and aft livewells
Rod storage with keyed flushlock
Lockable bow storage under bow platform
Fold-down driver and passenger seats
Storage under aft platform
Deluxe steering wheel
Carpeted storage areas
Circulating livewell
Heavy-duty livewell hose
Hand-laid fiberglass construction
Two removable spring mounted 360° swiveling fishing seats
Seat extension storage
Electric horn
Stainless steel bow rails
Drinkholder: including stepped design which accommodates foam-insulated-type drinkholder.

Elevated casting platforms fore and aft
Reinforced foredeck for mounting electric trolling motor
Running lights with removable stern light
Prewired bow panel for trolling motor
Bilge pump
Level flotation
B.I.A. certified
Speedometer

OPTIONS:

Stern boarding ladder
Tinted plexiglass sleek windscreen
Custom mooring cover
Pole seat casting chair
Power pedestal

T-161



SPECIFICATIONS

LOA 15' 8 1/4" 4.78	Approximate Weight 725 lbs. 329 kg.
Beam 74 1/4" 1.89M	Ice Box Capacity .8 c.f. 24 qt. 23 l.
Depth 36 1/4" .92M	Transom Width 71" 1.8M
Maximum Depth 52 1/2" 1.3M	Max. Horsepower 90
Stor. Capacity 18.0 c.f. .5 cu.m.	Motor Shaft Length 20"
LOA on Trailer 18' 9 1/4" 5.7M	Cockpit Depth 25 1/4" .6M
Steering Mechanical	Boat Ht. on Trailer 67 1/2" 1.7M
Max. Load 1330 lbs. 603 kg.	Fuel Capacity N/A
Max. Persons Load 6 or 775 lbs. 352 kg.	
Trailer TA-16, ST-16	Draft: A. Drive Unit Up 10 3/4" .3M
	B. Drive Unit Down 28 1/4" .7M

COLOR

Opaque Brown/Taupe

T-161

STANDARD FEATURES:

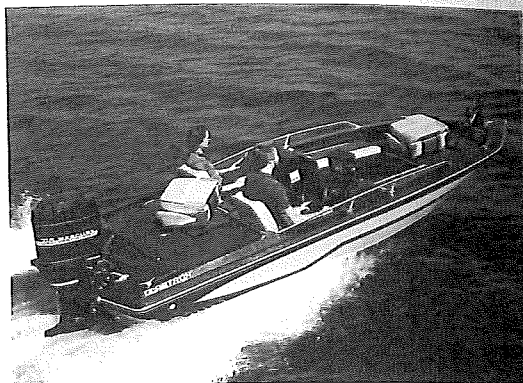
Three removable spring mounted seats
Fuel tank compartment with carpeted access lid
Elevated bow casting platform, hinged, with baitwell, ice chest and storage beneath
Anodized aluminum bow and stern rails
Concealed electric horn
Carpeted storage areas
Walk-thru curtain
Hand-laid fiberglass construction
Bow and stern sockets for relocation of seats

Two rear jumpseats with baitwell and storage beneath
Lockable glove box
In-floor ski and rod storage
Walk-thru tempered glass windshield
Soft top and boot cover
Stainless steel bow eye and ski eyes
Side mounted rod holders
Level foam flotation
B.I.A. certified

OPTIONS:

Stern boarding ladder
Side and stern curtains
Tonneau bow cover
Custom mooring cover

HPV-165



SPECIFICATIONS

LOA 16' 2 $\frac{1}{4}$ " 5.0M Approximate Weight 950 lbs. 431 kg.
Beam 79 $\frac{1}{4}$ " 2.0M Ice Box Capacity 1.6 c.f. 48 qt. 45 l.
Depth 33" .8M Transom Width 77 $\frac{1}{4}$ " 2.0M
Maximum Depth 48" 1.2M Max. Horsepower 120
Stor. Capacity 13.5 c.f. .38 cu.m. Motor Shaft Length 20"
LOA on Trailer 19' 0" 5.79M Cockpit Depth 19" .48M
Steering Mechanical Boat Ht. on Trailer 63" 1.6M
Max. Load 1150 lbs. 522 kg. Fuel Capacity 18 gallons
Max. Persons Load 5 or 610 lbs. 277 kg.
Trailer GA-16, SG-16 Draft: A. Drive Unit Up 11" .28M
B. Drive Unit Down 28 $\frac{3}{4}$ " .73M

COLORS

Metallflake Blue/Blue
Metallflake Black/Grey
Metallflake Silver/Grey
Metallflake Red/White

HPV-165

STANDARD FEATURES:

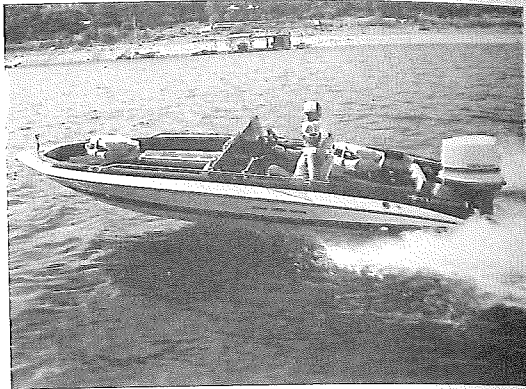
Lockable rod locker
Lockable in-floor ski locker
Carpeted storage areas
Forward and aft livewells
Carpeted bow locker lids with removable cushions and leanbacks
Stainless steel rails
Deluxe lockable glove box
Built-in fuel tank
Fold-down driver and passenger seats
Carpeted storage lockers
One level work area including bow casting platform and two adjoining storage lids
Remote livewell drain system for both livewells
Deluxe style fishing seats
Dry storage in two (2) bow lockers and in three (3) aft compartments
Automatic livewell aerator system
Stainless steel switch plate and bow panel plate
Heavy-duty livewell hose
Concealed electric horn
Hand-laid fiberglass construction
Bench seat between helm and passenger seats, carpeted storage below
Aft ice chest
Marine hardware, bow and ski eyes
Stern battery/storage compartment with removable storage trays
Seat extension storage
Drinkholder: including stepped design which accommodates foam-insulated-type drinkholder.

Running lights with removable stern light
Tachometer
Speedometer
B.I.A. certified
Two (2) folding removable spring mounted seats, swiveling 360°
Elevated casting platforms fore and aft, storage below
Reinforced foredeck for mounting trolling motor
Helm custom console:
Softgrip competition steering wheel, mechanical steering, electric fuel gauge, switches for livewell, pump, accessories, inland lighting
Custom bow panel:
Pre-wired trolling motor outlet with 12/24 volt switch, molded plug with two connections, engine tilt switch, volt gauge with battery test switch, charge switch, and courtesy light
Bilge pump
Level foam flotation

OPTIONS:

Tinted plexiglass
sleeve or upright
windscreens
Boarding ladder
Custom mooring cover
Pole seat casting chair
Power pedestal

HPV-170/175



SPECIFICATIONS

LOA 17'9½" 5.4M	Approximate Weight 1115 lbs. 507 kg.
Beam 91¼" 2.3M	Ice Box Capacity 1.6 c.f. 48 qt. 45 l.
Depth 35¾" .91M	Transom Width 90" 2.2M
Maximum Depth 51½" 1.31M	Max. Horsepower 185
Stor. Capacity 23.5 c.f. .67 cu.m.	Motor Shaft Length 22½"
LOA on Trailer 20'7¼" 6.28M	Cockpit Depth 20½" .52M
Steering Mechanical	Boat Ht. on Trailer 66½" 1.69M
Max. Load 1400 lbs. 635 kg.	Fuel Capacity 25 gallons
Max. Persons Load 7 or 900 lbs. 408 kg.	
Trailer H-17, SH-17	Draft: A. Drive Unit Up 11" .28M
	B. Drive Unit Down 28½" .72M

COLORS

Metallflake Blue/Blue
 Metallflake Black/Grey
 Metallflake Silver/Grey
 Metallflake Red/White

HPV-170/175

STANDARD FEATURES:

- In-floor lockable ski locker
- Two lockable rod/ski lockers with carpeted lids and removable cushions (cushions on 175 only)
- Stainless steel rails
- Remote livewell drain systems
- Fold-down driver and passenger seats
- Carpeted storage lockers
- Automatic livewell aerating system
- Stainless steel switch plate and bow panel plate
- Heavy-duty livewell hose
- Deluxe style fishing chairs
- Concealed electric horn
- Built-in fuel system
- Hand-laid fiberglass construction
- Two (2) folding removable spring mounted seats swivel 360° (2 position front seat mount)
- Bench seat between helmsman and passenger seats, carpeted storage below
- Elevated casting platform fore and aft, storage below
- Forward circulating livewell
- Aft—one circulating livewell and one ice chest
- Seat extension storage
- Dual cable steering
- Drinkholder: including stepped design which accommodates foam-insulated-type drinkholder.

- Reinforced foredeck for mounting trolling motor
- Helmsman custom console: Soft grip competition steering wheel, electric fuel gauge, tachometer, speedometer, switches for livewell pump, bilge pump, inland lighting and horn
- Bilge pump

- Custom bow panel: pre-wired trolling motor outlet with 12/24 volt switch, molded plug with two connections, engine tilt switch, volt gauge with battery test switch, charge switch, and courtesy light

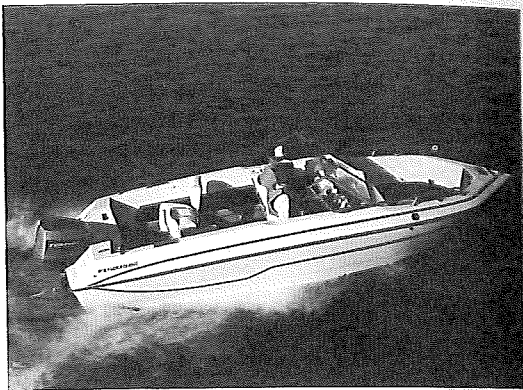
- Marine hardware, bow and ski eyes
- Stern battery/storage compartment

- Running lights with removable stern light
- Twin custom consoles with storage tray in passenger side (HPV-175 only)
- Level foam flotation
- B.I.A. certified

OPTIONS:

- Tinted plexiglass sleek or upright windscreens
- Stern boarding ladder
- Custom mooring cover
- Pole seat casting chair
- Upright aluminum framed windshield and soft top kit with walk-thru curtain
- Power pedestal

SSV-178



SPECIFICATIONS

LOA 17' 1/4" 5.0M	Approximate Weight 955 lbs. 430 kg.
Beam 83" 2.1M	Ice Box Capacity 1.3 c.f. 39 qt. 37 l.
Depth 46 3/4" 1.2M	Transom Width 79" 2.0M
Maximum Depth 59" 1.5M	Max. Horsepower 140
Stor. Capacity 19.2 c.f.	Motor Shaft Length 20"
LOA on Trailer 21' 09" 6.6M	Cockpit Depth 30" .8M
Steering Mechanical	Boat Ht. on Trailer 73" 1.9M
Max. Load 1550 lbs. 703 kg.	Fuel Capacity 18 gallons
Max. Persons Load 7 or 1050 lbs. 476 kg.	
Trailer G-17 SG-17	Draft: A. Drive Unit Up 10 1/2" .3M
	B. Drive Unit Down 28" .71M

COLOR

Opaque Blue /White

SSV-178

STANDARD FEATURES:

- Three removable swivel fishing seats fixed swivel drivers seat
- Bow fishing platform with seat location
- Three cockpit fishing seat locations
- Stainless steel rails
- Sport steering wheel
- Teak bow locker door
- Carpet storage areas
- Concealed electric horn
- Walk-thru curtain
- Opaque gelcoat
- Built-in 32 quart ice chest under bow seat
- Built-in fish/ice box in the stern floor area
- Built-in fuel tank
- Bilge pump (1,250 gallons per hour)
- Soft top with boot
- Reinforced bow area for mounting of trolling motor

- Reinforced deck area for mounting of rod holders and down riggers
- Electric fuel gauge
- Hand-laid fiberglass construction
- Walk-thru tempered glass windshield
- Chrome plated hardware
- Running lights with a removable stern light
- Stainless steel bow eye and ski eyes
- Side storage trays with rod holders
- Rack and pinion steering
- Glove box
- Level flotation
- B.I.A. certified

OPTIONS:

- Stern boarding ladder
- Side and stern curtains
- Custom mooring cover

V-216



SPECIFICATIONS

LOA 20'7" 6.3M	Approximate Weight 2030 lbs. 921 kg.
Beam 96" 2.4M	Ice Box Capacity 3.3 c.f. 99 qt. 93 l.
Depth 64 1/4" 1.6M	Transom Width 91 1/2" 2.3M
Maximum Depth 80 3/4" 2.1M	Max. Horsepower 220
Stor. Capacity 24.5 c.f. .7 cu.m.	
Motor Shaft Length Twin 20" Single 25"	
LOA on Trailer 23'9 3/4" 7.3M	Cockpit Depth 24" .6M
Steering Mechanical	Boat Ht. on Trailer 97 1/2" 2.5M
Max. Load 2280 lbs. 1034 kg.	Fuel Capacity 75 gallons
Max. Persons Load 10 or 1500 lbs. 680 kg.	
Trailer G-21	Draft: A. Drive Unit Up 19" .5M
	B. Drive Unit Down 46" 1.2M

COLOR

Opaque Blue/White

V-216

STANDARD FEATURES:

Carpeted storage areas
Electric horn
Padded seat forward of center cabin with storage beneath for soft top
Stainless Steel bow rail
Corrosion-resistant hardware
Enclosed center cabin with:
Cushioned vee berths and in-bulk-head cabinets, space for optional head, sliding cabin windows, folding cabin door with lockable hatch cover, ample storage
Self-bailing cockpit with fiberglass liner
Built-in fuel tank with electric gauge
Large in-floor fishwells/baitwells with fiberglass lids
Teak rod racks under gunwales
Removable splashwell transom board
Removable battery access panel in splashwell

Non-skid 14" walkway around center cabin
Hand-laid fiberglass construction
Tempered glass tinted windshield
High-volume bilge pump with automatic float switch
Non-skid deck and floor
Recessed rod holders
Custom instrument panel
Foam Flotation
Soft top with boot cover
Cabin lights
Two (2) helmsman chairs
Stainless steel steering wheel
Stainless steel bow and ski eyes
B.I.A. certified

OPTIONS:

Deluxe package:
speedometer and hour meter
Compass kit and windshield wiper (package)
Helm enclosure canvas
Portable head
Custom mooring cover

V-219



SPECIFICATIONS

LOA 20'7" 6.3M Approximate Weight 2030 lbs. 921 kg.
 Beam 96" 2.4M Ice Box Capacity 3.3 c.f. 99 qt. 93 l.
 Depth 64¼" 1.6M Transom Width 91¼" 2.3M
 Maximum Depth 80¾" 21.M Max. Horsepower N/A
 Stor. Capacity 20.6 c.f. .6 cu.m. Motor Shaft Length N/A
 LOA on Trailer 23'9¾" 7.3M Cockpit Depth 24" .6M
 Steering Power Steering (Where Applicable)
 Boat Ht. on Trailer 97½" 2.5M
 Max. Load 2280 lbs. 1034 kg. Fuel Capacity 75 gallons
 Max. Persons Load 14 or 2000 lbs. 907 kg.
 Trailer G-21 Draft: A. Drive Unit Up 20'¼" .5M
 B. Drive Unit Down 47¼" 1.2M

COLOR

Opaque Blue/White

V-219

STANDARD FEATURES:

Carpeted storage areas
 Electric horn
 Built-in fuel tank
 Hand-laid fiberglass construction
 Padded seat forward of center cabin with storage beneath for soft top
 Stainless steel bow rail
 Corrosion-resistant hardware
 Enclosed center cabin with:
 Cushioned vee berths and in-bulkhead cabinets, space for optional head, sliding cabin windows, folding cabin door with lockable hatch cover, ample storage
 Self-bailing cockpit with fiberglass liner
 Large in-floor fishwells/baitwells with fiberglass lids
 Teak rod racks under gunwales
 Non-skid 14" walkway around center cabin
 Non-skid deck and floor
 Tempered glass tinted windshield
 Recessed rod holders

High-volume bilge pump with automatic float switch
 Custom instrument panel
 Foam flotation
 Soft top with boot cover
 Cabin lights
 Stainless steel steering wheel
 Two (2) helmman chairs
 Stainless steel bow and ski eyes
 B.I.A. certified

OPTIONS:

Deluxe package:
 Speedometer, and hour meter
 Compass kit and windshield wiper (package)
 Helm enclosure canvas
 Portable head

ENGINE OPTIONS:

170 Mercruiser
 185 Mercruiser
 190 Mercruiser
 200 Mercruiser
 205 Mercruiser
 230 Mercruiser
 260 Mercruiser
 170 O.M.C.
 260 O.M.C.

V-232



SPECIFICATIONS

LOA 23'3/4" 7.11M	Ice Box Capacity .8 c.f. 25 qt. 24L
Beam 96" 2.4M	Transom Width 94 1/4" 2.4M
Depth 62 1/2" 1.6M	Maximum Horsepower N/A
Maximum Depth 81" 2.1M	Motor Shaft Length N/A
LOA on Trailer 27'9" 8.46M	Cockpit Depth 33 1/2" .85M
Steering Rack and Pinion	Fuel Capacity 87 gallons
Boat Height on Trailer 97 3/4" 2.48M	
Trailer G-23, SGT-23	

Draft: A. Drive Unit Up 23 1/2" .6M
 B. Drive Unit Down 40 1/2" 1.0M

COLOR

Opaque Blue/White

V-232

STANDARD FEATURES

Stainless steel sport wheel
 Carpeted storage areas
 Hand-laid fiberglass construction with integrated fiberglass stringers
 Custom molded dash with command instrumentation: speedometer, tachometer, electric fuel gauge, oil pressure gauge, engine temperature gauge, trim gauge, voltmeter and switches for bilge pump, blower, horn, lights and accessories
 Storage - cockpit side trays, under sleeper seats, and forward of bow cabin bulkhead
 Deep plush marine carpet
 Teak step pads
 Built-in aluminum fuel tank
 Inland lighting
 Automatic bilge pump
 In-handle trim control
 Bilge blower
 BIA certified
 Power steering
 Foam flotation
 Stainless steel bow rails
 Ski storage under aft lid
 Mercruiser or OMC control
 Stainless steel stern rail
 Rear bench seat/sun lounge with removable cushions on outboard sides for access aft
 Mechanical windshield with side vents
 Drinkholder: including stepped design which accommodates foam-insulated-type drinkholder.

Oversized smoked plexiglass hatch for easy bow access
 Soft top with boot cover
 Concealed soft top storage under aft lid
 Cabin lights
 Full width fiberglass swim platform with teakwood inserts and stainless steel boarding ladder
 Cockpit courtesy lights
 Bow eye and ski eyes
 Trumpet horns
 Lockable teak wood cabin doors
 Storage shelf under helm
 Portable head with hold-down assembly
 Seated headroom for five in cabin
 Two fold-down lounge seats with adjustable drivers seat
 Sleeping accommodations for five
 Removable Igloo ice chest, stows under bench seat

OPTIONS

Hydraulic levers
 Side and stern canvas
 Camper canvas

ENGINE OPTIONS

190 Mercruiser
 200 Mercruiser
 205 Mercruiser
 230 Mercruiser
 260 Mercruiser
 260 O.M.C.

V-233



SPECIFICATIONS

LOA 23'3 3/4" 7.11M
 Beam 96" 2.4M
 Depth 62 1/2" 1.6M
 Maximum Depth 81" 2.1M
 LOA on Trailer 27'9" 8.46M
 Steering Rack and Pinion
 Boat Height on Trailer 97 3/4" 2.48M
 Trailer G-23, SGT-23

Ice Box Capacity 8 c.f. 25 qt. 24l.
 Transom Width 94 1/4" 2.4M
 Maximum Horsepower N/A
 Motor Shaft Length N/A
 Cockpit Depth 33 1/2" .85M
 Fuel Capacity 87 gallons

Draft: A. Drive Unit Up 23 1/2" .6M
 B. Drive Unit Down 40 1/2" 1.0M

COLOR

Opaque Blue/White

V-233

STANDARD FEATURES

Sony AM/FM stereo cassette player - 6 watts per channel output
 Four 20 watt Sony coaxial speakers - two in cockpit and two in cabin
 Electric power antenna
 Stainless steel sport wheel
 Carpeted storage areas
 Hand-laid fiberglass construction with integrated fiberglass stringers
 Custom molded dash with speedometer, tachometer, electric fuel gauge, oil pressure gauge, engine temperature gauge, trim gauge, voltmeter and switches for bilge pump, blower, horn, lights, and accessories
 Storage - under cockpit floor with teakwood lid, under each of the three cabin cushions, under the helm, cabin side trays, under sleeper seat and forward of bow cabin bulkhead
 Deep plush marine carpet
 Teak step pads
 Built-in aluminum fuel tank
 Inland lighting
 Automatic bilge pump
 In-handle trim control
 Bilge blower
 BIA certified
 Power steering
 Foam flotation
 Stainless steel bow rails
 Ski storage under aft lid
 Mercruiser or OMC control
 Teak taff rail
 Rear bench seat/sun lounge
 removable cushions on out-board sides for access aft
 Welded frame windshield with side vents
 Drinkholder: including stepped design which accommodates foam-insulated-type drinkholder.

Oversized smoked plexiglass hatch for easy bow access
 Cabin side windows
 Soft top with boot cover
 Concealed soft top storage under aft lid
 Cabin lights
 Built-in cabinet with bottle and ice storage
 Full width fiberglass swim platform with teakwood inserts and stainless steel boarding ladder
 Cockpit courtesy lights
 Bow eye and ski eyes
 Trumpet horns
 Lockable teakwood cabin doors
 Portable head with hold-down assembly
 Seated headroom for five in cabin
 Cocktail table with mounting locations in cabin or cockpit
 Sleeping accommodations for four
 Port fold-down lounge seat and helmsman bucket with swivel and slide adjustment
 Built-in cockpit galley with ice box, water tank, slide-out alcohol stove, stainless steel sink, and electric water pump
 Removable Igloo ice chest, stows under bench seat
 Cigarette lighter and ash trays

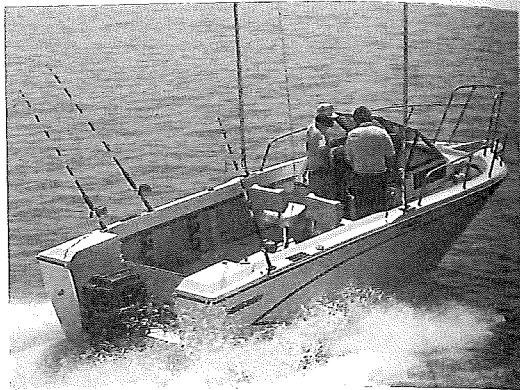
OPTIONS

Hydraulic leveller
 Side and stern canvas
 Camper canvas

ENGINE OPTIONS

190 Mercruiser
 200 Mercruiser
 205 Mercruiser
 230 Mercruiser
 260 Mercruiser
 260 O.M.C.

V-243



SPECIFICATIONS

LOA 24'4" 7.4M Approximate Weight 2650 lbs. 1202 kg.
 Beam 96" 2.4M Ice Box Capacity 3.3 c.f. 99 qt. 93 l.
 Depth 69 1/4" 1.8M Transom Width 94 1/4" 2.4M
 Maximum Depth 80 3/4" 2.1M Max. Horsepower 280
 Stor. Capacity 24.8 c.f. .7 cu.m.
 Motor Shaft Length Twin 20" Single 25"
 LOA on Trailer 27'9" 8.46M Cockpit Depth 24" .61M
 Steering Mechanical Boat Ht. on Trailer 97 1/2" 2.5M
 Max. Load 2280 lbs. 1034 kg. Fuel Capacity 103 gallons
 Max. Persons Load 10 or 1500 lbs. 680 kg.
 Trailer G-24 Draft: A. Drive Unit Up 19 3/4" .5M
 B. Drive Unit Down 37 1/4" .95M

COLOR

Opaque Blue/White

V-243

STANDARD FEATURES:

Carpeted storage areas
 Electric horn
 Padded seat forward of center cabin with storage beneath soft top
 Stainless steel bow rail
 Corrosion resistant hardware
 Enclosed center cabin with:
 Cushioned vee berths and in-bulk-head cabinets, space for optional head, sliding cabin windows, folding cabin door with lockable hatch cover, ample storage
 Self-balling cockpit with fiberglass liner
 Built-in fuel tank with direct reading and electric gauges
 Large in-floor fishwells/baitwells with fiberglass lids
 Hinged splashwell transom deflector
 Non-skid 14" walk around center cabin
 Hand-laid fiberglass construction

Tempered glass tinted windshield
 High volume bilge pump with automatic float switch
 Stern storage compartment
 International running lights
 Hauser fittings in aft corners
 Foam flotation
 Non-skid deck and floor
 Custom instrument panel
 Teak step pads
 Bow pulpit
 Two helmsman chairs
 Recessed rod holders
 Stainless steel steering wheel
 B.I.A. certified
 Stainless steel bow and ski eyes
 Electric fuel gauge

OPTIONS:

Deluxe package:
 speedometer, hour meter,
 Windshield wiper, compass
 package
 Helm enclosed canvas
 Portable head

TRAILER SPECIFICATIONS

	TRAILER MODEL	LOA	CAPACITY	WEIGHT	TIRE SIZE	BRAKES
GLASTRON SSV-151 HPV-155	GA-15 Aluminum	16' 10"	1720	380	B78-13	OPT
	SG-15 Steel	17' 3"	1580	520	B78-13	OPT
	SS-15 Steel	15' 5"	1320	380	A78-13	OPT
SSV-167 HPV-165	GA-16 Aluminum	16' 10"	1720	380	B78-13	OPT
	SG-16 Steel	17' 3"	1580	520	B78-13	OPT
	TA-16 Aluminum	16' 10"	1720	520	B78-13	OPT
T-161 T-162	ST-16 Steel	17' 3"	1580	420	B78-13	OPT
	GA-17 Aluminum	18' 6"	2100	640	F78-14	OPT
	SG-17 Steel	18' 6"	2100	640	F78-14	OPT
SSV-176 SSV-177	H-17 Aluminum	19' 6"	2000	540	F78-14	OPT
	SK-17 Steel	18' 6"	2100	640	F78-14	OPT
	SG-17 Steel	19' 6"	2700	540	H78-14	OPT
HPV-170 HPV-175	GA-18 Aluminum	18' 6"	2560	640	H78-14	OPT
	SG-18 Steel	18' 6"	2560	640	H78-14	OPT
	GA-19 Aluminum	20' 6"	2700	650	H78-14	OPT
SK-180	SG-19 Steel	19' 6"	2700	560	H78-14	OPT
	GA-19 Aluminum	20' 6"	2700	650	H78-14	OPT
	SG-19 Steel	19' 6"	2700	560	H78-14	OPT
V-192 V-195	SG-19 Steel	20' 6"	2700	650	H78-14	OPT
	GA-19 Aluminum	19' 6"	2700	560	H78-14	OPT
	SG-19 Steel	19' 6"	2700	560	H78-14	OPT
SK-190 SSV-194	SG-19 Steel	19' 6"	3080	650	G78-14C	STD
	SS-19 Steel	21' 7"	3500	840	E78-14	STD
	G-21 Aluminum	25' 9"	4000	890	F78-14	STD
SV-191 V-216 V-219	G-21 Aluminum	25' 9"	4000	890	F78-14	STD
	G-23 Aluminum	24' 6"	4400	1080	F78-14	STD
	SGT-23 Steel	25' 9"	4000	890	F78-14	STD
V-222 V-233	G-24 Aluminum	25' 9"	4000	890	F78-14	STD
	SGT-23 Steel	25' 9"	4000	890	F78-14	STD
	G-24 Aluminum	25' 9"	4000	890	F78-14	STD
V-243	G-24 Aluminum	25' 9"	4000	890	F78-14	STD

TRAILER SPECIFICATIONS

	TRAILER MODEL	LOA	CAPACITY	WEIGHT	TIRE SIZE	BRAKES
GLASTRON/CARLSON CVX-16	CA-16 Aluminum	17' 8"	1720	380	B78-13	OPT
	SC-16 Steel	17' 3"	1580	520	B78-13	OPT
	CA-17 Aluminum	18' 6"	2100	420	E78-14	OPT
CVX-17	CA-17 Aluminum	17' 9"	1720	520	C78-14	OPT
	SC-17 Steel	17' 9"	1720	560	H78-14	OPT
	C-18 Aluminum	20' 6"	2700	640	H78-14	OPT
CVX-18	SC-18 Steel	18' 6"	2560	640	H78-14	OPT
	C-20 Aluminum	20' 6"	2700	540	H78-14	OPT
	C-20 Aluminum	20' 6"	2700	540	H78-14	OPT
CVX-20 Sprint Ski Machine Intimidator CV-23	C-20 Aluminum	20' 6"	2700	540	H78-14	OPT
	C-20 Aluminum	20' 6"	2700	540	H78-14	STD
	C-23 Aluminum	24' 2"	3500	840	E78-14	STD

ENGINE & PERFORMANCE INFORMATION

The following pages contain data about sterndrives offered in our 1985 product. The approximate weight information on each boat is weighed dry, or without engine or fuel, so adding the weight of the engine and 7 pounds per gallon will give you a very accurate total weight figure.

The following performance data has been compiled by Glastron's Engineering/Boat Test group, and is to be used as a guide in discussing specific models' overall performance. The data will vary depending on water conditions, altitude, wind, etc., and these variances should be noted prior to quoting performance data to the consumer. Glastron will provide additional engine data as it becomes available so that you can speak to speed, fuel consumption and other questions the customer might have regarding Glastron's performance.

MODEL:	MERCUISER 120
Horsepower	120
Cylinders	4
Cubic Inches	153
Compression Ratio	8.5:1
Max. Recommended RPM	3900-4300
Circuit Breaker	40 amp Thermal
Fuel	Regular (93 oct. research) (88 oct anti-knock Index)
Lower Unit Gear Ratio	1.98:1
Tilt	Power
Trim	Power
Length	30-27/32"
Width	21-5/8"
Height	20" (above crankshaft L) 28½" (overall)
Weight	600 lbs.

71

MODEL:	MERCUISER 140
Horsepower	140
Cylinders	4
Cubic Inches	181
Compression Ratio	8.5:1
Max. Recommended RPM	4200-4600
Circuit Breaker	40 amp Thermal
Fuel	Regular (93 oct. research) (88 oct anti-knock Index)
Lower Unit Gear Ratio	1.98:1
Tilt	Power
Trim	Power
Length	30-27/32"
Width	21-3/16"
Height	20" (above crankshaft L) 28½" (overall)
Weight	625 lbs. (pkg. weight)

MODEL:	MERCUISER 170
Horsepower	170
Cylinders	4
Cubic Inches	224
Compression Ratio	8.8:1
Max. Recommended RPM	3800-4200
Circuit Breaker	40 amp Thermal
Fuel	Regular
Lower Unit Gear Ratio	1.84:1
Tilt	Power
Trim	Power
Length	36-3/8"
Height	20-1/4" (above crankshaft L) 28-3/4" (overall)
Width	23-5/8"
Weight	750 lbs. (pkg. weight)

MODEL:	MERCUISER 185 w/Power Steering
Horsepower	185
Cylinders	6
Cubic Inches	229 (3.8 Liters)
Compression Ratio	8.5:1
Max. Recommended RPM	4400-4800
Circuit Breaker	40 amp Thermal
Fuel	Regular
Lower Unit Gear Ratio	1.84:1
Tilt	Power
Trim	Power
Length	31-13/16"
Width	28½"
Height	20" (above crankshaft L) 28¼" (overall)
Weight	920 lbs.

72

MODEL: MERCURUISER 190 w/Power Steering

Horsepower 190
 Cylinders 4
 Cubic Inches 224
 Compression Ratio 8.8:1
 Circuit Breaker 40 amp Thermal
 Fuel Regular
 Lower Unit Gear Ratio 1.65:1
 Tilt Power
 Trim Power
 Length 36½"
 Width 25"
 Height 28"
 Weight 800 lbs.

MODEL: MERCURUISER 200 w/Power Steering

Horsepower 200
 Cylinders 8
 Cubic Inches 305
 Compression Ratio 8.5:1
 Max. Recommended RPM 3800-4200
 Circuit Breaker 40 amp Thermal
 Fuel Regular
 Lower Unit Gear Ratio 1.50:1
 Tilt Power
 Trim Power
 Length 35-27/32"
 Width 28¾"
 Height 20¾" (above crankshaft L)
 28½" (overall)
 Weight 925 lbs.

MODEL: MERCURY 230 w/Power Steering

Horsepower 230
 Cylinders 8
 Cubic Inches 305
 Compression Ratio 8.5:1
 Max. Recommended RPM 4200-4600
 Circuit Breaker 40 amp Thermal
 Fuel Regular (94 oct. research)
 (89 oct. anti-knock Index)
 Lower Unit Gear Ratio 1.50:1
 Tilt Power
 Trim Power
 Length 36-3/16"
 Width 29"
 Height 19-3/8" (above crankshaft L)
 28-3/8" (overall)
 Weight 975 lbs. (pkg. weight)

MODEL: MERCURY 260 w/Power Steering

Horsepower 260
 Cylinders 8
 Cubic Inches 350
 Compression Ratio 8.7:1
 Max. Recommended RPM 4200-4600
 Circuit Breaker 40 amp Thermal
 Fuel Regular (94 oct. research)
 Lower Unit Gear Ratio 1.50:1
 Tilt Power
 Trim Power
 Length 36-17/32"
 Width 29"
 Height 19-3/8" (above crankshaft L)
 28-3/8" (overall)
 Weight 1000 lbs. (pkg. weight)

MODEL: OMC 120 SELECTRIM

Horsepower 120
 Cylinders 4
 Cubic Inches 153
 Compression Ratio 8.5:1
 Max. Recommended RPM 4000-4400
 Circuit Breaker Fusible link
 Fuel Regular
 Lower Unit Gear Ratio 1.61:1
 Tilt Power
 Trim Power
 Length 33-5/8"
 Width 24"
 Height 19½" (above crankshaft L)
 27" (overall)
 Weight 650 lbs.

MODEL: OMC 140 SELECTRIM

Horsepower 140
 Cylinders 4
 Cubic Inches 181
 Compression Ratio 8.5:1
 Max. Recommended RPM 4000-4400
 Circuit Breaker Fusible link
 Fuel Regular (93 oct. research)
 Lower Unit Gear Ratio 1.61:1
 Tilt Power
 Trim Power
 Length 33-5/8"
 Width 24"
 Height 20-9/16" (above crankshaft L)
 28-3/16" (overall)
 Weight 675 lbs.

MODEL:	OMC V-6
Horsepower	170
Cylinders	6
Cubic Inches	229
Compression Ratio	8.5:1
Max. Recommended RPM	4200-4600
Circuit Breaker	Fusible link
Fuel	Regular (89 oct. research)
Lower Unit Gear Ratio	
Tilt	Power
Trim	Power
Length	31.81"
Height	27.68"
Weight	710 lbs.

MODEL:	OMC 260 Selectrim w/ Power Steering
Horsepower	260
Cylinders	8
Cubic Inches	350
Compression Ratio	8.7:1
Max. Recommended RPM	4000-4400
Circuit Breaker	In-line fuse
Fuel	Regular (94 oct. research)
Lower Unit Gear Ratio	1.41:1
Tilt	Power
Trim	Power
Length	37 1/2"
Width	27 3/4"
Height	30-3/16" (overall) 20 3/4" (above crankshaft L)
Weight	950 lbs.

BOAT MODEL: HPV-155		ENGINE 50 EVINRUDE	
SSV-151		PROP 11 3/4" x 17"	
MPH	RPM	GPH	MPG
5	1400	.6	8.3
15	3300	2.2	6.8
25	4400	3.4	7.4
(Full Throttle)			
31-33	5400	4.8	6.7
0-20 M.P.H. Acceleration: 3.9 Seconds			

BOAT MODEL: HPV-155		ENGINE 75 JOHNSON	
SSV-151		PROP 13 1/4" x 17"	
MPH	RPM	GPH	MPG
5	1400	.8	6.3
15	3300	2.7	5.6
25	3900	3.1	8.1
35	5400	7.7	4.5
(Full Throttle)			
36-39	5800	8.0	4.8
0-20 M.P.H. Acceleration: 3.5 Seconds			

BOAT MODEL: HPV-155		ENGINE 90 EVINRUDE	
		PROP 13" x 19"	
MPH	RPM	GPH	MPG
5	1000	1.3	3.9
15	2500	2.9	5.2
25	3400	4.2	6.0
35	4600	6.3	5.6
(Full Throttle)			
44-47	5000	9.5	4.9
0-20 M.P.H. Acceleration: 3.0 Seconds			

BOAT MODEL: T-161		ENGINE 50 EVINRUDE	
T-162		PROP 11 3/4" x 17"	
MPH	RPM	GPH	MPG
5	1500	.5	10.0
15	3300	2.1	5.0
25	4300	3.3	7.6
(Full Throttle)			
30-32	5400	4.8	6.5
0-20 M.P.H. Acceleration: 3.8 Seconds			

BOAT MODEL: T-161		ENGINE 75 JOHNSON	
T-162		PROP 13 $\frac{1}{4}$ " x 17"	
MPH	RPM	GPH	MPG
5	1500	.7	7.1
15	3400	2.6	5.8
25	3900	3.0	8.3
35	5400	7.7	4.5
(Full Throttle)			
37-39	5700	8.1	4.7
0-20 M.P.H. Acceleration: 3.5 Seconds			

BOAT MODEL: T-161		ENGINE 90 MERCURY	
		PROP 12 $\frac{3}{4}$ " x 21"	
MPH	RPM	GPH	MPG
5	900	1.3	3.8
15	2400	3.4	4.4
25	3600	4.5	5.6
35	4200	7.1	4.9
(Full Throttle)			
43-46	5000	8.2	5.6
0-20 M.P.H. Acceleration: 3.0 Seconds			

BOAT MODEL: HPV-165		ENGINE 75 JOHNSON	
SSV-167		PROP 13 $\frac{1}{4}$ " x 21"	
MPH	RPM	GPH	MPG
5	1400	.6	8.3
15	3300	2.6	5.8
25	3900	3.0	8.3
35	5300	7.8	4.5
(Full Throttle)			
36-38	5600	8.1	4.6
0-20 M.P.H. Acceleration: 3.6 Seconds			

BOAT MODEL: HPV-165		ENGINE 90 MERCURY	
SSV-167		PROP 12 $\frac{3}{4}$ " x 21"	
MPH	RPM	GPH	MPG
5	1000	1.2	4.2
15	2300	3.4	4.4
25	3700	4.4	5.7
35	4600	7.0	5.0
(Full Throttle)			
41-43	4800	8.2	5.0
0-20 M.P.H. Acceleration: 3.2 Seconds			

77

BOAT MODEL: HPV-165		ENGINE 115 EVINRUDE	
SSV-167		PROP 12 $\frac{3}{4}$ " x 21"	
MPH	RPM	GPH	MPG
5	1000	1.3	3.8
15	2300	3.3	4.5
25	3200	4.4	5.7
35	4400	7.0	5.0
(Full Throttle)			
47-49	5000	8.8	5.4
0-20 M.P.H. Acceleration: 3.0 Seconds			

BOAT MODEL: HPV-170		ENGINE 140 EVINRUDE	
HPV-175		PROP 13 $\frac{1}{4}$ " x 17"	
MPH	RPM	GPH	MPG
5	1000	1.5	3.3
15	2100	3.5	4.3
25	3300	4.4	5.7
35	4000	6.9	5.1
(Full Throttle)			
45-48	5300	11.2	4.1
0-20 M.P.H. Acceleration: 3.4 Seconds			

BOAT MODEL: HPV-170		ENGINE 175 JOHNSON	
HPV-175		PROP 14 $\frac{1}{4}$ " x 21"	
MPH	RPM	GPH	MPG
5	1000	2.6	1.9
15	2400	5.6	2.7
25	3000	6.7	3.7
35	3900	9.2	3.8
(Full Throttle)			
56-59	5200	17.7	3.3
0-20 M.P.H. Acceleration: 2.9 Seconds			

BOAT MODEL: SSV-178		ENGINE 115 EVINRUDE	
SSV-176		PROP 13" x 19"	
MPH	RPM	GPH	MPG
5	1100	1.5	3.3
15	2800	3.5	4.3
25	4000	4.7	5.3
35	4800	7.5	4.7
(Full Throttle)			
42-44	5000	8.4	4.5
0-20 M.P.H. Acceleration: 3.3 Seconds			

78

**BOAT MODEL: SSV-178
SSV-176**

MPH	RPM	GPH	MPG
5	1600	1.4	3.6
15	2500	3.5	4.3
25	3200	5.0	5.0
35	4300	6.1	5.7
(Full Throttle)			
48-50	5700	11.2	4.4

0-20 M.P.H. Acceleration: 3.2 Seconds

BOAT MODEL: SSV-177

MPH	RPM	GPH	MPG
5	900	1.0	5.0
15	2300	2.5	6.0
25	3000	4.0	6.3
35	3800	7.2	4.9
(Full Throttle)			
41-43	4500	9.5	4.4

0-20 M.P.H. Acceleration: 3.4 Seconds

BOAT MODEL: SSV-177

MPH	RPM	GPH	MPG
5	1000	.8	6.3
15	2900	4.4	3.4
25	3300	5.1	4.9
35	4000	7.2	4.9
36-39	4500	9.9	3.9

0-20 M.P.H. Acceleration: 4.2 Seconds

BOAT MODEL: SSV-177

MPH	RPM	GPH	MPG
5	1000	2.6	1.9
15	1900	3.4	4.4
25	2500	5.0	5.0
35	3500	7.7	5.4
(Full Throttle)			
45-47	4400	13.9	3.1

0-20 M.P.H. Acceleration: 3.6 Seconds

BOAT MODEL: SSV-177

MPH	RPM	GPH	MPG
5	1000	1.0	5.0
15	2200	3.5	4.3
25	2800	4.7	5.3
35	3400	7.1	4.9
(Full Throttle)			
51-53	4800	16.5	3.2

0-20 M.P.H. Acceleration: 3.4 Seconds

BOAT MODEL: SSV-177

MPH	RPM	GPH	MPG
5	1000	1.3	3.8
15	2000	4.2	3.6
25	2600	4.0	6.3
35	3600	9.0	3.9
(Full Throttle)			
46-49	4800	13.8	3.6

0-20 M.P.H. Acceleration: 3.7 Seconds

BOAT MODEL: SSV-177

**ENGINE 170 O.M.C.
PROP 14 1/4" x 21"**

MPH	RPM	GPH	MPG
5	1000	1.2	4.2
15	2200	4.3	3.5
25	2800	4.8	5.2
35	3600	9.1	3.8
46-49	(Full Throttle) 4800	13.9	3.5

0-20 M.P.H. Acceleration: 3.7 Seconds

BOAT MODEL: SX-180

**ENGINE 170
MERCURISER
PROP 13 1/2" x 23"**

MPH	RPM	GPH	MPG
5	1000	1.6	3.1
15	1900	3.4	4.4
25	2400	4.0	6.3
35	3500	6.5	5.4
46-48	(Full Throttle) 4300	14.1	3.3

0-20 M.P.H. Acceleration: 3.8 Seconds

BOAT MODEL: SX-180

**ENGINE 190
MERCURISER
PROP 13 3/4" x 21"**

MPH	RPM	GPH	MPG
5	1000	1.0	5.0
15	2200	3.5	4.3
25	2800	4.7	5.3
35	3400	7.1	4.9
49-52	(Full Throttle) 4800	16.6	3.1

0-20 M.P.H. Acceleration: 3.6 Seconds

BOAT MODEL: SX-180

**ENGINE 185
MERCURISER
PROP 13 1/2" x 23"**

MPH	RPM	GPH	MPG
5	1000	1.3	3.8
15	2000	4.3	3.5
25	2600	4.1	6.1
35	3700	9.1	3.8
47-50	(Full Throttle) 4800	13.8	3.5

0-20 M.P.H. Acceleration: 3.8 Seconds

BOAT MODEL: SX-180

**ENGINE 200
MERCURISER
PROP 13 3/4" x 21"**

MPH	RPM	GPH	MPG
5	900	1.1	4.5
15	1800	4.0	3.8
25	2800	4.7	5.3
35	3200	6.7	5.2
45-47	(Full Throttle) 4300	19.0	2.5

0-20 M.P.H. Acceleration: 3.6 Seconds

BOAT MODEL: SX-180

**ENGINE 230
MERCURISER
PROP 13 1/2" x 23"**

MPH	RPM	GPH	MPG
5	900	1.1	4.5
15	1900	4.1	3.7
25	2500	4.9	5.1
35	2900	6.9	5.1
50-53	(Full Throttle) 4500	17.1	3.0

0-20 M.P.H. Acceleration: 3.4 Seconds

BOAT MODEL: SX-180

MPH	RPM	GPH	MPG
5	800	1.7	2.9
15	1800	4.0	3.8
25	2200	4.5	5.6
35	3000	8.2	4.3
(Full Throttle)			
56-59	4600	21.6	2.7

0-20 M.P.H. Acceleration: 3.0 Seconds

BOAT MODEL: SX-180

MPH	RPM	GPH	MPG
5	1000	1.3	3.8
15	2200	4.3	3.5
25	2800	4.8	5.2
35	3600	9.1	3.8
(Full Throttle)			
46-49	4700	14.0	3.4

0-20 M.P.H. Acceleration: 3.8 Seconds

BOAT MODEL: SX-180

MPH	RPM	GPH	MPG
5	800	1.5	3.3
15	1700	4.0	3.8
25	2100	4.4	5.7
35	3000	8.2	4.3
(Full Throttle)			
56-59	4500	22.1	2.7

0-20 M.P.H. Acceleration: 3.0 Seconds

**BOAT MODEL: SX-190
SSV-194**

MPH	RPM	GPH	MPG
5	1000	1.6	3.1
15	2000	3.5	4.3
25	2500	4.1	6.1
35	3600	6.7	5.2
(Full Throttle)			
45-47	4300	14.2	3.3

0-20 M.P.H. Acceleration: 3.8 Seconds

**BOAT MODEL: SX-190
SSV-194**

MPH	RPM	GPH	MPG
5	1000	1.1	4.5
15	2200	3.6	4.2
25	2900	4.8	5.2
35	3500	7.3	4.8
(Full Throttle)			
48-50	4800	16.7	3.0

0-20 M.P.H. Acceleration: 3.6 Seconds

**BOAT MODEL: SX-190
SSV-194**

MPH	RPM	GPH	MPG
5	1100	1.4	3.6
15	2100	4.3	3.5
25	2600	4.2	6.0
35	3700	9.3	3.8
(Full Throttle)			
47-50	4800	14.0	3.6

0-20 M.P.H. Acceleration: 3.8 Seconds

**ENGINE 170
MERCURISER
PROP 13 1/2" x 23"**

GPH	MPG
1.6	3.1
3.5	4.3
4.1	6.1
6.7	5.2

**ENGINE 190
MERCURISER
PROP 13 1/2" x 23"**

GPH	MPG
1.1	4.5
3.6	4.2
4.8	5.2
7.3	4.8

**ENGINE 185
MERCURISER
PROP 13 1/2" x 23"**

GPH	MPG
1.4	3.6
4.3	3.5
4.2	6.0
9.3	3.8

**BOAT MODEL: SX-190
SSX-194**

MPH	RPM	GPH	MPG
5	1000	1.2	4.2
15	1800	4.1	3.7
25	2800	4.7	5.3
35	3300	6.9	5.1
(Full Throttle)			
44-46	4300	19.4	2.4

0-20 M.P.H. Acceleration: 3.6 Seconds

**BOAT MODEL: SX-190
SSV-194**

MPH	RPM	GPH	MPG
5	1000	1.2	4.2
15	1900	4.2	3.6
25	2600	4.9	5.1
35	3100	6.8	5.1
(Full Throttle)			
48-51	4500	17.2	3.0

0-20 M.P.H. Acceleration: 3.5 Seconds

**BOAT MODEL: SX-190
SSV-194**

MPH	RPM	GPH	MPG
5	800	1.7	2.9
15	1800	4.0	3.8
25	2300	4.5	5.6
35	3000	8.2	4.3
(Full Throttle)			
56-59	4600	21.6	2.5

0-20 M.P.H. Acceleration: 2.9 Seconds

**BOAT MODEL: SX-190
SSV-194**

MPH	RPM	GPH	MPG
5	1100	1.4	3.6
15	2200	4.4	3.4
25	2900	4.9	5.1
35	3600	9.2	3.8
(Full Throttle)			
45-48	4700	14.1	3.8

0-20 M.P.H. Acceleration: 3.4 Seconds

**BOAT MODEL: SX-190
SSV-194**

MPH	RPM	GPH	MPG
5	800	1.6	3.1
15	1800	4.1	3.7
25	2200	4.5	5.6
35	3000	8.1	4.2
(Full Throttle)			
56-58	4400	22.0	2.6

0-20 M.P.H. Acceleration: 3.0 Seconds

BOAT MODEL: SV-191

MPH	RPM	GPH	MPG
5	1000	1.0	5.0
15	2600	2.9	5.2
25	3500	4.5	5.6
35	4600	10.7	3.3
(Full Throttle)			
36-38	4800	10.8	3.4

0-20 M.P.H. Acceleration: 4.1 Seconds

BOAT MODEL: SV-191

**ENGINE 170
MERCURISER
PROP 13½" x 23"**

MPH	RPM	GPH	MPG
5	1000	1.5	3.3
15	2000	3.3	4.5
25	2400	4.0	6.3
35	3400	7.6	4.6
(Full Throttle)			
46-48	4400	15.0	3.0

0-20 M.P.H. Acceleration: 3.8 Seconds

BOAT MODEL: SV-191

**ENGINE 190
MERCURISER
PROP 13¾" x 21"**

MPH	RPM	GPH	MPG
5	1000	1.0	5.0
15	2100	3.4	4.4
25	2700	4.6	5.4
35	3400	7.0	5.0
(Full Throttle)			
49-51	4800	16.7	3.0

0-20 M.P.H. Acceleration: 3.6 Seconds

BOAT MODEL: SV-191

**ENGINE 185
MERCURISER
PROP 13¾" x 21"**

MPH	RPM	GPH	MPG
5	1000	1.3	3.8
15	2000	4.3	3.5
25	2700	4.2	6.0
35	3800	9.2	3.8
(Full Throttle)			
44-46	4800	13.9	3.3

0-20 M.P.H. Acceleration: 3.9 Seconds

BOAT MODEL: SV-191

**ENGINE 200
MERCURISER
PROP 14" x 19"**

MPH	RPM	GPH	MPG
5	900	1.1	4.5
15	1800	4.0	3.8
25	2700	4.7	5.3
35	3200	6.7	5.2
(Full Throttle)			
44-46	4200	18.8	2.4

0-20 M.P.H. Acceleration: 3.7 Seconds

BOAT MODEL: SV-191

**ENGINE 230
MERCURISER
PROP 13½" x 23"**

MPH	RPM	GPH	MPG
5	900	1.0	5.0
15	1800	4.0	3.8
25	2500	4.8	5.2
35	2900	6.8	5.1
(Full Throttle)			
48-51	4500	17.0	3.4

0-20 M.P.H. Acceleration: 3.0 Seconds

BOAT MODEL: SV-191

**ENGINE 260
MERCURISER
PROP 13½" x 23"**

MPH	RPM	GPH	MPG
5	800	1.7	2.9
15	1800	4.0	3.8
25	2100	4.4	5.7
35	3000	8.1	4.3
(Full Throttle)			
51-54	4600	21.4	2.5

0-20 M.P.H. Acceleration: 3.0 Seconds

BOAT MODEL: SV-191

MPH	RPM	GPH	MPG
5	1000	.8	6.3
15	2800	4.2	3.6
25	3200	4.7	5.3
35	4000	7.2	4.9
36-39	4400	10.2	3.8

0-20 M.P.H. Acceleration: 4.1 Seconds

BOAT MODEL: SV-191

MPH	RPM	GPH	MPG
5	900	1.2	4.2
15	2100	4.2	3.6
25	2800	4.7	5.3
35	3600	9.1	3.8
44-47	(Full Throttle) 4700	14.0	3.3

0-20 M.P.H. Acceleration: 3.8 Seconds

BOAT MODEL: SV-191

MPH	RPM	GPH	MPG
5	800	1.6	3.1
15	1800	4.1	3.7
25	2200	4.5	5.6
35	3000	8.1	4.2
54-57	(Full Throttle) 4400	22.0	2.6

0-20 M.P.H. Acceleration: 3.0 Seconds

BOAT MODEL: V-192

MPH	RPM	GPH	MPG
5	1100	1.7	2.9
15	1800	3.1	4.8
25	2700	5.3	4.7
35	3900	7.7	4.5
43-45	(Full Throttle) 5300	10.9	4.0

0-20 M.P.H. Acceleration: 3.5 Seconds

BOAT MODEL: V-192

MPH	RPM	GPH	MPG
5	1000	2.6	1.9
15	2400	5.7	2.6
25	3100	6.8	3.7
35	3900	9.2	3.8
50-53	(Full Throttle) 5200	18.0	2.9

0-20 M.P.H. Acceleration: 3.0 Seconds

BOAT MODEL: V-195 ENGINE 170 MERCURISER

MPH	RPM	GPH	MPG
5	1000	1.5	3.3
15	1900	3.5	4.3
25	2500	4.1	6.1
35	3600	6.4	5.5
46-48	(Full Throttle) 4300	14.2	3.3

0-20 M.P.H. Acceleration: 4.0 Seconds

BOAT MODEL V-195 ENGINE 190 MERCURISER

MPH	RPM	GPH	MPG
5	1100	1.1	4.5
15	2100	3.6	4.2
25	2800	4.8	5.2
35	3500	7.2	4.9
46-49	(Full Throttle) 4700	16.8	2.9

0-20 M.P.H. Acceleration: 3.6 Seconds

**BOAT MODEL: V-195 ENGINE 185 MERCURISER
PROP 13½" x 23"**

MPH	RPM	GPH	MPG
5	1100	1.3	3.8
15	2400	4.5	3.3
25	2800	5.0	5.0
35	3700	9.2	3.8
(Full Throttle)			
44-46	4800	17.6	2.6

0-20 M.P.H. Acceleration: 3.8 Seconds

**BOAT MODEL: V-195 ENGINE 200 MERCURISER
PROP 14" x 19"**

MPH	RPM	GPH	MPG
5	1000	1.2	4.2
15	1900	4.0	3.8
25	2800	4.8	5.2
35	3300	6.8	5.1
(Full Throttle)			
44-46	4300	19.1	2.4

0-20 M.P.H. Acceleration: 3.7 Seconds

**BOAT MODEL: V-195 ENGINE 230 MERCURISER
PROP 13½" x 23"**

MPH	RPM	GPH	MPG
5	900	1.2	4.2
15	1800	4.1	3.7
25	2600	4.9	5.1
35	3000	7.0	5.0
(Full Throttle)			
49-52	4500	17.2	3.0

0-20 M.P.H. Acceleration: 3.5 Seconds

**BOAT MODEL: V-195 ENGINE 260 MERCURISER
PROP 13½" x 23"**

MPH	RPM	GPH	MPG
5	800	1.8	2.8
15	1800	4.1	3.7
25	2300	4.6	5.4
35	3100	8.2	4.3
(Full Throttle)			
53-56	4600	21.8	2.5

0-20 M.P.H. Acceleration: 3.0 Seconds

**BOAT MODEL: V-195 ENGINE 170 O.M.C.
PROP 14¼" x 21"**

MPH	RPM	GPH	MPG
5	900	1.2	4.2
15	2200	4.4	3.4
25	2900	4.9	5.1
35	3700	9.2	3.8
(Full Throttle)			
44-47	4700	14.1	3.3

0-20 M.P.H. Acceleration: 3.9 Seconds

**BOAT MODEL: V-195 ENGINE 260 O.M.C.
PROP 14¼" x 21"**

MPH	RPM	GPH	MPG
5	800	1.6	3.1
15	1800	4.1	3.7
25	2200	4.6	5.4
35	3000	8.2	4.3
(Full Throttle)			
54-57	4400	22.0	2.6

0-20 M.P.H. Acceleration: 3.0 Seconds

BOAT MODEL: V-216**ENGINE 150 EVINRUDE
PROP 15 1/2" x 15"**

MPH	RPM	GPH	MPG
5	1000	1.4	3.6
15	3200	7.6	2.0
25	4000	9.6	2.6
30-33	(Full Throttle) 5200	14.0	2.4

0-20 M.P.H. Acceleration: 4.8 Seconds

BOAT MODEL: V-216**ENGINE 200 JOHNSON
PROP 14 1/2" x 19"**

MPH	RPM	GPH	MPG
5	1000	2.0	2.5
15	2900	3.1	4.8
25	3500	9.2	2.7
35	4600	15.3	2.3
40-43	(Full Throttle) 5500	24.6	1.7

0-20 M.P.H. Acceleration: 4.1 Seconds

**BOAT MODEL: V-219 ENGINE 170 MERCURISER
PROP 13 1/2" x 23"**

MPH	RPM	GPH	MPG
5	1100	1.7	2.9
15	2200	3.6	4.2
25	2700	4.5	5.6
35	3800	9.1	3.8
36-38	(Full Throttle) 4200	14.3	2.7

0-20 M.P.H. Acceleration: 4.3 Seconds

**BOAT MODEL: V-219 ENGINE 190 MERCURISER
PROP 13 3/4" x 21"**

MPH	RPM	GPH	MPG
5	1200	1.2	4.2
15	2300	3.9	3.8
25	2900	4.9	5.1
35	3700	9.7	3.6
38-40	(Full Throttle) 4800	16.9	2.4

0-20 M.P.H. Acceleration: 4.2 Seconds

**BOAT MODEL: V-219 ENGINE 185 MERCURISER
PROP 13 3/4" x 21"**

MPH	RPM	GPH	MPG
5	1000	1.4	3.6
15	2200	4.5	3.3
25	3000	5.0	5.0
35	3700	9.7	3.6
39-42	(Full Throttle) 4800	17.9	2.3

0-20 M.P.H. Acceleration: 4.2 Seconds

**BOAT MODEL: V-219 ENGINE 200 MERCURUISER
PROP 13³/₄" x 21"**

MPH	RPM	GPH	MPG
5	1100	1.3	3.8
15	2600	5.2	2.9
25	3000	5.9	4.2
35	3700	9.9	3.5
(Full Throttle)			
40-43	4300	19.2	2.3
0-20 M.P.H. Acceleration: 4.0 Seconds			

**BOAT MODEL: V-219 ENGINE 230 MERCURUISER
PROP 13³/₄" x 21"**

MPH	RPM	GPH	MPG
5	1000	1.2	4.2
15	2500	5.1	2.9
25	2900	5.8	4.3
35	3600	9.8	3.8
(Full Throttle)			
42-45	4600	13.3	3.3
0-20 M.P.H. Acceleration: 3.9 Seconds			

**BOAT MODEL: V-219 ENGINE 260 MERCURUISER
PROP 13¹/₂" x 23"**

MPH	RPM	GPH	MPG
5	1000	1.9	2.6
15	2400	4.6	3.3
25	2800	5.3	4.7
35	3500	9.0	3.9
(Full Throttle)			
44-47	4700	21.8	2.1
0-20 M.P.H. Acceleration: 3.8 Seconds			

BOAT MODEL: V-219

**ENGINE 170 O.M.C.
PROP 14¹/₂" x 19"**

MPH	RPM	GPH	MPG
5	1000	1.3	3.8
15	2300	4.4	3.4
25	3000	5.1	4.9
35	3800	9.5	3.7
(Full Throttle)			
39-42	4600	14.1	2.9
0-20 M.P.H. Acceleration: 4.3 Seconds			

BOAT MODEL: V-219

**ENGINE 260 O.M.C.
PROP 14¹/₂" x 19"**

MPH	RPM	GPH	MPG
5	1100	1.8	2.8
15	2000	4.3	3.5
25	2600	5.0	5.0
35	3500	8.5	4.1
(Full Throttle)			
43-46	4400	22.1	2.1
0-20 M.P.H. Acceleration: 3.9 Seconds			

BOAT MODEL: V-243

**ENGINE 150 EVINRUDE
PROP 15¹/₂" x 15"**

MPH	RPM	GPH	MPG
5	1000	1.6	3.1
15	3200	7.7	1.9
25	4000	9.8	2.6
(Full Throttle)			
31-33	5100	14.1	2.2
0-20 M.P.H. Acceleration: 4.8 Seconds			

BOAT MODEL: V-243**ENGINE TWIN 140
EVINRUDE
PROP 13" x 19"**

MPH	RPM	GPH	MPG
5	1000	2.7	1.9
15	2700	6.4	2.1
25	3500	10.2	2.5
35	4400	13.6	2.6
(Full Throttle)			
44-47	5300	22.9	2.0

0-20 M.P.H. Acceleration: 3.6 Seconds

BOAT MODEL: V-243**ENGINE 235 EVINRUDE
PROP 14 1/2" x 19"**

MPH	RPM	GPH	MPG
5	1000	2.1	2.3
15	2000	3.2	4.7
25	3600	9.4	2.7
35	4700	15.5	2.3
(Full Throttle)			
40-42	5400	24.9	1.6

0-20 M.P.H. Acceleration: 3.9 Seconds

BOAT MODEL: CVX-16**ENGINE 90 MERCURY
PROP 12 3/4" x 21"**

MPH	RPM	GPH	MPG
5	1000	1.1	4.5
15	2400	3.5	4.3
25	3800	4.5	5.6
35	4500	7.1	4.9
(Full Throttle)			
41-43	4900	8.2	5.1

0-20 M.P.H. Acceleration: 3.2 Seconds

**BOAT MODEL: CVX-16 ENGINE 115 EVINRUDE
PROP 12 3/4" x 21"**

MPH	RPM	GPH	MPG
5	1000	1.3	3.8
15	2400	3.4	4.4
25	3200	4.5	5.6
35	4400	7.0	5.0
(Full Throttle)			
47-49	5000	8.4	5.7

0-20 M.P.H. Acceleration: 3.0 Seconds

**BOAT MODEL: CVX-17 ENGINE 115 EVINRUDE
PROP 12 3/4" x 21"**

MPH	RPM	GPH	MPG
5	1100	1.2	4.2
15	2400	3.6	4.2
25	3900	4.5	5.6
35	4700	7.2	4.9
(Full Throttle)			
40-43	4900	8.37	4.9

0-20 M.P.H. Acceleration: 3.4 Seconds

**BOAT MODEL: CVX-17 ENGINE 140 SUZUKI
PROP 12 1/2" x 23"**

MPH	RPM	GPH	MPG
5	1200	1.3	3.8
15	2300	3.8	3.9
25	2900	4.6	5.4
35	3500	6.0	5.8
(Full Throttle)			
50-53	5100	9.2	5.5

0-20 M.P.H. Acceleration: 3.2 Seconds

BOAT MODEL: CVX-18

		ENGINE 200 MERCUISER PROP 13 ³ / ₄ " x 21"	
MPH	RPM	GPH	MPG
5	900	1.0	5.0
15	1700	4.0	3.8
25	2700	4.6	5.4
35	3100	6.6	5.3
(Full Throttle)			
46-50	4300	18.8	2.7
0-20 M.P.H. Acceleration: 3.5 Seconds			

BOAT MODEL: CVX-18

		ENGINE 230 MERCUISER PROP 13 ¹ / ₂ " x 23"	
MPH	RPM	GPH	MPG
5	900	1.0	5.0
15	1800	4.1	3.7
25	2400	4.8	5.2
35	2800	6.8	5.1
(Full Throttle)			
52-56	4500	17.0	3.3
0-20 M.P.H. Acceleration: 3.4 Seconds			

BOAT MODEL: CVX-18

		ENGINE 260 MERCUISER PROP 14 ¹ / ₂ " x 23" S.S (CLEAVER)	
MPH	RPM	GPH	MPG
5	900	1.8	2.8
15	1800	4.1	3.7
25	2400	4.6	5.4
35	3000	8.2	4.3
(Full Throttle)			
56-59	4600	21.7	2.6
0-20 M.P.H. Acceleration: 2.9 Seconds			

BOAT MODEL: CVX-18

		ENGINE 260 O.M.C. PROP 14 ¹ / ₄ " x 21"	
MPH	RPM	GPH	MPG
5	900	1.7	2.9
15	1800	4.0	3.8
25	2500	4.6	5.4
35	3000	8.1	4.3
(Full Throttle)			
55-58	4400	21.9	2.6
0-20 M.P.H. Acceleration: 3.0 Seconds			

**BOAT MODEL: SKI MACHINE
SPRINT**

		ENGINE 175 JOHNSON PROP 14 ¹ / ₄ " x 21"	
MPH	RPM	GPH	MPG
5	1000	2.7	1.9
15	2600	5.6	2.7
25	3100	6.6	3.8
35	4100	9.3	3.8
(Full Throttle)			
55-57	5200	17.8	3.1
0-20 M.P.H. Acceleration: 3.1 Seconds			

**BOAT MODEL: SKI MACHINE
SPRINT**

		ENGINE 200 JOHNSON PROP 14" x 23"	
MPH	RPM	GPH	MPG
5	900	2.8	1.8
15	1900	5.8	2.6
25	2700	6.9	3.6
35	3500	10.0	3.5
(Full Throttle)			
57-60	5600	18.6	3.2
0-20 M.P.H. Acceleration: 3.0 Seconds			

BOAT MODEL: INTIMIDATOR		ENGINE 260 MERCUISER	
		PROP 14½" x 23" S.S. (Cleaver)	
MPH	RPM	GPH	MPG
5	1000	1.8	2.8
15	1800	4.2	3.6
25	2400	4.7	5.3
35	3100	8.2	4.3
(Full Throttle)			
56-59	4600	21.6	2.7
0-20 M.P.H. Acceleration: 2.9 Seconds			

BOAT MODEL: INTIMIDATOR		ENGINE 260 O.M.C.	
		PROP 14¼" x 21" S.S.	
MPH	RPM	GPH	MPG
5	900	1.7	2.9
15	1700	4.1	3.7
25	2400	4.6	5.4
35	3100	8.2	4.3
(Full Throttle)			
55-58	4400	21.7	2.7
0-20 M.P.H. Acceleration: 3.0 Seconds			

BOAT MODEL: CV-23		ENGINE 260 MERCUISER	
		PROP 13¾" x 21" STAINLESS STEEL	
MPH	RPM	GPH	MPG
5	1200	1.9	2.6
15	2000	4.3	3.5
25	2600	4.9	5.1
35	3300	8.3	4.2
(Full Throttle)			
53-56	4600	21.7	2.5
0-20 M.P.H. Acceleration: 3.6 Seconds			

BOAT MODEL: CV-23		ENGINE 260 O.M.C.	
		PROP 14½" x 19" S.S.	
MPH	RPM	GPH	MPG
5	1100	1.8	2.8
15	2000	4.3	3.5
25	2600	5.0	5.0
35	3400	8.5	4.1
(Full Throttle)			
52-55	4400	22.0	2.5
0-20 M.P.H. Acceleration: 3.7 Seconds			

Glastron Boat Company
9108 Reid Drive, Austin, Texas 78759

Conroy Industries
3150 IH 35 West, New Braunfels, Texas 78130

Printed in U.S.A.