

*Glastron Family Boats   Glastron Carlson Performance Sports Boats  
Glastron Fishing Machines   Glastron Custom Aluminum Trailers*

GLASTRON AND GLASTRON/CARLSON BOATS  
1982 LIMITED WARRANTY

Glastron Boat Company (Glastron) warrants each new Glastron and Glastron/Carlson boat to the original purchaser only to be free from defects in material and workmanship under normal use or service for one (1) year from date of retail purchase from an authorized Glastron Dealer according to the following terms:

Any part of the boat manufactured by Glastron and found in the judgment of Glastron to be defective in material or workmanship will be repaired or replaced at Glastron's option by an authorized Glastron dealer. If Glastron deems it proper to replace an entire boat, the terms of warranty will extend only one (1) year from date of purchase of the original boat.

The boat including any defective part must be returned to an authorized Glastron dealer within the warranty period. The expense of transporting the boat to the dealer and of returning the boat back to the owner will be paid for by the owner. Proof of purchase will be required by the authorized Glastron dealer to substantiate warranty claim. In addition, all warranty must be performed by an authorized Glastron dealer.

In recent years, fiberglass boat manufacturers have been plagued with bubble bottom problems. Although this is not a warrantable item, Glastron, in the interest of maintaining customer pride and satisfaction in our quality product, will participate in correcting this problem should it occur within the first year of retail ownership. If a boat is going to be moored in the water for a length of time, it is recommended that an antifouling coating be applied to help preserve the quality finish of the hull.

**WARRANTY DOES NOT COVER:**

This warranty does not cover any boat that has been subject to misuse, neglect, negligence, or accident, or operated for racing purposes or operated in any way contrary to the operating or maintenance instructions as specified in the Glastron Owner's —

Operator's Manual. The warranty does not cover any boat that has been altered or modified so as to adversely affect the boat's operation, performance or durability, or that has been altered or modified so as to change, the intended use of the boat. In addition, the warranty does not extend to repairs made necessary by normal wear, or by the use of parts or accessories which in the reasonable judgment of Glastron are either incompatible with the boat or adversely affect its operation, performance or durability. This warranty does not cover: (1) engines, outdrives, controls, batteries or other equipment or accessories carrying their own individual warranties (appropriate adjustments to them provided by their respective manufacturers); (2) machinery, equipment and accessories not factory installed; (3) windshield breakage; (4) non-structural cosmetic defects in the gelcoat such as crazes (hairline cracks); (5) fading or discoloration of vinyls or gelcoat; (6) any Glastron boat which has been overpowered or overloaded (in excess of horse power and/or capacity as specified on capacity plate on each Glastron boat); (7) any Glastron used for commercial purposes. Upon request, Glastron may provide special written warranty for specific commercial applications.

Glastron boats contain flotation material; however, there is no boat that is unsinkable. Therefore, personal flotation devices should be carried for each passenger in accordance with U.S. Coast Guard requirements.

**NO OTHER WARRANTIES MADE:  
Liability Disclaimer**

Repairs or replacements qualifying under this warranty will be performed by an authorized Glastron dealer following delivery of the boat to the dealer's place of business. Glastron's responsibility in respect to claims is limited to making the required repairs or replacements, and no claim of breach of warranty shall be cause for cancellation or rescission of the contract of sale of any boat.

Glastron assumes no responsibility for loss of use of the boat, loss of time, inconvenience, or other damages, consequential or otherwise, including, but not limited to, expense for gasoline, expense of

returning the boat to the dealer and expense of returning the boat back to the owner, removal of the motor from a boat and the reinstallation, mechanics travel time, in-and-out-of-water charges, telephone or telegram charges, trailering or towing charges, rental of another boat during the time warranty repairs are being performed, travel, lodging, loss or damage to personal property, or of revenue.

Glastron reserves the right to change or improve the design of any boat without assuming any obligation to modify any boat previously manufactured.

ALL IMPLIED WARRANTIES ARE LIMITED IN DURATION TO THE ONE (1) YEAR WARRANTY PERIOD. ACCORDINGLY, ANY SUCH IMPLIED WARRANTIES INCLUDING MERCHANTABILITY, FITNESS FOR A PARTICULAR PURPOSE, OR OTHERWISE, ARE DISCLAIMED IN THEIR ENTIRETY AFTER THE EXPIRATION OF THE ONE (1) YEAR WARRANTY PERIOD. GLASTRON'S OBLIGATION UNDER THIS WARRANTY IS STRICTLY AND EXCLUSIVELY LIMITED TO THE REPAIR OR REPLACEMENT OF DEFECTIVE PARTS, AND GLASTRON DOES NOT ASSUME OR AUTHORIZE ANYONE TO ASSUME FOR THEM ANY OTHER OBLIGATION.

Some states do not allow limitations on how long an implied warranty lasts and some states do not allow the exclusion or limitation of incidental or consequential damages, so the above limitations and exclusions may not apply to you.

This warranty gives you specific legal rights, and you may also have other rights which vary from state to state.

This warranty applies only to boats sold in the United States and Canada.

In keeping with Glastron's policy of continuous improvement of all products, we reserve the right to change specifications and prices without notice.

## GLASTRON CUSTOM TRAILERS 1982 LIMITED WARRANTY

Conroy Industries warrants each new Glastron custom trailer to the original purchaser only to be free from defects in material and workmanship under normal use of service for one (1) year from date of retail purchase from an authorized Glastron trailer dealer according to the following terms:

Any part of the trailer manufactured by Conroy Industries and found in the judgement of Conroy Industries to be defective in material or workmanship will be repaired or replaced at Conroy Industries' option by an authorized Glastron trailer dealer.

The trailer, including any defective part, must be returned to an authorized Glastron trailer dealer within the warranty period. The expense of transporting the trailer to the dealer and of returning the trailer to the owner will be paid for by the owner. Proof of purchase by owner will be required by the authorized Glastron trailer dealer to substantiate any warranty claim. In addition, all warranty work must be performed by an authorized Glastron trailer dealer.

If Conroy Industries deems it proper to replace an entire trailer, the term of warranty will extend only one (1) year from date of purchase of the original trailer.

### WARRANTY DOES NOT COVER:

This warranty does not cover any Glastron custom trailer that has been subject to misuse, neglect, negligence, or accident, or operated in any way contrary to the operating or maintenance instructions as specified in the Conroy Industries Owner's - Operator's Manual. The warranty does not cover any trailer that has been altered or modified so as to adversely affect the trailer's operation, performance or durability, or that has been altered or modified so as to change the intended use of the trailer.

In addition, the warranty does not extend to repairs made necessary by normal wear, or by the use of parts or accessories which in the judgement of Conroy Industries are either incompatible with the trailer or adversely affect its operation, performance or durability.

**IN ADDITION:**

This warranty does not cover: (1) any boats transported or stored on Glastron Custom trailers; (2) other equipment or accessories carrying their own individual warranties (appropriate adjustments to them provided by their respective manufacturers); (3) machinery, equipment and accessories not factory installed; (4) Glastron Custom Trailers used for commercial purposes; (5) road gravel damage to paint; (6) fading of carpet or paint due to normal wear or weathering; (7) any Glastron Custom Trailer which has been over-loaded in excess of the capacity stated on the identification plate and in the Conroy Industries Owner's - Operator's Manual.

**NO OTHER WARRANTIES MADE:  
LIABILITY DISCLAIMER**

Repairs or replacements qualifying under this warranty will be performed by an authorized Glastron trailer dealer following delivery of the trailer to the dealer's place of business. Conroy Industries' responsibility in respect to claims is limited to making the required repairs or replacement, and no claim of breach of warranty shall be cause for cancellation or recession of the contract of sale of any trailer.

Glastron assumes no responsibility for loss of the trailer, loss of time, inconvenience, or other damage, consequential or otherwise, including but not limited to, expense for gasoline, expense of transporting the trailer to the dealer and expense of returning the trailer to the owner, removal of boats from the Custom Trailer for any purpose, mechanic's travel time, telephone and telegram charges, road service or towing charges, rental of another trailer during the time warranty repairs are being performed, travel, lodging, loss or damage to personal property, or loss of revenue or earnings.

Conroy Industries reserves the right to change or improve the design of any Glastron Custom Trailer without assuming any obligation to modify any trailer previously manufactured.

**ALL IMPLIED WARRANTIES ARE LIMITED IN DURATION TO THE ONE (1) YEAR WARRANTY PERIOD. ACCORDINGLY, ANY SUCH IMPLIED WARRANTIES INCLUDING MERCHANTABILITY, FITNESS FOR A PARTICULAR PURPOSE, OR OTHERWISE, ARE DISCLAIMED IN THEIR ENTIRETY AFTER THE EXPIRATION OF THE ONE (1) YEAR WARRANTY PERIOD. CONROY INDUSTRIES' OBLIGATION UNDER THIS WARRANTY IS STRICTLY AND EXCLUSIVELY LIMITED TO THE REPAIR OR REPLACEMENT OF DEFECTIVE PARTS, AND CONROY INDUSTRIES DOES NOT ASSUME OR AUTHORIZE ANYONE TO ASSUME FOR THEM ANY OTHER OBLIGATION.**

Some states do not allow limitations on how long an implied warranty lasts and some states do not allow the exclusion or limitation of incidental or consequential damages; so the above limitations and exclusions may not apply to you.

This warranty applies only to Glastron Custom Trailers sold in the United States and Canada.

In keeping with Conroy Industries' policy of continuous improvement of all products, we reserve the right to change specifications and prices without notice.

## 1982 GLASTRON AND CARLSON BOAT LINE

When Glastron builds a boat, it stays built. This certainly isn't the easiest or cheapest approach to boat construction, but it is one which Glastron feels creates satisfied customers year after year.

Glastron has created this dealer handbook which will provide you, the dealer, with information pertinent to each boat in the Glastron and Carlson model line. Its size is such that it can be carried with you on the showroom floor and referred to should specific questions come up pertaining to specifications, features or safety standards.

While each Glastron boat may be constructed in a different manner to suit its design, use and capability, there are many items which remain standard throughout the Glastron line.

### HAND LAY-UP CONSTRUCTION

Hand lay-up construction is the primary method of manufacture in all Glastron and Glastron/Carlson boats. In the hand lay-up method, three basic raw materials, fiberglass mat, fiberglass roving and resin are used in the basic lay-up of most hulls and decks. In strength and construction the hand lay-up method can be favorably compared to plywood lamination. Plywood obtains its strength and resilience through its continuous layers, one bonded to the other. The same principle applies in the hand lay-up method of building a fiberglass boat.

It should be noted that certain parts, due to their complex design, lend themselves to the chopper method of construction to prevent excessive overlaps and heat shrinkage marks. At the present time, Glastron is using this technique on certain small parts and in certain complex liner/deck model boats.

Each Glastron boat receives a different hull lay-up, depending upon its size and horsepower requirements. These lay-ups may range from two layers of 1½ oz. mat and one layer of 24 oz. roving in small boats up to four 1½ oz. mats and two 24 oz. rovings in larger models.

An explanation of the weight of fiberglass materials is as follows:

1½ oz. mat weighs 1½ oz. per square foot  
24 oz. of woven roving weighs 24 oz. per sq. foot

In each Glastron model, the keel areas of fiberglass are overlapped, thereby providing a double thickness in these areas of impact.

### GLASTRON STRINGER SYSTEM

While Glastron provides foam flotation in each of its boats, up to 24', we do not feel that foam should be used as a structural support in the hull. Therefore, most Glastrons manufactured contain a rigid stringer system to support the hull and maintain its uniform shape. These stringers are encapsulated in fiberglass and bonded to the hull to assure a rigid single structure. The floor is then fastened in place to the stringer system. In Glastron's new series of salt water fishing boats, a unique fiberglass liner system will be utilized which will be independent of the structural system to eliminate stress and crazing.

### FUEL SYSTEMS

All Glastron fuel systems comply with current Boating Industry Association specifications. All Glastron fuel tanks are pressure checked again when the fuel lines are attached to assure that there are no leaks around the fittings. Glastron uses copper lines and flared fittings in its fuel system (some systems use a hose instead of tubing). In addition, each permanent fuel tank installed includes anti-siphon protection to eliminate the possibility of unwanted fuel spillage.

### SEAT AND SEAT VINYL

Glastron manufactures almost all of its own seats for installation in Glastron Boats. Wood used in Glastron seats, as well as all exposed wood in the boats, is dipped in wood preservative in order to provide maximum protection against the possibility of delamination and dry rot. All plywood is bonded with waterproof exterior grade glue. Joints are glued and T-nuts are used extensively. Glastron vinyls are used in seat

and other areas of the boats are the highest standard in the industry. These are 32 oz. marine grade vinyls which have been checked in Glastron's own weatherometer to determine their durability under ultraviolet light and weathering. All Glastron seats, except for certain fishing boat and sport seat models, are back-to-back sleeper seats which may be extended for the convenience of the owner

#### GLASTRON GELCOATS

Glastron gelcoats are one of the added features in creating long lasting value. A new formula gelcoat was developed jointly by Glastron and its resin and pigment suppliers. This gelcoat is applied at an average thickness of 20ml. - 22 ml. (wet), 16 ml - 18 ml. (dry) to create a bright, durable finish. Tests in Glastron's weatherometer indicate that the new finish has a much improved resistance to fading, chalking, crazing and blistering.

#### FOAM FLOTATION

All boats manufactured by Glastron comply with the U.S. Coast Guard regulations and B.I.A. standards for flotation. All Glastron's O/B's under 20 feet have level flotation. All other models have basic flotation.

#### B.I.A. CERTIFICATION

All boats manufactured by Glastron are certified by the Boating Industry Association as having met current established standards in the areas of fuel and electrical systems, compartment ventilation, steering, lighting, load capacities, flotation and horsepower limitations (O/B only). All Glastron boats are manufactured in compliance with U.S. Coast Guard Federal Regulations.

Many questions have arisen concerning B.I.A. certification of horsepower for outboards. The U.S. Coast Guard and many states now use this certification as a standard for horsepower limitation on all manufacturers' boats. This horsepower certification is arrived at in the following manner for Glastron boats. NOTE: Different methods may be used for smaller boats having no remote steering or different hull forms.

- (1) Multiply the length of the boat in feet and tenths of feet times the maximum transom width in feet and tenths of feet.
- (2) Round off the previous answer down to the nearest whole number and multiply by two.
- (3) Subtract 90.
- (4) If the number is not a multiple of five, raise it to the next multiple of five.

EXAMPLE:  
Glastron SSV-176 - h.p. calculation

Length	17.10
Transom Width	<u>x 6.62</u>
	113.20

Round off to 113	
Multiply by 2	113 x 2 = 226
Subtract 90	226 - 90 = 136
Round off to next higher multiple of 5	= 140 h.p.

This will provide you with the maximum B.I.A. certified and U.S.C.G. horsepower rating which can be established for a specific model of boat.

Glastron does not recommend overpowering. To do so will result in voiding the warranty.

## GLASTRON STANDARD EQUIPMENT

Glastron boats feature many items as standard equipment which serve to increase the customer's appreciation and enjoyment of his boat.

- (1) Hand lay-up of hull construction for superior performance and high impact strength.
- (2) Factory installed vinyl softtops on most models.
- (3) Ski eyes on all Glastron outboards and Stern-drives.
- (4) Deluxe sport steering wheel in all outboards.
- (5) Lockable glove compartments in most models.
- (6) Exclusive Glastron steering wheel in most stern-drives and stainless steel in all cruisers.
- (7) Foam flotation in boats under 24'.
- (8) Certification for fuel and electrical systems, compartment ventilation, steering, lighting, load capacities, flotation, and horsepower limitations (O/B only).
- (9) Mechanical steering.
- (10) Cleats.
- (11) All stern-drives have bilge pumps and bilge blowers.
- (12) All stern-drives feature the Glastron "Command console" instrumentation panel.
- (13) Speedometers, tachometer and electric horns on outboard models.
- (14) Most Glastron windshields, except for wrap-around style, are tempered glass for durability and ease of cleaning.

## GLASTRON ENGINE WEIGHT CHART

All Glastron stern-drives have been shown without engine weight. To arrive at the total boat weight with engine installed, refer to boat weight on individual model specifications page and add applicable engine weight.

Keep in mind when arriving at trailer capacity that this weight does not take into consideration additional weight loads for fuel, gear, anchors, battery, etc., which the trailer will have to support.

<u>Engine Model</u>	<u>Weight (lbs.)</u>
Merc 120	600
Merc 140	625
Merc 470	750
Merc 485 *	800
Merc 228 *	975
Merc 260 *	975
OMC 120	650
OMC 140	675
OMC V6	710
OMC 260 *	950

\* Power Steering Included  
Weights may vary 25 pounds

### APPROXIMATE SPEED

Approximate speed ranges are based on actual speed checks on a ¼ mile course. Boats are tested with various props and under varying weight/load conditions to determine the recommended prop for optimum operating performance. Keep in mind that optimum performance provides the best performance through all r.p.m. ranges and does not necessarily provide the highest peak speed performance.

### PROP RECOMMENDATIONS

Glastron has recommended the prop which, in our opinion, provides the best all-around performance for the stern-drive engine-boat combination. Please keep in mind that altitude, load conditions, temperature, humidity, tuning, etc., can all affect a given boat's performance. Therefore, performance may vary dependent upon conditions.

### DEFINITIONS OF BOAT MEASUREMENTS

**Length Overall (L.O.A.)** — Distance along the centerline from the tip of the bow to the aft-most part of the hull.

**Gunwale Length** — Distance along the bumper strip from the corner of the transom to the tip of the boat.

**Maximum Beam** — Maximum width of the boat.

**Transom Width** — Maximum width of transom.

**Maximum Depth** — Vertical distance from lowest point of the keel to highest point of boat, excluding windshield, lights and other removable components.

**Transom** — Vertical distance at boat's centerline from the keel/transom intersection to the transom top.

### GLASTRON CUSTOM TRAILERS

#### Custom-Designed Aluminum Construction

Glastron custom-designed trailers are built of aluminum. Aluminum, because steel has built-in rust and corrosion problems.

Each trailer is constructed around a 4½ to 5½-inch main rail for great strength and durability. Most steel trailers start with a 4-inch main rail. Each Glastron trailer makes extensive use of aircraft-type riveted construction methods, both for strength and good looks. Riveted construction does away with ugly weld marks and resulting loss of strength commonly associated with steel trailers.

Because they're aluminum, Glastron trailer frames can be extruded to include an integral channel or raceway through which all trailer wiring and brake lines pass. The wiring harness and brake lines are permanently protected within the frame of the trailer. Wiring won't short out or break. It is fully immersable, time after time, even in salt water. And there are no metal clips to rust, no hanging wires to spoil the appearance or get in the way.

Aluminum, aircraft-type construction, is more than just good-looking. It is lightweight, durable and built to last in salt water or fresh.

#### COLORED—COORDINATED AUTOMOTIVE—TYPE PAINT

Each Glastron trailer is color-coordinated to the boat for which it was built. But that doesn't mean we just slapped a coat of trailer paint of it. Not by a long shot.

Before painting, every completely-assembled trailer frame is cleaned and then dipped in a chrome-conversion coating to provide the perfect base for paint. Then we use special automotive-type, acrylic-ename paint to achieve the perfect color. And we don't just air dry that paint, we bake it on to insure a hard, gloss surface.

Since, with our chrome-conversion process, paint adheres to aluminum just about forever, a ding won't chip or peel like it will on a steel trailer. And your trailer won't take on that battle-scarred, rusty look just about the time you've got it broken in.



## ENGINEERED CARPETED BUNK SUPPORTS

Bunk supports, the part of the trailer that actually supports your boat, look like an afterthought on most trailers. But since a Glastron trailer is custom-designed for a specific boat model, they can be perfectly positioned to cushion that hull. They support the boat in all the right places — help prevent warping and pressure dents. And you won't believe the way properly-designed bunks take the bump and grind out of loading and launching your boat.

## EXCLUSIVE WATERPROOF LIGHTING SYSTEM

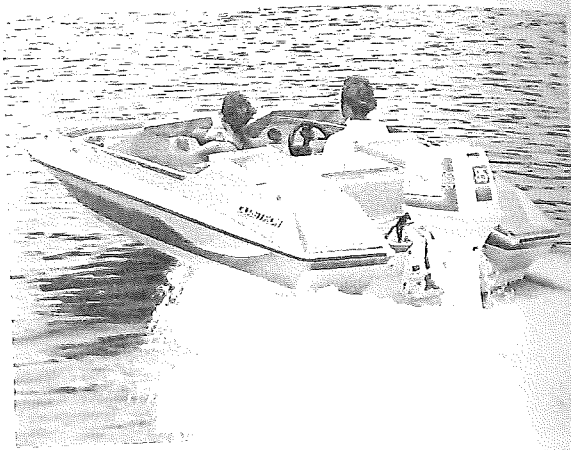
You know that all Glastron trailer wiring is protected within the raceway against damage. Well, the lighting that wiring goes to is designed to be just as tough. All light lenses are sealed by a special ultrasonic process to make them waterproof. So they're completely safe, even under water. The same process is used with the sockets. You never have to disconnect, even when you immerse your trailer. And rugged polycarbonate lenses will stand up to whatever punishment the road dishes out.

## ADDITIONAL FEATURES

Additional standard features all designed to make the Glastron Custom Trailer the ultimate for a discriminating boater, include:

- (1) A built-in Bearing Buddy system to provide constant lubrication for moisture protection;
- (2) A dropped 5½-inch axle for a stable lower center of gravity, wide stance appearance and easier shallow water launching & loading;
- (3) Custom-designed bow stop to insure proper fit and easy centering;
- (4) A custom-designed hitch assembly, Class 2, 3, and 4, for easy latching and low maintenance. All receive a 2-inch ball hitch, and safety chains and "S" hooks are standard;
- (5) Color-coordinated carpeted walkways are provided in front and back of the trailer fenders;

- (6) Large, automotive white sidewall tires (H 78 x 14) for safety and easier and more stable towing;
- (7) Aluminum hugger fenders with carpeted padding acts as side guides and protect the boat hull during launching, loading and towing;
- (8) Large 12-inch rubber keel rollers with nylon bushings are tapered to give better boat alignment during loading.



GX-150

Open-bow sportabout for skiing and fun running; this 15-footer delivers. It's low-profile look and light weight offer the complete package for the young-at-heart.

PACKAGE PRICE \_\_\_\_\_ LIST

Boat	_____
Motor ___ H.P.	_____
Trailer	_____
Accessories	_____
Total List	_____
Sale Price	_____

GX-150

**SPECIFICATIONS:**

LOA	15' 5" - 4.70 m
Beam	77½" - 1.97 m
Motor Shaft length	20" - 50.8 cm
Transom length	74¼" - 1.89 m
Fuel capacity	N/A
Depth	34" - .86 m
Approximate weight	650 lbs. - 294 kg
Maximum load	1200 lbs. - 544 kg
H.P. Rating	90 h.p.
Steering	Mechanical
Glastron trailer	GA-15
Colors	Metalflake Silver & Burgundy

**STANDARD FEATURES:**

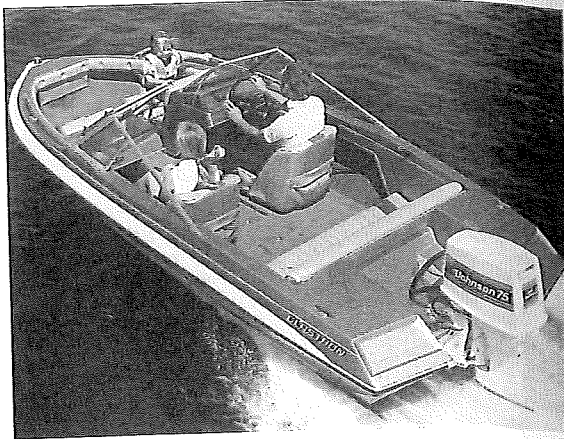
- Hand-laid fiberglass construction
- Bench and bow seating
- Ice chest in aft deck
- Two bow seats
- Smoked plexiglass windscreen
- In-floor ski storage
- Plush carpet
- Deluxe sport wheel
- Chrome-plated hardware
- Fuel tank compartment behind driver bench
- B.I.A. certified
- Level flotation
- Running lights with removable stern light
- Stainless steel bow eye and ski eyes
- Bow storage compartment
- Horn
- Speedometer
- Tachometer

**OPTIONS:**

- Cockpit cover
- Custom mooring cover

**PERFORMANCE:**

Optimum Performance Range 50-90 h.p.



SSV - 151 \*

A lightweight, full-featured model that lets a small boat handle a big family. The Glastron 1st time buyer boat that does it all.

\*Design Patent Pending

PACKAGE PRICE \_\_\_\_\_ LIST

Boat	_____
Motor _____ H.P.	_____
Trailer	_____
Accessories	_____
Total List	_____
Sale Price	_____

**SPECIFICATIONS:**

LOA	15' 5" - 4.7 m
Beam	77½" - 1.97 m
Motor shaft length	20" - 50.8 cm
Transom width	74¾" - 1.89 m
Fuel capacity	N/A
Depth	30" - .76 m
Approximate weight	700 lbs. - 317 kg
Maximum load	1200 lbs. - 544 kg
H.P. Rating	90 h.p.
Steering	Mechanical
Glastron trailer	GA-15
Colors	Metalflake Blue

**STANDARD FEATURES:**

- Hand-laid fiberglass construction
- Bench and bucket seats
- Two cushioned bow seats
- Walk-through tempered glass windshield
- Plush carpet
- Chrome-plated hardware
- Deluxe sport wheel
- Running light with removable stern light
- Stainless steel bow eye and ski eyes
- Fuel tank compartment behind bench seat
- In-floor ski storage
- Level flotation
- B.I.A. certified
- Easy-up soft top with boot cover
- Ice chest in floor

**OPTIONS:**

- Side and aft curtains
- Tonneau cover
- Custom mooring cover

**PERFORMANCE:**

Optimum Performance Range 50-90 h.p.



SSV - 164\*

This sprightly entry in the Glastron line offers the stern-drive buyer the closed bow protection of the new SSV-164. All the performance, comfort, protection and style you've come to expect from Glastron.

\* Design Patent Pending

LIST PRICE		SALE PRICE
_____	120 ME	_____
_____	140 ME	_____
_____	120 OMC	_____
_____	140 OMC	_____

**SPECIFICATIONS:**

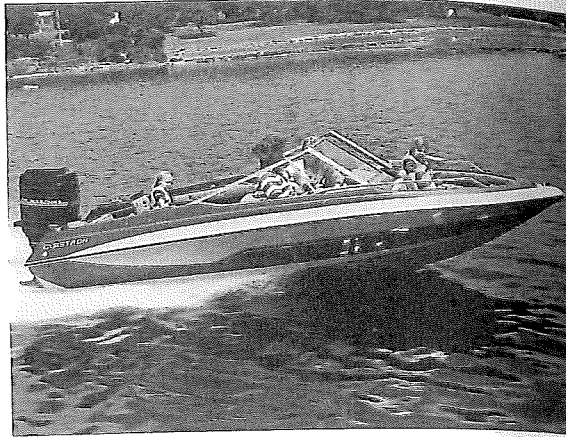
LOA	16' 4" - 5.0 m
Beam	79 1/2" - 2.0 m
Motor shaft length	N/A
Transom width	77 1/2" - 1.9 m
Fuel capacity	18 gallons
Depth	38 3/4" - 1.0 m
Approximate weight	880 lbs. - 399 kg
Maximum load	900 lbs. - 408 kg
Steering	Mechanical - Rack and Pinion
Glastron trailer	GA-16
Colors	Opaque Beige Terra Cotta and Tan

**STANDARD FEATURES:**

- Hand-laid fiberglass construction
- Two deep-foam, padded bucket seats
- In-floor ski storage
- Padded stern bench seat w/storage beneath
- Stern storage w/ice chests and cushioned lids
- Walk-through tempered glass windshield
- Anodized aluminum bow rails
- Stainless steel bow eye and ski eyes
- Running lights with removable light
- Side storage trays
- Chrome-plated hardware
- Plush carpet
- Glastron basic flotation
- B.I.A. certified
- Teak step pads
- Custom steering wheel
- In-handle trim control
- Soft top and boot cover
- Concealed electric horn
- Built-in 18 gallon fuel system
- Command Console with: Speedometer, Tachometer, Electric fuel gauge, Oil pressure light, Engine Temperature light, Voltmeter, Rocker switches for Bilge pump, Blower, Horn, Accessory Tilt, and Trim lights
- Convertible bench seat sun lounge

**OPTIONS:**

- Side and Stern Curtains
- Stern Boarding ladder
- Custom Mooring Cover



SSV - 167 \*

The sleek, open-bow SSV-167 offers the same stable, satin-smooth ride that has made Glastron's exclusive SSV-hull a major innovation in recent hull design. The extra roominess of the open bow and the roomy cockpit leave no doubt but what this is indeed a boat for the entire family's enjoyment.

\* Design Patent Pending

PACKAGE PRICE _____	LIST
Boat _____	_____
Motor _____ H.P.	_____
Trailer _____	_____
Accessories _____	_____
Total List _____	_____
Sale Price	_____
<b>22</b>	

**SPECIFICATIONS:**

LOA	16' 2 1/4" - 4.9 m
Beam	79 1/4" - 2.0 m
Motor shaft length	20" - 50.8 cm
Transom width	77 1/4" - 1.9 m
Fuel capacity	18 gallons
Depth	38 3/4" - 1.0 m
Approximate weight	860 lbs. - 391 kg
Maximum load	1290 lbs. - 585 kg
H.P. Rating	120 h.p.
Steering	Mechanical - Rack and Pinion
Glastron trailer	GA-16
Colors	Metalflake Blue Metalflake Rust

**STANDARD FEATURES:**

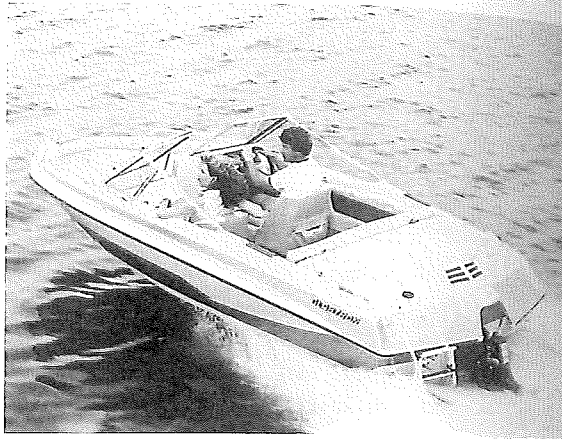
- Hand-laid fiberglass construction
- Back-to-back fold down lounge seats
- In-floor ski locker
- Side tray storage
- Walk-through tempered glass windshield
- Anodized aluminum bow rail
- Chrome-plated hardware
- Plush carpet
- Teak step pads
- Custom steering wheel
- Concealed electric horn
- Built-in 18 gallon fuel tank
- Stainless steel bow eye and ski eyes
- Soft top system with boot cover
- Cockpit courtesy light
- Running lights with removable stern light
- Foam-cushioned bow seating
- Built-in ice chest under bow seat
- Speedometer
- Tachometer
- Bilge pump
- Electric fuel gauge
- Level flotation
- B.I.A. certified

**OPTIONS:**

- Stern boarding ladder
- Tonneau bow cover
- Side and stern curtains
- Custom mooring cover

**PERFORMANCE:**

Optimum Performance Range 70 - 120 h.p.



SSV - 168 \*

Stow your skis in a built-in ski locker, stock the built-in ice chest, load the family in the roomy open-bow and spacious cockpit — and head this stern-drive powered SSV-168 into a world of adventure.

\*Design Patent Pending

LIST PRICE		SALE PRICE
_____	120 ME	_____
_____	140 ME	_____
_____	120 OMC	_____
_____	140 OMC	_____

**SPECIFICATIONS:**

LOA	16'4" - 5.0 m
Beam	79 1/2" - 2.0 m
Motor shaft length	N/A
Transom width	77 1/2" - 1.9 m
Fuel capacity	18 gallons
Depth	38 3/4" - 1.0 m
Approximate weight	880 lbs. - 399 kg
Maximum load	900 lbs. - 408 kg
Steering	Mechanical - Rack and Pinion
Glastron trailer	GA-16
Colors	Metalflake Beige

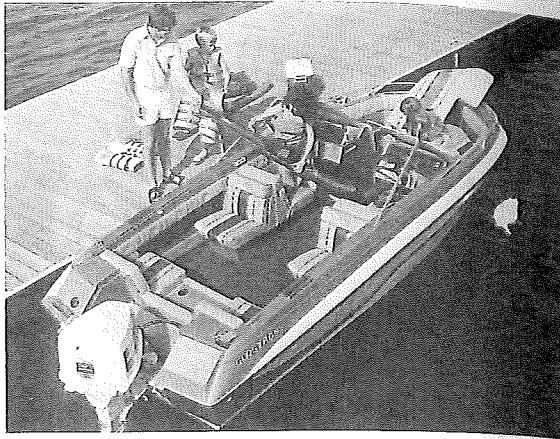
**STANDARD FEATURES:**

- Hand-laid fiberglass construction
- Two deep foam padded bucket seats
- In-floor ski locker
- Stern bench seat with storage beneath
- Stern storage with ice chest and cushion lids
- Side storage trays
- Walk-through tempered glass windshield
- Chrome-plated hardware
- Plush carpet
- B.I.A. certified
- Custom steering wheel
- In-handle trim control
- Soft top and boot cover
- Concealed electric horn
- Running lights with removable stern light
- Stern boarding ladder
- Command console with: speedometer, tachometer, electric fuel gauge, oil pressure light, engine temperature light, voltmeter, rocker switches for bilge pump blower, horn, accessory, tilt and trim lights
- Anodized aluminum bow rails
- Teak step pads
- Ice chest built-in under bow seats
- Stainless steel bow eye and ski eyes
- Built-in 18 gallon fuel system

**OPTIONS:**

- Tonneau Cover
- Side and Stern Curtains
- Custom Mooring Cover

SSV-176



SSV - 176

The SSV hull is setting the standard for excellence in performance and stability in the medium-sized boat world. "Super smooth", "super stable" and all the built-in features for family boating excitement. The outboard SSV-176 runs quiet in chop with an open bow that gives extra room for family and gear. Quick, quiet and a great all around performance outboard.

PACKAGE PRICE	LIST
Boat	_____
Motor _____ H.P.	_____
Trailer	_____
Accessories	_____
Total List	_____
Sale Price	_____

SPECIFICATIONS:

LOA	17' 1 1/2" - 5.0 m
Beam	83" - 2.1 m
Motor shaft length	20" - 50.8 cm
Transom width	79" - 2.0 m
Fuel capacity	18 gallons
Depth	46 1/4" - 1.2 m
Approximate weight	955 lbs. - 430 kg
Maximum load	1550 lbs. - 703 kg
H.P. Rating	140 h.p.
Steering	Mechanical - Rack and Pinion
Glastron trailer	G-17
Colors	Metalflake Silver & Burgundy Metalflake Rust

STANDARD FEATURES:

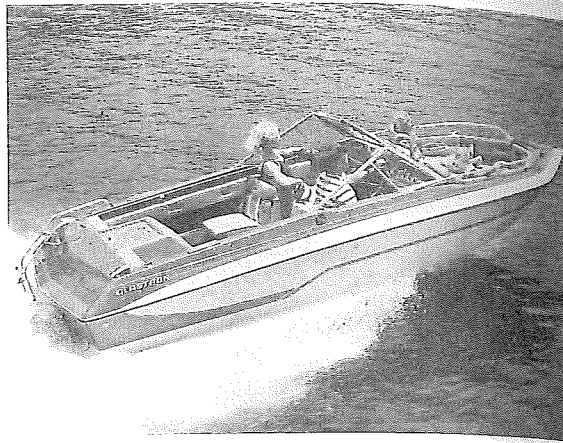
- Hand-laid fiberglass construction
- Two back to back lounge seats
- Ice chest under bow seat
- Lift up table between stern seats
- Bow locker with hinged door
- Storage under lounge and bow seats
- Walk-through tempered glass windshield
- Anodized aluminum bow rails
- Chrome-plated hardware
- Built-in 18 gallon fuel system
- Easy soft top with boot cover
- Running lights w/removable stern light
- Stainless steel bow eye and ski eyes
- Stern jump seats
- Side storage trays
- Custom steering wheel
- Rack and pinion steering
- Concealed electric horn
- Speedometer
- Tachometer
- Lockable glove box
- Teak step pads
- Level flotation
- In-floor ski locker
- B.I.A. certified
- Electric fuel gauge
- Bilge pump

OPTIONS:

- Stern boarding ladder
- Side and stern curtains
- Custom mooring cover

PERFORMANCE:

Optimum performance range	70 - 140 h.p.
Normal speed range	70 h.p. - 30-35 mph/48-56 kph 80 h.p. - 38-42 mph/61-67 kph 115 h.p. - 45-47 mph/72-75 kph 140 h.p. - 48-50 mph/76-80 kph



SSV - 177

An elegant 17-foot stern-drive with spacious interior and SSV performance. This deluxe all-around family SSV is smooth riding, easy handling, predictable and secure. Just the right size for trailering.

LIST PRICE		SALE PRICE
_____	OMC 140	_____
_____	Merc 140	_____
_____	Merc 470	_____

**SPECIFICATIONS:**

LOA	17' 1" - 5.2 m
Beam	83" - 2.1 m
Motor shaft length	N/A
Transom width	79" - 2.0 m
Fuel capacity	25 gallons
Depth	46 3/4" - 1.2 m
Approximate weight	1100 lbs. - 499 kg
Maximum load	1050 lbs. - 476 kg
Steering	Mechanical - Rack and Pinion
Glastron trailer	GA-17
Colors	Metalflake Rust

**STANDARD FEATURES:**

- Hand-laid fiberglass construction
  - Anodized aluminum bow rails
  - Built-in 25 gallon fuel system
  - Drinkholders in engine cover
  - Bow locker w/hinged door
  - Storage compartment under lounge seats
  - Ice chest under bow seat
  - Side storage trays
  - Walk-through tempered glass windshield
  - Easy soft top with boot cover
  - Running lights with removable stern light
  - Two back to back lounge seats
  - Two stern seats
- Command console with: speedometer, tachometer, electric fuel gauge, oil pressure light, engine temp. light, switches for bilge pump, blower, horn, accessory, tilt and trim, lights
  - Chrome-plated hardware
  - Plush carpet
  - Teak step pads
  - Custom steering wheel
  - In-handle trim control
  - Cockpit courtesy lights
  - Stern boarding ladder
  - B.I.A. certified
  - In-floor ski locker

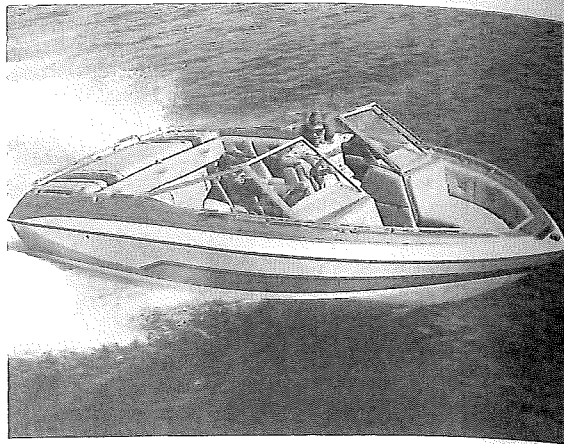
**OPTIONS:**

- Side and Aft curtains
- Tonneau cover
- Custom mooring cover

**PERFORMANCE:**

Normal speed range	OMC 140: 38-40 mph/60-64 kph
	Merc 140: 40-42 mph/64-67 kph
	Merc 470: 45-47 mph/72-75 kph





SX-180

This open bow SX-180 is a true performer, Super smooth, super stable, with economical 4 and V-6 stern-drive power. The new Bucket Lounge seating offers a whole new interior combination including a storable table for comfortable dining on board.

LIST PRICE		SALE PRICE
_____	470 ME	_____
_____	485 ME	_____
_____	V-6 OMC	_____

SX-180

**SPECIFICATIONS:**

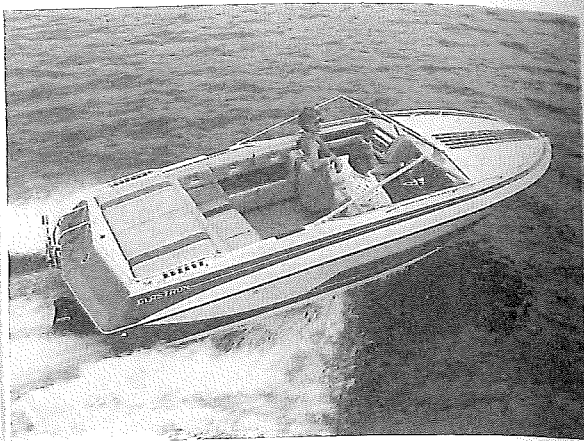
LOA	17' 6 3/8"
Beam	84 1/8" - 2.1 m
Motor shaft length	N/A
Transom width	79" - 2.0 m
Fuel capacity	23 gallons
Approximate weight	1200 lbs. - 544 kg
Maximum load	900 lbs. - 408 kg
Steering	Mechanical Rack and Pinion
Glastron trailer	GS-18
Colors	Metalflake Silver & Burgundy Metalflake Beige

**STANDARD FEATURES:**

Hand-laid fiberglass construction	Two new folding lounge bucket seats
Ice chest	Lockable glove box
Side storage trays	Chrome-plated hardware
Walk-through tempered glass windshield	Plush carpet
Custom steering wheel	Concealed electric horn
Built-in 23 gallon fuel system	S/S bow eye and ski eyes
Running lights w/ removable stern lights	Teak step pads
Stern boarding ladder	Command Console with: tachometer, electric fuel gauge, oil pressure light, engine temp. light, voltmeter, and rocker switches for bilge pump, blower, tilt and trim, accessory, horn and light
Bilge pump, bilge blower	
Cockpit courtesy lights	
In-handle trim control	
Easy-up soft top w/Boot cover	
In-floor ski storage	
Aft sun pad	B.I.A. certified

**OPTIONS:**

- Side and stern curtains
- Custom mooring cover
- Tonneau bow cover
- Stowable cockpit table



SSV-184

The closed Bow SSV-184 has style and performance for those cooler climates. Closed bow protection and SSV make this one of the best all weather boats.

LIST PRICE		SALE PRICE
_____	470-ME	_____
_____	485-ME	_____
_____	V-6 OMC	_____

**SPECIFICATIONS:**

LOA	17' 6 3/8"
Beam	84 1/8" - 2.1 m
Motor shaft length	N/A
Transom width	79" - 2.0 m
Fuel capacity	23 gallons
Approximate weight	1200 lbs. - 544 kg
Maximum load	900 lbs. - 408 kg
Steering	Mechanical - Rack and Pinion
Glastron trailer	GS - 18
Colors	Opaque Blue Metalflake Beige

**STANDARD FEATURES:**

Hand-laid fiberglass construction	Two new folding lounge bucket seats
Ice chest	Lockable glove box
B.I.A. certified	Chrome-plated hardware
Side storage trays	Plush carpet
Walk-through tempered glass windshield	Concealed electric horn
Custom steering wheel	S/S bow eye and ski eyes
Built-in 23 gallon fuel system	Teak step pads
Running lights w/ removable stern lights	Command console with: tachometer, electric fuel gauge, oil pressure light, engine temp. light, voltmeter, and rocker switches for bilge pump, blower, tilt and trim accessory, horn and lights
Stern boarding ladder	Stowable cockpit table
Bilge pump, bilge blower	Aft sun pad
Cockpit courtsey lights	
In-handle trim control	
Easy up soft top w/Boot cover	
In-floor ski storage	

**OPTIONS:**

Side and stern curtains	Custom mooring cover
Stowable cockpit table	



SX - 190

Limited Edition 25th Anniversary Power Boat Award winning model SX-190 has sport boat styling with family features. This outstanding performer's features include digital clock, stereo and plush interior that match its all-around good looks. The digital instrument dash completes this exceptional Silver Anniversary edition.

LIST PRICE		SALE PRICE
_____	260 OMC	_____
_____	Merc 228	_____
_____	Merc 260	_____

**SPECIFICATIONS**

LOA	18' 8" - 5.7 m
Beam	88 1/2" - 2.24 m
Motor shaft length	N/A
Transom width	85 1/2" - 2.17 m
Fuel capacity	28 gallons
Depth	42-1/8" - 1.0 m
Approximate weight	1250 lbs. - 567 kg
Maximum load	1200 lbs. - 644 kg
Steering	Power steering (where applicable)

Glastron trailer Colors

GS-19  
Metalflake Silver & Burgundy

**STANDARD FEATURES:**

- Hand-laid fiberglass construction
- Anodized aluminum bow rails
- Power steering (where applicable)
- Ski storage under bench set
- Chrome-plated hardware
- Plush carpet
- S/S bow eye and ski eyes
- Soft top system w/boot cover
- Running lights w/removable stern light
- Rack and pinion steering
- Walk-through tempered glass-windshield
- Open bow w/cushioned seating
- Bench and bucket seating
- Aft sun lounge
- AM/FM stereo system w/ two speakers
- Built-in 28 gallon fuel system

- Command Console with: digital speedometer, tachometer, fuel read out, oil pressure & voltmeter, dash warning lights
- Switch panel under control handle with: rocker switches for bilge pump, blower, horn, lights, accessories
- Teak step pads
- Custom steering wheel
- In-handle trim control
- Cockpit courtesy lights
- Lockable glove box
- Bow storage compartment
- Ice chest in floor
- Concealed electric horn
- Port mounted digital clock
- Ashtrays port & starboard
- Cig. lighter & map light

**OPTIONS:**

- Side and aft curtains
- Tonneau cover
- Custom mooring cover



V-192

The V-192 is the most elegant outboard deep vee in its class. Rated for V-6 power, this big family performer smooths out the roughest of seas. Completely appointed with features for every boating requirement, this 19-footer leads the outboard family class.

PACKAGE PRICE	LIST
Boat	_____
Motor _____ H.P.	_____
Trailer	_____
Accessories	_____
Total List	_____
Sale Price	_____

**SPECIFICATIONS:**

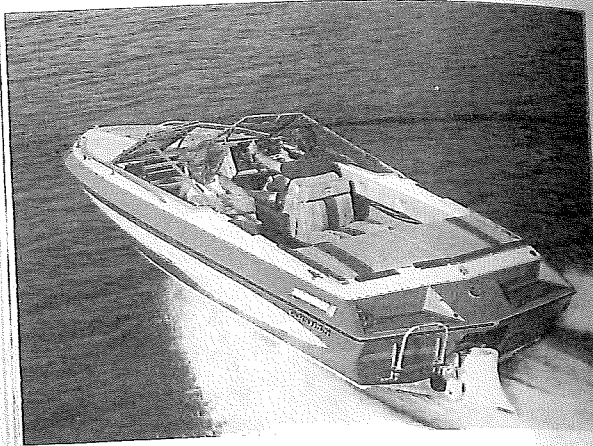
LOA	18' 9" - 5.7 m
Beam	87" - 2.2 m
Motor shaft length	25" - 63.5 cm
Transom wisth	83½" - 2.1 m
Fuel capacity	25 gallons
Depth	48½" - 1.2 m
Approximate weight	1330 lbs. 603 kg
Maximum load	1850 lbs. - 839 kg
H.P. Rating	175 h.p.
Steering	Mechanical - Rack and Pinion
Glastron trailer	G-19
Colors	Opaque Terra Cotta & Tan

**STANDARD FEATURES:**

Hand-laid fiberglass construction	Two back to back lounge seats
Wrap-around bow seats, back rests, bolsters	Bow locker with hinged door
Storage under lounge and bow seats	Walk-through tempered glass windshield
Anodized aluminum bow rails	Self-draining bow compartment
Deck mounted electric horn	Built-in 25 gal. fuel tank with electric gauge
Table with drinkholders between stern seats	Easy-up soft top system with boot cover
Running lights with removable stern light	Two stern seats
Lockable glove box	Ice chest
In-floor ski storage	Side tray storage
Plush carpet	Chrome-plated hardware
Custom steering wheel	Teak step pads
S/S bow eye and ski eyes	Rack and pinion steering
Level flotation	Cockpit courtesy lights
Speedometer	B.I.A. certified
Bilge pump	Tachometer

**OPTIONS:**

- Stern boarding ladder
- Side and stern curtains
- Tonneau cover
- Custom mooring cover



SSV-194

This closed-bow, plush-interior 19 footer has the ingredients to make it a big winner in 1982. The smooth ride and outstanding performance set the SSV-194 apart from the crowd.

LIST PRICE

\_\_\_\_\_

\_\_\_\_\_

\_\_\_\_\_

\_\_\_\_\_

OMC-V6

OMC-260

Merc 260

Merc 228

SALE PRICE

\_\_\_\_\_

\_\_\_\_\_

\_\_\_\_\_

\_\_\_\_\_

SPECIFICATIONS:

LOA  
Beam  
Motor shaft length  
Transom width  
Fuel capacity  
Depth  
Approximate weight  
Maximum load  
Steering

18' 8" - 5.7 m  
88 1/2" - 2.24 m  
N/A  
85 1/2" - 2.17 m  
25 gallons  
42 1/4" - 1.0 m  
1230 lbs. - 558 kg  
1200 lbs. - 544 kg  
Power steering (where applicable)  
GS-19  
Opaque Blue  
Opaque Beige

Glastron trailer  
Colors

STANDARD FEATURES:

Hand-laid fiberglass construction  
Power steering (where applicable)  
Aft jump seats  
Port convenience strap  
AM/FM cassette stereo system with two speakers  
Chrome-plated hardware  
Plush carpet  
Teak step pads  
Custom steering wheel  
In-handle trim control  
S/S bow eye and ski eyes  
Cockpit courtesy light  
Lockable glove box  
Sun lounge pad at stern  
Ash trays port and starboard  
Cig. lighter or map light  
Concealed electric horn

In-floor ski storage  
Anodized aluminum bow rail  
Soft top system with boot cover  
Built-in 25 gallon fuel system  
Command console with: speedometer, tachometer, electric fuel gauge, oil pressure gauge, engine temp. gauge, voltmeter, dash warning lights  
Lighted switch panel under control handle with rocker switches for bilge blower, pump, accessory, horn, lights  
Fold-out lounge seats

OPTIONS:

Side and aft curtains  
Custom mooring cover



SSV-196

A perfect combination of space, performance and comfort, the SSV-196 has a smooth running hull and open bow seating for optimum family usage. Sporty metallic gel coat attracts attention wherever it goes. Comfort, convenience and performance highlight this big family stern drive.

LIST PRICE

\_\_\_\_\_  
 \_\_\_\_\_  
 \_\_\_\_\_  
 \_\_\_\_\_

OMC 260  
 OMC V-6  
 Merc 228  
 Merc 260

SALE PRICE

\_\_\_\_\_  
 \_\_\_\_\_  
 \_\_\_\_\_  
 \_\_\_\_\_

SPECIFICATIONS:

LOA 18' 8"  
 Beam 88 1/4"  
 Motor shaft length N/A  
 Transom width 85 1/2"  
 Fuel capacity 25 gallons  
 Depth 42 1/2"  
 Approximate weight 1250 lbs.  
 Maximum load 1200 lbs. - 544 kg  
 Steering Power steering  
 Glastron trailer GS-19  
 Colors Metalflake Beige / cream

STANDARD FEATURES:

Hand-laid fiberglass construction  
 Walk-through tempered glass windshield  
 Rack and pinion steering  
 Soft top system with boot  
 Running lights w/removable stern light  
 Anodized aluminum bow  
 Two fold out lounge seats  
 Built-in 25 gallon fuel system  
 In-handle trim control  
 B.I.A. certified  
 Custom steering wheel  
 Cockpit courtesy lights  
 AM/FM stereo radio & cassette player with two speakers  
 Ash trays port & starboard

*beige interior*  
 Command Console with digital speedometer, tachometer, fuel read out, oil pressure & voltmeter, dash warning lights  
 Switch panel under control handle with: rocker switches for bilge pump, blower, horn, lights, accessories  
 Chrome-plated hardware  
 Ice chest under bow seat  
 Side tray storage  
 Side tray storage  
 In-floor ski storage  
 Lockable glove box  
 Plush carpet  
 S/S bow eye and ski eyes  
 Concealed electric horn  
 Cig. lighter or map light

OPTIONS:

Side and stern curtains  
 Custom mooring cover

2



V-197

All new Trailer Cruiser with family appeal and fuel efficient stern drive power. The ideal weekend hideway.

LIST PRICE

\_\_\_\_\_

\_\_\_\_\_

\_\_\_\_\_

\_\_\_\_\_

140 me

470 me

485 me

140 OMC

SALE PRICE

\_\_\_\_\_

\_\_\_\_\_

\_\_\_\_\_

\_\_\_\_\_

SPECIFICATIONS:

- LOA
- Beam
- Transom width
- Depth
- Approximate weight
- Maximum load
- Steering
- Glastron trailer
- Colors

- 18' 8" 5.7 m
- 88 1/2" 2.24 m
- 85 1/2" 2.17 m
- 42 1/4" - 1.0 m
- 1200 lbs.
- 1200 lbs. 544 kg
- Mechanical
- GS-19
- Opaque Blue
- Opaque Beige

STANDARD FEATURES:

- Hand-laid fiberglass construction
- Two helmsman Chairs w/swivels
- Aft jump seats convert to sun pad
- Chrome plated hardware
- Plush carpet
- Teak step pads
- Stainless steel steering wheel
- In-handle trim control
- S/S bow eye and ski eyes
- Cockpit courtesy light
- Lockable cabin door
- Vee berth in cabin
- Ashtrays port & starboard
- Cig. lighter or map light
- Sink & 5 gallon water tank

OPTIONS:

- Side & stern curtains
- Portable Head

- Built-in 33 gallon fuel system
- Soft top system with boot cover
- Ice chest in cabin
- Anchor locker
- Stern boarding ladder
- Concealed electric horn
- Bilge pump & blower
- Anodized Aluminum bow rail
- Command Console with: speedometer, tachometer, electric fuel gauge, oil pressure gauge, engine temp. gauge, voltmeter
- Galley with alcohol stove

Custom mooring cover



V-217

The ideal party boat with an entertainment center on the port bulkhead. The cockpit offers a friendly meeting place for your friends. The steady performing 21-foot hull makes this one an ideal choice for that crowd to party in.

LIST PRICE		SALE PRICE
_____	Merc 228	_____
_____	Merc 260	_____
_____	OMC V6	_____
_____	OMC 260	_____

**SPECIFICATIONS:**

LOA	20' 6½" - 6.3 m
Beam	96" - 2.4 m
Motor shaft length	N/A
Transom width	91½" - 2.3 m
Fuel capacity	47 gallons
Depth	59¾" - 1.5 m
Approximate weight	2320 lbs. - 1052 kg
Maximum load	1500 lbs. - 681 kg
Steering	Power steering
Glastron trailer	G-21
Colors	Opaque Beige

**STANDARD FEATURES:**

- Hand-laid fiberglass construction
- Bold print upholstery
- Two stern jump seats convert to sun lounge
- Side storage tray
- Stainless steel steering wheel
- Built-in 47 gallon fuel system
- Stainless steel bow rail
- Soft top system with boot cover
- Port side sink and storage compartment
- Deluxe cabin with 6 foot vee berths
- Folding lockable door to cabin
- Tinted skylight bow hatch
- High-low seating in cuddy cabin
- In-handle trim control
- Command console with: speedometer, tachometer, electric fuel gauge, oil pressure light, engine temp. light, voltmeter
- rocker switches for bilge pump, blower, horn, accessory, tilt trim, nav. lights
- Teak swim platform with ladder
- Stainless steel bow eye and ski eyes
- Anchor line guide forward
- Plush carpet
- Foam flotation

Teak step pads  
B.I.A. certified  
Electric horn

**OPTIONS:**

- Hydraulic boat levelers
- Windshield wipers
- Compass kit
- Portable head
- Side and aft curtains
- Custom mooring cover



HPV-155



HPV-155

New for 1982 this compact Fishing Machine with trailer will take you to your favorite spot in comfort.

PACKAGE PRICE _____	LIST
Boat	_____
Motor _____ H.P.	_____
Trailer	_____
Accessories	_____
Total List Price	_____
Sale Price	_____

**SPECIFICATIONS:**

LOA	15'5" 4.7 m
Beam	76 1/8" 1.97 m
Transom width	73 5/8" 1.89 m
Motor shaft length	20" 50.8 cm
Fuel capacity	N/A
Depth	30" 76 m
Approximate weight	750 lbs.
Maximum load	890 lbs.
H.P. Rating	90 h.p.
Steering	Mechanical
Glastron trailer	GA-15
Colors	Metalflake Blue Metalflake Silver & Burgandy

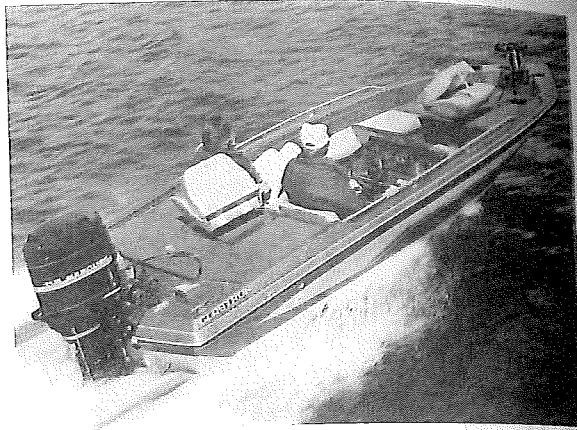
**STANDARD FEATURES:**

- Hand-laid fiberglass construction
- Two removable spring mounted 360° swiveling fishing seats
- Elevated casting platforms fore & aft
- Storage under forward casting platform
- Circulated live well
- Reinforced foredeck for mounting electric trolling motor
- Running lights with removable stern light
- Custom steering wheel
- Prewired bow panel for trolling motor
- Rod holders on port side
- Stern battery and portable gas tank
- Storage compartment
- Bilge pump/level flotation
- B.I.A. certified

**OPTIONS:**

- Tinted or clear plexiglass sleek windscreen
- Custom mooring cover

HPV-160



HPV-160

A superb fishing boat designed for speed, stability and a soft ride, with room for all your gear.

PACKAGE PRICE _____	LIST
Boat _____	_____
Motor _____ H.P.	_____
Trailer _____	_____
Accessories _____	_____
Total List _____	_____
Sale Price _____	_____

**SPECIFICATIONS:**

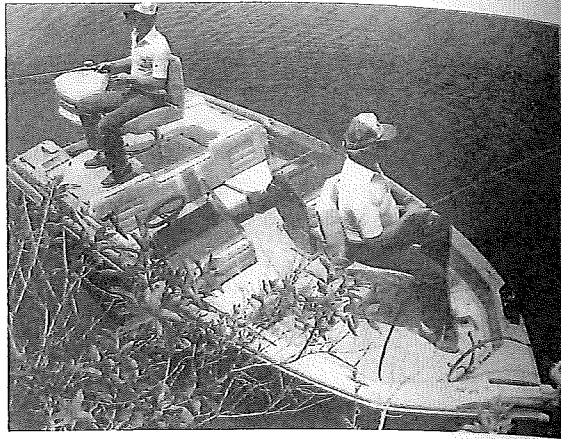
LOA	16' 2 1/4" - 5.0 m
Beam	79 1/4" - 2.0 m
Motor shaft length	20" - 50.8 m
Transom width	77 1/4" - 2.0 m
Fuel capacity	18 gallons
Depth	32" - .81 m
Approximate weight	925 lbs. - 420 kg
Maximum load	1075 lbs. - 488 kg
H.P. Rating	120 h.p.
Steering	Mechanical
Glastron trailer	GA-16
Colors	Metalflake Blue Metalflake Rust

**STANDARD FEATURES:**

- Hand-laid fiberglass construction
- 18-gallon fuel tank
- Two folding removable spring-mounted seats that swivel 360°, two bow sockets for relocation seats
- Bench between helmsman and passenger seats, storage below w/deep molded storage trays
- Elevated casting platforms fore and aft, storage below, storage forward w/removable storage trays
- Two circulating live wells double as ice chests
- Reinforced foredeck for mounting electric trolling motor
- Running lights with removable stern light
- Storage compartment forward of helmsmans console
- Helmsman's custom console: soft grip competition steering wheel, mechanical steering, electric fuel gauge, switches for livewell pump, accessories, inland lighting, bilge pump
- Custom bow accessory panel: pre-wired trolling motor outlet w/12/24 volt switch, molded plug w/two connections, engine tilt switch, volt gauge w/battery test switch, charge switch, cigar lighter w/chart light
- Lockable port rod and ski locker
- Flush-mounted lift handles on bow & aft compartments
- Stern battery/storage compartment with removable storage trays
- Plush carpet
- Bilge pump
- Speedometer
- Level flotation
- Metalflake finish
- Tachometer

**OPTIONS:**

- Tinted or clear plexiglass sleek windscreen(s)
- Tinted or clear plexiglass upright and windscreen (s)
- Boarding ladder
- Custom mooring cover



HPV-165

This 16-footer combination fish-or-ski is versatile enough to meet all the demands of a boating family. An added console and padded bow seating makes it a fishing boat useful enough for the family. With a rating up to 120, it has the power to meet all your skiing/fishing needs.

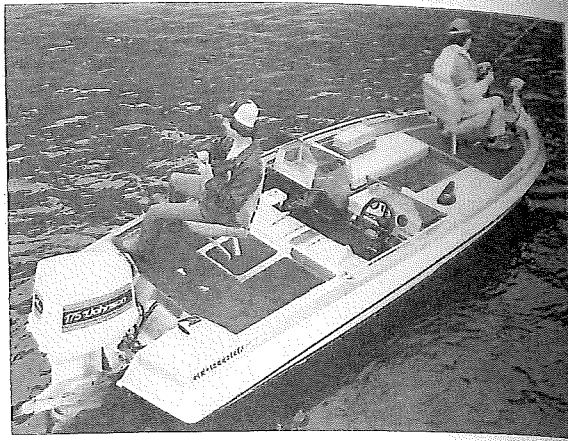
PACKAGE PRICE _____	LIST
Boat _____	_____
Motor _____ H.P.	_____
Trailer _____	_____
Accessories _____	_____
Total List _____	_____
Sale Price _____	_____

HPV-165

SPECIFICATIONS:	
LOA	16' 2 1/4" - 5.0 m
Beam	79 1/2" - 2.0 m
Motor shaft length	20" - 5.0 cm
Transom width	77 1/4" - 2.0 m
Fuel capacity	18 gallons
Depth	32" - 81 m
Approximate weight	950 lbs. - 431 kg
Maximum load	1075 lbs. - 488 kg
H.P. Rating	120 h.p.
Steering	Mechanical
Glastron trailer	GA-16
Colors	Metalflake Beige Metalflake Blue

- STANDARD FEATURES:**
- Two folding, removable spring-mounted seats, swivel 360°
  - In-floor ski locker
  - Bench seat between helmsmans and passenger seats, storage below
  - Elevated casting platforms fore & aft, storage below
  - 18 gallon fuel tank (in floor)
  - Two circulating livewells double as ice chests
  - Reinforced foredeck for mounting electric trolling motor
  - Helmsman custom console: Softgrip competition steering wheel, mechanical steering, electric fuel gauge, switches for livewell, pump, accessories, inland lighting and bilge pump
  - Storage compartment forward of helmsman console
  - Custom bow accessory panel: pre-wired trolling motor outlet w/12/24 volt switch, molded plug with two connections, engine tilt switch, volt gauge, w/battery test switch, charge switch, cigar lighter w/chart light
  - Lockable port rod and ski locker w/cushioned lid
  - Marine hardware, bow & ski eyes, handrails
  - Stern battery/storage compartment w/removable storage trays
  - Running lights w/removable stern light
  - Twin consoles w/storage tray in passenger console
  - Deep foam-padded forward bench seats w/backrests
  - Metal flake finish
  - Bilge pump
  - Speedometer
  - Level flotation
  - B.I.A. certified
  - Tachometer

- OPTIONS:**
- Tinted or clear plexiglass sleek windscreen (s)
  - Tinted or clear plexiglass upright windscreen(s)
  - Boarding ladder
  - Custom mooring cover



HPV-175

Enjoy the best of both worlds with this combination fish-or-ski. Go fishing in the morning, remove the fishing seats in the afternoon, and enjoy skiing at its best. Roomy, comfortable and powerful with up to 175 horsepower.

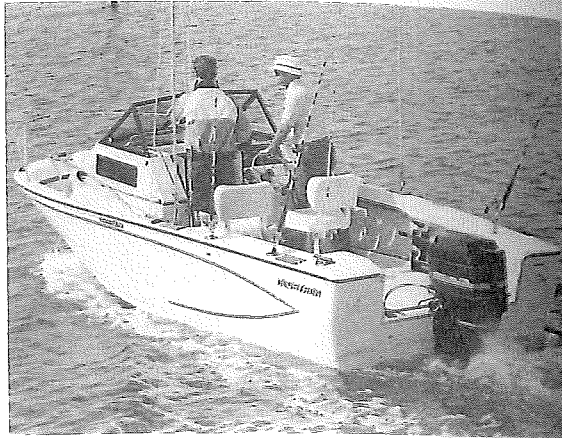
PACKAGE PRICE _____	LIST
Boat _____	_____
Motor _____ H.P.	_____
Trailer _____	_____
Accessories _____	_____
Total List _____	_____
Sale Price _____	_____

HPV-175

SPECIFICATIONS:	
LOA	17' 9 1/2" - 5.4 m
Beam	91 1/4" - 2.3 m
Motor shaft length	20" - 50.8 cm
Transom width	90" - 2.2 m
Fuel capacity	25 gallons
Depth	35 3/4" - 91 cm
Approximate weight	1115 lbs. - 507 kg
Maximum load	1180 lbs. - 507 kg
H.P. Rating	175 h.p.
Steering	Mechanical
Glastron trailer	H-17
Colors	Metalflake silver Metalflake rust

- STANDARD FEATURES:**
- Hand-laid fiberglass construction
  - 25 gallon fuel tank (in floor)
  - Two folding removable spring mounted seats, swivel 360° (2-position front seat mount)
  - Bench seat between helmsman and passenger seats, storage below in deep molded storage trays
  - Elevated casting platform fore and aft, storage below
  - Two circulating livewells double as ice chests
  - Reinforced foredeck for mounting electric trolling motor
  - Helmsman custom console: soft grip competition steering wheel, electric fuel gauge, tachometer, speedometer, switches for livewell pump, bilge pump, accessories and inland lighting
  - Custom bow accessory panel: pre-wired trolling motor w/12/24 volt switch, molded plug w/two connections, switch, cigar lighter w/chart light
  - Two lockable rod and ski lockers w/cushioned lid
  - Marine hardware, bow and ski eyes, handrail
  - Stern battery/storage compartment with removable storage trays
  - Running lights with removable stern light
  - 45-quart ice chest built into floor
  - Twin custom consoles w/storage tray in passenger console
  - Metalflake finish
  - Level flotation
  - Bilge pump
  - B.I.A. certified

- OPTIONS:**
- Tinted or clear plexiglass sleek windscreen(s)
  - Tinted or clear plexiglass upright windscreen(s)
  - Boarding ladder
  - Custom mooring cover



V - 216

A "best of both worlds" fishing boat with walk-around convenience, and a spacious cuddy cabin. Console/cabin with windshield gives running protection from weather plus a cabin for enclosed sleeping or storage. All the Sea Fury features in a super outboard walk-around package.

PACKAGE PRICE \_\_\_\_\_ LIST

Boat	_____
Motor _____ H.P.	_____
Trailer	_____
Accessories	_____
Total List	_____
Sale Price	_____

**SPECIFICATIONS:**

LOA	20' 7" -6.3 m
Beam	96" -2.4 m
Motor shaft length	Twin -20" -50.8 cm
	Single -25" -63.5 cm
Transom width	91½" -2.3 m
Fuel capacity	75 gallons
Depth	64¼" -1.6 m
Approximate weight	2030 lbs. -921 kg
Maximum load	220 lbs. -1034 kg
H.P. Rating	220 h.p.
Steering	Rack and pinion
Glastron trailer	G-21
Colors	Beige

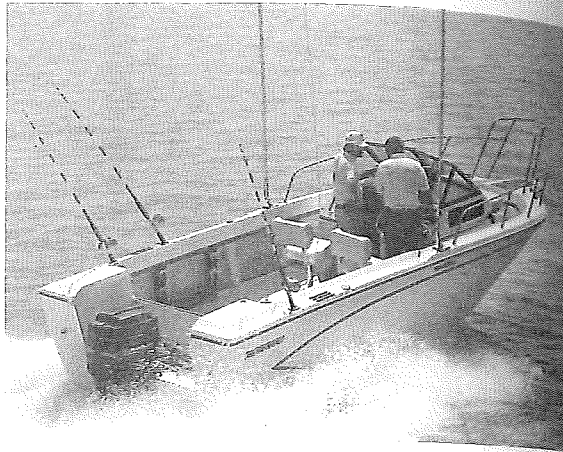
**STANDARD FEATURES:**

- Padded seat forward of center cabin w/storage beneath for soft top
- S/S bow rail with fittings
- Corrosion-resistant hardware
- Enclosed center cabin with: cushioned vee berths and in-bulkhead cabinets, space for optional head, sliding cabin windows, folding cabin door with lockable hatch cover, ample storage
- Self-bailing cockpit with fiberglass liner
- 75-gallon built-in fuel tank w/direct reading gauge
- Large in-floor fishwells/baitwells w/fiberglass lids
- Teak rod racks under gunwales
- Removable splashwell transom board
- Removable battery access panel in splashwell
- Non-skid 14" walkway around center cabin
- Hand-laid fiberglass construction
- Tempered glass tinted windshield
- High-volume bilge pump w/automatic float switch
- Non-skid deck and floor
- Recessed rod holders
- Custom instrument panel
- Foam flotation
- Soft top w/boot cover
- Cabin lights

- Two helmsman chairs
- S/S steering wheel
- S/S bow and ski eyes
- B.I.A. certified

**OPTIONS:**

- Deluxe package: speedometer, electric fuel gauge, hour meter
- Helm enclosure canvas
- Custom mooring cover
- Compass, windshield wiper package
- Electric horn
- Portable head



V-243

Fishing from the new walk-around V-243 Sea Fury is a true pleasure. There's easy access to all parts of the boat with a spacious cruiser for getting out of the weather. Storage is found through-out including below-deck bait and fishwells. The V-243 takes power to 280 h.p. and is easily trailered to your favorite fishing spot. From there it's a smooth run with the deep vee hull to a day of fun.

PACKAGE PRICE _____	LIST
Boat _____	_____
Motor _____ H.P.	_____
Trailer _____	_____
Accessories _____	_____
Total List _____	_____
Sale Price _____	_____

V-243

**SPECIFICATIONS:**

LOA	24' 4" - 7.4 m
Beam	96" - 2.4 m
Motor shaft length	Twin -20" - 50.8 cm Single - 25" - 63.5 cm
Transom width	94 1/4" - 2.4 m
Fuel capacity	103 gallons
Depth	69 1/4" - 1.8 m
Approximate weight	2650 lbs. - 1202 kg
Maximum load	2280 lbs. - 1034 kg
H.P. Rating	280 h.p.
Steering	Rack and pinion
Glastron trailer	G-24
Colors	Beige

**STANDARD FEATURES:**

- Padded seat forward of center cabin with storage beneath for soft top
  - Stainless steel bow rail with fittings
  - Corrosion resistant hardware
  - Enclosed center cabin with cushioned vee berths and in-bulk-head cabinets, space for optional head, sliding cabin windows, folding cabin door with lockable hatch cover, ample storage
  - Self-bailing cockpit w/fiberglass liner
  - 103-gallon built-in fuel tank w/direct reading gauge
  - Large in-floor fishwells/baitwells w/ fiberglass lids
  - Hinged splashwell transom deflector
  - Stern storage compartments
  - Non-skid 14" walk-around center cabin
  - Hand-laid fiberglass construction
  - Tempered glass tinted windshield
  - High volume bilge pump w/automatic float switch
  - International running lights
  - Bow pulpit
  - Hauser fittings in aft corners
  - Two helmsman chairs
  - Foam flotation
  - Recessed rod holders
  - Non-skid deck and floor
  - S/S steering wheel
  - Custom instrument panel
  - B.I.A. certified
  - Teak step pads
  - S/S bow and ski eyes
- OPTIONS:**
- Deluxe package: speedometer
  - hour meter, electric fuel gauge
  - Electric horn
  - Custom mooring cover
  - Windshield wiper, compass package
  - Helm enclosed canvas
  - Portable head



C-500  
Metric Series

Here's 16 feet of pure outboard performance. Exciting, quick and strong. A spacious 16 with a brilliant metalflake finish that will make heads turn.

PACKAGE PRICE _____	LIST
Boat	_____
Motor _____ H.P.	_____
Trailer	_____
Accessories	_____
Total List	_____
Sale Price	_____

**SPECIFICATIONS:**

LOA	16'8" - 5.1 m
Beam	78½" - 2.0 m
Motor shaft length	20" - 50.8 cm
Transom width	77" - 1.9 m
Depth	32" - .81 m
Approximate weight	720 lbs. - 327 kg
Maximum load	1200 lbs. - 562 kg
H.P. Rating	125 h.p.
Steering	Mechanical
Glastron trailer	CA-16
Colors	Metalflake Cashmere and Cream Red metallic

**STANDARD FEATURES:**

- Hand-laid fiberglass construction
- Two foam-padded bucket seats
- Padded stern bench with storage beneath
- Storage tray built into dash
- Boarding steps built into stern
- Custom sport wheel
- Competition metric series dash
- Built-in 18 gallon fuel system with electric fuel gauge
- Bow eye and ski eyes
- Running lights with removable stern light
- Positive foam flotation
- B.I.A. certified
- Deep plush marine carpet
- Concealed electric horn
- Contoured tinted plexiglass windscreen
- Speedometer
- Stern rails
- Bow ski locker
- Lockable glove box

**OPTIONS:**

- Custom mooring cover

**PERFORMANCE:**

- Optimum performance range 70 - 125 h.p.
- Normal speed range 85-100 h.p. - 43-45 mph/68-72 kph
- 115-125 h.p. - 47-51 mph/76-82 kph

C-512



C-512  
Metric Series

A sizzling 16' sterndrive built for the performance buff. Light and easily trailered behind most cars, this super sleek sport boat is nothing but a spartan on gas. Grab the wheel of this, our smallest sterndrive, and fly.

LIST PRICE

\_\_\_\_\_  
\_\_\_\_\_

OMC 140

Merc 140

SALE PRICE

\_\_\_\_\_  
\_\_\_\_\_

**SPECIFICATIONS:**  
LOA  
Beam  
Transom width  
Depth  
Approximate weight  
Maximum load  
Steering  
Glastron trailer  
Colors

16' 9" - 5.1 m  
78½" - 2.0 m  
78¼" - 1.9 m  
32" - .81 m  
640 lbs. - 204 kg  
850 lbs. - 385 kg  
Mechanical  
CA-16  
Metalflake Blue  
on Blue

**STANDARD FEATURES:**

Hand-laid fiberglass construction  
Two foam-padded bucket seats  
Padded stern bench with storage beneath  
Storage tray built into dash  
Boarding steps built into stern  
Stern rails  
Custom sport wheel  
Competition Metric Series dash  
Built-in 18 gallon fuel system w/electric fuel gauge  
Bow eye and ski eyes  
Running lights with removable stern light  
Positive foam flotation  
B.I.A. certified  
Contoured tinted plexiglass windscreen  
Speedometer  
Concealed electric horn  
Deep plush marine carpet  
Bilge pump and Bilge blower  
Tachometer  
In-handle trim control  
Bow ski locker  
Lockable glove box

**OPTIONS:**

Custom mooring cover

**PERFORMANCE:**

Normal speed range Merc 140: 44-47 mph/70-75 kph  
OMC 140: 47-50 mph/76-82 kph



C-535



C-535

The champion 17 outboard with class and performance. Strong out of the hole, smooth on the top, elegant throughout. Name your pleasure.

PACKAGE PRICE _____	LIST
Boat _____	_____
Motor _____ H.P.	_____
Trailer _____	_____
Accessories _____	_____
Total list _____	_____
Sale price _____	_____

**SPECIFICATIONS:**

- LOA
- Beam
- Transom width
- Depth
- Approximate weight
- Maximum load
- H.P. Rating
- Steering
- Glastron trailer
- Colors

- 17' 7" - 5.4 m
- 78" - 2.0 m
- 77" - 1.9 m
- 34½" - .81 m
- 875 lbs. - 397 kg
- 1245 lbs. - 565 kg
- 140 h.p.
- Mechanical
- C-17
- Amber metallic and buff
- Metalflake blue on blue

**STANDARD FEATURES:**

- Hand-laid fiberglass construction
- Two deep foam-padded bucket seats
- Padded stern bench
- Two stern storage compartments with padded covers
- Contoured tinted plexiglass windscreen
- Chrome-plated hardware
- Deep plush marine carpet
- Concealed electric horn
- Built-in 18 gallon fuel system
- Running lights w/removable stern light
- Custom instrumentation: speedometer, electric fuel gauge
- Grab bar
- Custom sport wheel
- Aft deck storage compartment/ice chest
- Stern rails
- Bow eye and ski eyes
- B.I.A. certified
- Lockable glove box

**OPTIONS:**

- Custom mooring cover



C - 537

Exciting styling, and a more efficient hull design to get you there fast with a minimum of power and energy. Destined to become the trend setter in performance sportboats for the 1980's.

LIST PRICE		SALE PRICE
_____	Merc 470	_____
_____	Trailers	_____
_____	Accessories	_____
	Package price \$	_____

**SPECIFICATIONS:**

17' 6 1/4" - 5.3 m  
 78" - 2.0 m  
 77" - 1.9 m  
 32" - .81 m  
 752 lbs. - 355 kg  
 900 lbs. - 408 kg  
 Mechanical  
 C-17  
 Metalflake Cashmere & Cream  
 Red Metallic

**STANDARD FEATURES:**

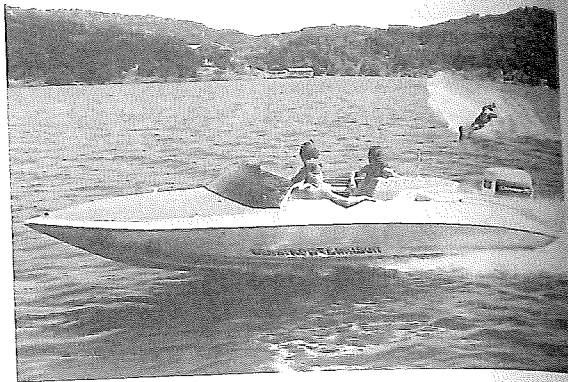
- Hand-laid fiberglass construction
- Two foam padded bucket seats
- Padded stern bench with storage beneath
- Storage tray built into dash
- Boarding steps built into stern
- Stern rails
- Custom sport wheel
- Competition Metric Series dash
- Built-in 18 gallon fuel system w/electric fuel gauge
- Bow eye and ski eyes
- Running lights with removable stern light
- Positive foam flotation
- B.I.A. certified
- Contoured tinted plexiglass windscreen
- New accent graphics
- Concealed electric horn
- Deep plush marine carpet
- Stainless steel cleaver propeller
- Speedometer
- Tachometer
- Bilge pump and bilge blower
- Forward ski locker
- Lockable glove box

**OPTIONS:**

- Custom mooring cover

**PERFORMANCE:**

Normal speed range Merc 470: 54-59 mph/87-95 kph



### SKI MACHINE

The ultimate ski boat for recreational or tournament water skiers. Designed for single outboard power, the Ski Machine delivers the kind of performance every skier needs and enjoys, whether it be slalom, trick, jumping, barefooting, or just plain recreation, there's no finer town boat available.

PACKAGE PRICE _____	LIST
Boat	_____
Motor _____ H.P.	_____
Trailer	_____
Accessories	_____
Total list	_____
Sale price	_____

### SKI MACHINE *CVX 20*

#### SPECIFICATIONS:

LOA  
Beam  
Motor shaft length  
Transom width  
Depth  
Approximate weight  
Maximum load  
H.P. Rating  
Steering  
Colors

20'3" - 6.3 m  
90 1/4" - 2.2 m  
20" - 50.8 cm  
84 1/4" - 2.2 m  
37" - .90 m  
1050 lbs. - 477 kg  
1515 lbs. - 689 kg  
200 h.p.  
Dual cable  
Metalflake cashmere and cream  
Metalflake blue on blue

#### STANDARD FEATURES:

Hand-laid fiberglass construction  
Deep foam-padded bucket seat for driver  
Two-person stern facing observer bench and twin rear jump seats with storage beneath  
Contoured tinted plexiglass windscreen  
Stern rails  
Chrome-plated hardware  
Deep plush carpet  
Custom sport wheel  
Special tournament instrumentation includes dual speedometers, electric fuel gauge  
Built-in 27 gallon fuel system  
Bow eye and ski eyes  
Fastback transom with teak boarding steps, grab rails  
Running lights with removable stern light  
Positive foam flotation  
B.I.A. certified  
Dual cable steering  
Large ski locker  
Lockable glove box  
Twin position ski tow pylon  
Forward storage pocket  
Swin platform  
Special accent graphics  
Stainless steel mirror

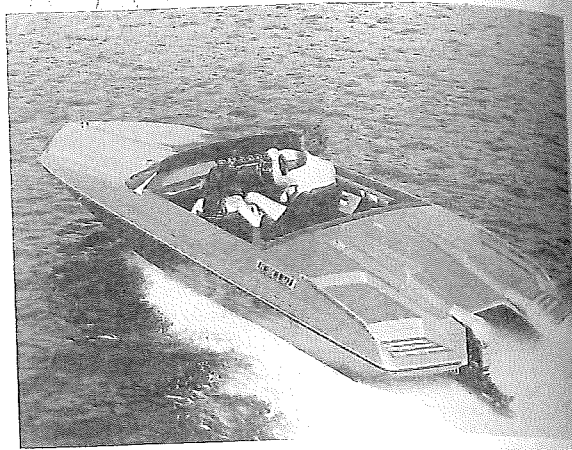
#### OPTIONS:

Custom mooring cover

#### PERFORMANCE:

Optimum performance range - 140-200 h.p.  
Normal speed range - 175 h.p.: 50-52 mph/80-83 kph

INTIMIDATOR *CUX20*



**\*INTIMIDATOR**

The ultimate in high-performance stern drives. Designed in unmistakable Carlson tradition, reflecting a proud and successful racing heritage. The Intimidator is a boat that waits to be challenged. Punch the throttle, listen for the powerful crescendo of wet exhaust stacks and take control of a machine with performance and efficiency. With 260 available horsepower, this competition-styled 20-foot vee bottom won't stand for following someone else's wake.

LIST PRICE		SALE PRICE
_____	Merc 260	_____
_____	Trailer	_____
_____	Accessories	_____
_____	Package Price	_____

\*Design Patent Pending

**SPECIFICATIONS:**

LOA	20' 3 1/2" - 6.2 m
Beam	87 1/2" - 2.2 m
Transom width	85" - 2.1 m
Depth	37-5/8" - 93.9 cm
Approximate weight	1400 lbs. - 636 kg
Maximum load	1050 lbs. - 476 kg
Glastron trailer	C-20
Colors	Red Metallic

**STANDARD FEATURES:**

- Hand-laid fiberglass construction
- Two deep foam-padded swivel bucket seats
- Padded stern bench with ski storage beneath
- Center console with lockable storage, built-in drink-holders, courtesy light
- Grab bar
- Deep plush marine carpet
- Custom sport wheel
- Power steering
- Custom instrumentation: speedometer, tachometer, engine temp. gauge, oil pressure gauge, electric fuel gauge, voltmeter, trim indicator gauge
- In-handle trim control
- Built-in 27-gallon fuel system
- Bow eye and ski eyes
- Fastback transom with teak boarding steps
- Custom dual polished aluminum wet exhaust stacks
- Running lights with removable stern light Bilge pump and blower
- Custom Intimidator accent graphics
- Stainless steel cleaver propeller
- Foam flotation
- B.I.A. certified

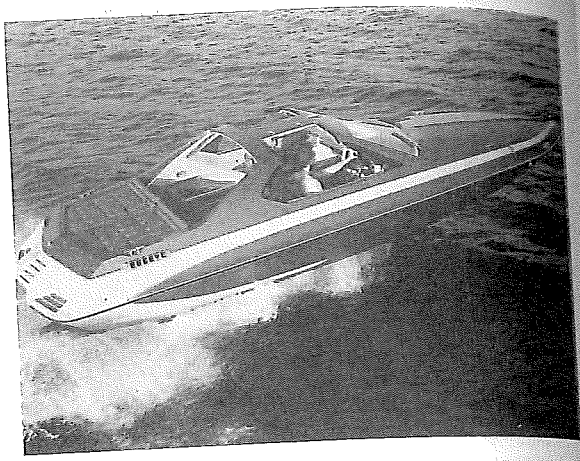
**OPTIONS:**

- Contour tinted plexiglass windscreen
- Custom mooring cover
- Exhaust silencers

**PERFORMANCE:**

Normal speed range - Merc 260: 62-66 mph/ 100-106 kph

SCIMITAR **CXT23**



**\*SCIMITAR**

The Scimitar - a special boat intended for special people. From the proud and bold bow to the sculptured swim step, there's 23 feet of beauty and grace, creating a glimpse of the future. Position yourself in the six-way power seat behind an innovatively designed console with digital electric clock and accessory switch controls, overhead. Open the sleekly-contoured roof panels, switch on the AM/FM stereo radio and tape player, and enjoy the uncompromised comfort of elegance.

But the full pleasure of the Scimitar cannot be experienced until the 260 h.p. stern-drive propulsion system is summoned into action. On plane, with hull and engine performing in perfect harmony, the future becomes now.

LIST PRICE		SALE PRICE
_____	Merc 260	_____
_____	Trailer	_____
_____	Accessories	_____

\*Design Patent Pending

**SPECIFICATIONS:**

- 23' 1/2" - 7.1 m
- 91-3/8" - 2.3 m
- 85 1/2" - 2.1 m
- 62 1/4" - 1.6 m
- 1850 lbs. - 839 kg
- 1500 lbs. - 687 kg
- C-23
- Amber Metallic and Buff
- Blue on Blue

**STANDARD FEATURES:**

- Hand-laid fiberglass construction
- Padded stern lounge with storage beneath
- Custom molded dash with command instrumentation - speedometer, tachometer, electric fuel gauge, oil pressure gauge, engine temp. gauge, voltmeter
- Storage tray built into dash
- Convenient drink holders
- Wrap-around tinted safety glass windshield
- Tinted acrylic roof sections for T-top T-top storage compartment
- Custom sport wheel
- Overhead accessory switch control with lights
- Digital electric clock overhead
- Electric windshield wiper
- Bucket seats forward with 6-way power seat for driver, port seat swivels
- Padded stern bench with storage beneath
- Ski locker in bow
- Deep plush marine carpet
- Teak step pads
- AM/FM stereo radio and cassette tape player
- Built-in 36 gallon fuel system
- International lighting
- Automatic bilge pump
- Sculptured swim steps built into stern
- In-handle trim control
- Bilge blower
- Cockpit courtesy lights
- B.I.A. certified
- Stainless steel propeller
- Power steering
- Bow eye and ski eyes
- Custom mooring cover
- Foam flotation

**OPTIONS:**

- Riveria enclosure canvas

**PERFORMANCE:**

Normal speed range - Merc 260: 53-57 mph/85-91 kph



\*CV - 23 1/0

A sleek glittering beauty with the quiet response of a stern-drive. There's plenty of power to push this vee bottom at speeds exceeding 50 mph. Stop and there's all the convenience a person could want. The Carlson 23 buddy sportboat is a personal performance boat that is like no other in the field.

LIST PRICE

SALE PRICE

_____	Merc 260	_____
_____	Trailer	_____
_____	Accessories	_____

Package Price \_\_\_\_\_

\*Design Patent Pending

SPECIFICATIONS:

LOA	23' 4 1/4" - 7.1 m
Beam	91 1/2" - 2.3 m
Transom width	85" - 2.2 m
Depth	50" - 1.3 m
Approximate weight	1400 lbs. - 636 kg
Maximum load	1200 lbs. - 545 kg
Glastron trailer	C-23
Colors	Metalflake Blue on Blue

STANDARD FEATURES:

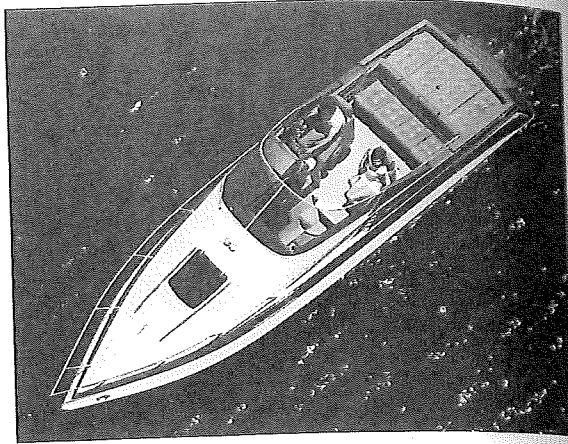
- Hand-laid fiberglass construction
- Padded stern sun lounge w/deep storage beneath
- Padded side storage trays
- Storage tray built into dash
- Smoked plexiglass windscreen
- Stainless steel bow and stern rails
- Deep plush marine carpet
- Custom instrumentation includes speedometer, tachometer, electric fuel gauge, oil pressure gauge, engine temp. gauge, voltmeter
- Built-in 50 gallon fuel system
- Spacious daycruiser cabin with white fur ceiling, teak trim, luxurious seating converts to total sleep areas, privacy curtain
- Inside latching tinted plexiglass hatch to bow
- Sculptured swim platform built into stern
- Running lights with removable stern light
- Two deep foam-padded swivel bucket seats
- Removable 48 qt. ice chest stores under stern sun lounge
- Padded stern bench with ski storage beneath
- Teak step pads
- Automatic bilge pump
- Cockpit courtesy light
- Power steering
- Foam flotation
- Custom sport wheel
- Bilge blower
- Bow eye and ski eyes
- Stainless steel prop
- B.I.A. certified

OPTIONS:

- Custom mooring cover

PERFORMANCE:

Normal speed range: Merc 260 - 52-55 mph/83-88 kph



CV - 27

Unique! Yes, this boat was designed to be like no other on the market. Twenty-seven feet of sleek, graceful styling with unmatched twin engine performance. A personal cruising Carlson, unique in styling and features. It's a cruiser! It's a performance boat! It's an expression of you and your desire for the best.

LIST PRICE		SALE PRICE
_____	Twin Merc 260	_____
_____	Trailer	_____
_____	Accessories	_____
Package Price w/ _____ H.P. \$ _____		

**SPECIFICATIONS:**

LOA	27' 3 1/2" - 8.3 m
Beam	94" - 2.4 m
Transom width	92" - 2.3 m
Depth	68 1/4" - 1.7 m
Approximate weight	2925 lbs. - 1326 kg
Maximum load	2000 lbs. - 907 kg
Glastron trailer	C-27
Colors	Amber Metallic and Buff

**STANDARD FEATURES:**

- Hand-laid fiberglass construction
- Padded stern bench with ski storage beneath
- Deep padded side storage trays
- Deep ski locker built-in under floor
- Wraparound tinted plexiglass abrasion-resistant windshield
- Power steering (where applicable)
- Custom instrumentation
- Luxurious cabin w/vee-berths forward, teak vanity built into bow, mirror, sliding doors, overhead cabin lights fore and aft, two 3-way reading lights
- Enclosed head w/Handi-head, sink, mirror, storage, cold water shower, window
- Tinted plexiglass hatch for ventilation and access to bow
- Two adjustable pedestal swivel bucket seats
- Padded stern sun lounge covers engine compartment
- Built-in 100 gallon fuel system
- Dinnette table converts from cabin to cockpit use
- Compact galley w/2- burner alcohol stove, cutting board, S/S sink, water system, ice box, storage
- Radio locker under console
- Storage cabinets
- Teak boarding pads
- Starboard windshield wiper
- S/S helm wheel
- S/S props
- S/S bow and ski eyes
- Lockable door to cabin
- Binnacle mounted compass
- Cockpit courtesy light
- S/S chrome-on bass hardware
- International lighting
- Rope and anchor locker
- Automatic bilge pump
- Teak taffrail
- Bilge blower
- Custom mooring cover
- B.I.A. certified

**OPTIONS:**

- 110 v dockside power with shore cable
- Full canvas top, side curtains and aft curtains
- 110-12 volt refrigerator
- Hydraulic boat levelers
- Electric stove

**PERFORMANCE:**

Normal speed range: Twin Merc 260 - 57-61 mph / 92-98 kph

## GLASTRON CUSTOM TRAILERS

Each Glastron Custom Aluminum Trailer is color coordinated to the boat model for which it is manufactured. The aluminum frame is finished in the predominate hull color, with striping and carpeting coordinated to deck color.

### MODEL GA-15 (Fits Glastron GX-15, SSV-151, HPV-155)

Capacity	1720 lbs.
Overall Length	16' 10"
Overall Width	72½"
Whitewall Tire Size	B-78-13
Brakes	Optional
Hitch Class	2
Trailer Weight	380 lbs.

### MODEL CA-16 (Fits Glastron/Carlson C-500, C-512)

Capacity	1720 lbs.
Overall Length	17' 8"
Overall Width	72½"
Whitewall Tire Size	B-78-13
Brakes	Optional
Hitch Class	2
Trailer Weight	380 lbs.

### MODEL GA-16 (Fits Glastron HPV-160, HPV-165, SSV-164, SSV-167, SSV-168)

Capacity	1720 lbs.
Overall Length	16' 10"
Overall Width	72½"
Whitewall Tire Size	B-78-13
Brakes	Optional
Hitch Class	2
Trailer Weight	380 lbs.

### MODEL H-17 (Fits Glastron HPV-175)

Capacity	2800 lbs.
Overall Length	19' 2"
Overall Width	94"
Whitewall Tire Size	H-78-14
Brakes	Optional
Hitch Class	2
Trailer Weight	550 lbs.

### MODEL GA-17 (Fits Glastron SSV-176, SSV-177)

Capacity	2100 lbs.
Overall Length	18' 6"
Overall Width	92"
Whitewall Tire Size	E-78-14
Brakes	Optional
Hitch Class	2
Trailer Weight	420 lbs.

### MODEL CA-17 (Fits Carlson C-537, C-535)

Capacity	2100 lbs.
Overall Length	18' 6"
Overall Width	92"
Whitewall Tire Size	E-78-14
Brakes	Optional
Hitch Class	2
Trailer Weight	420 lbs.

### MODEL GS-18 (Fits Glastron SX-180, SSV-184)

Capacity	2700 lbs.
Overall Length	20' 6"
Overall Width	94"
Whitewall Tire Size	H-78-14
Brakes	Optional
Hitch Class	2
Trailer Weight	550 lbs.



MODEL GS-19, SX-190, SSV-194, SSV-196, V-197

Capacity	2800 lbs.
Overall Length	20' 6"
Overall Width	94"
Whitewall Tire Size	H-78-14
Brakes	Optional
Hitch Class	2
Trailer Weight	560 lbs.

MODEL G-19  
(Fits Glastron V-192)

Capacity	2800 lbs.
Overall Length	20' 6"
Overall Width	94"
Whitewall Tire Size	H-78-14
Brakes	Optional
Hitch Class	2
Trailer Weight	560 lbs.

MODEL C-20  
(Fits Glastron/Carlson Intimidator, Ski Machine)

Capacity	2800 lbs.
Overall Length	21'
Overall Width	94"
Whitewall Tire Size	H-78-14
Brakes	Optional
Hitch Class	2
Trailer Weight	570 lbs.

MODEL C-23  
(Fits Glastron/Carlson CV-23 1/0, Scimitar)

Capacity	4000 lbs.
Overall Length	24' 2"
Overall Width	96"
Whitewall Tire Size	E-78-14
Brakes	Standard
Hitch Class	3
Trailer Weight	860 lbs.

MODEL G-21  
(Fits Glastron V-216, V-217)

Capacity	4000 lbs.
Overall Length	21' 7"
Overall Width	96"
Whitewall Tire Size	E-78-14
Brakes	Standard
Hitch Class	3
Trailer Weight	840 lbs.

MODEL G-24  
(Fits Glastron V-243)

Capacity	5000 lbs.
Overall Length	25' 9"
Overall Width	96"
Whitewall Tire Size	Standard
Hitch Class	3
Trailer Weight	890 lbs.

MODEL C-27  
(Fits Glastron/Carlson CV-270)

Capacity	6500 lbs.
Overall Length	27' 5"
Overall Width	96"
Whitewall Tire Size	E-78-14
Brakes	Standard
Hitch Class	3
Trailer Weight	1300 lbs.

Available options and accessories for Glastron Custom Aluminum Trailers include: Mag Wheels, Spare Tire and Bracket, Hydraulic Surge Brakes for Single Axle (standard on Dual Axle) and Touch-up Paint Kit.

## ENGINE & PERFORMANCE INFORMATION

The following pages contain data about sterndrives offered in our 1982 product. The approximate weight information on each boat is without engine, weighed dry, or without fuel, so adding the weight of the engine and 7 pounds per gallon will give you a very accurate total weight figure.

The following performance data has been compiled by Glastron's Engineering/Boat Test group, and is to be used as a guide in discussing specific model's overall performance. The data will vary depending on water conditions, altitude, wind, etc., and these variances should be noted prior to quoting performance data to the consumer. Glastron will provide additional engine data as it becomes available so that you can speak to speed, fuel consumption and other questions the customer might have regarding Glastron's performance.

80

MODEL:	Mercury 120
Horsepower	120
Cylinders	4
Cubic Inches	153
Compression Ratio	8.5:1
Max. Recommended RPM	3900 - 4300
Circuit Breaker	40 amp Thermal
Fuel	Regular (93 oct. research) (88 oct anti-knock Index)
Lower Unit Gear Ratio	1.98:1
Tilt	Power
Trim	Power
Length	30-27/32"
Width	21-5/8"
Height	20" (above crankshaft L) 28½" (overall)
Weight	600 lbs.
MODEL:	Mercury 140
Horsepower	140
Cylinders	4
Cubic Inches	181
Compression Ratio	8.5:1
Max. Recommended RPM	4200 - 4600
Circuit Breaker	40 amp Thermal
Fuel	Regular (93 oct. research) (88 oct. anti-knock Index)
Lower Unit Gear Ratio	1.98:1
Tilt	Power
Trim	Power
Length	30-27/32"
Width	21-3/16"
Height	20" (above crankshaft L) 28½" (overall)
Weight	625 lbs. (pkg. weight)
MODEL:	Mercury 228 w/Power
Horsepower	228 Steering
Cylinders	8
Cubic Inches	305
Compression Ratio	8.5:1
Max. Recommended RPM	4200 - 4600
Circuit Breaker	40 amp Thermal
Fuel	Regular (94 oct. research) (89 oct. anti-knock Index)
Lower Unit Gear Ratio	1.50:1
Tilt	Power
Trim	Power
Length	36-3/16"
Width	29"
Height	19-3/8" (above crankshaft L) 28-3/8" (overall)
Weight	975 lbs. (pkg weight)

81

**MODEL:** Mercruiser 470  
 Horsepower 170  
 Cylinders 4  
 Cubic Inches 224  
 Compression Ratio 8.8:1  
 Max. Recommended RPM 3800-4200  
 Circuit Breaker 40 amp thermal  
 Fuel Regular  
 Lower Unit Gear Ratio 1.84:1  
 Tilt Power  
 Trim Power  
 Length 36-3/8"  
 Height 20 1/4" (above crankshaft L)  
 28 3/4" (overall)  
 Width 23-5/8"  
 Weight 750 lbs. (pkg. weight)

**MODEL:** Mercruiser 485  
 Horsepower 185  
 Cylinders 4  
 Cubic Inches 224  
 Compression Ratio 8.8:1  
 Maximum Rec. RPM 3800 - 4200  
 Circuit Breaker 40 amp thermal  
 Fuel Regular  
 Lower Unit Gear Ratio 1.84:1  
 Tilt Power  
 Trim Power  
 Length 38.19"  
 Width 22.68"  
 Height 28.26"  
 Weight 727 lbs.

**MODEL:** Mercury 260 w/Power Steering  
 Horsepower 260  
 Cylinders 8  
 Cubic Inches 350  
 Compression Ratio 8.7:1  
 Max. Recommended RPM 4200 - 4600  
 Circuit Breaker 40 amp thermal  
 Fuel Regular (94 oct. research)  
 Lower Unit Gear Ratio 1.50:1  
 Tilt Power  
 Trim Power  
 Length 36-17/32"  
 Width 29"  
 Height 19-3/8" (above crankshaft L)  
 28-3/8" (overall)  
 Weight 1000 lbs. (pkg. weight)

**MODEL:** OMC 260 Selectrim w/  
 Horsepower 260 Power Steering  
 Cylinders 8  
 Cubic Inches 350  
 Compression Ratio 8.7:1  
 Max. Recommended RPM 4000 - 4400  
 Circuit breaker In-line fuse  
 Fuel Regular (94 oct. research)  
 Lower unit gear ratio 1.41:1  
 Tilt Power  
 Trim Power  
 Length 37 1/2"  
 Width 27 3/4"  
 Height 30-3/16" (overall)  
 20 3/4" (above crankshaft L)  
 Weight 950 lbs.

**MODEL:** OMC 120 Selectrim  
 Horsepower 120  
 Cylinders 4  
 Cubic Inches 153  
 Compression Ratio 8.5:1  
 Max. Recommended RPM 4000 - 4400  
 Circuit Breaker Fusible link  
 Fuel Regular  
 Lower Unit Gear Ratio 1.61:1  
 Tilt Power  
 Trim Power  
 Length 33-5/8"  
 Width 24"  
 Height 19 1/2" (above crankshaft L)  
 27" (overall)  
 Weight 650 lbs.

**MODEL:** OMC 140 Selectrim  
 Horsepower 140  
 Cylinders 4  
 Cubic Inches 181  
 Compression Ratio 8.5:1  
 Max. Recommended RPM 4000 - 4400  
 Circuit Breaker Fusible link  
 Fuel Regular (93 oct. research)  
 Lower Unit Gear Ratio 1.61:1  
 Tilt Power  
 Trim Power  
 Length 33-5/8"  
 Width 24"  
 Height 20-9/16" (above crankshaft L)  
 28-3/16" (overall)  
 Weight 675 lbs.

MODEL:	OMC V-6
Horsepower	170
Cylinders	6
Cubic Inches	229
Compression Ratio	8.5:1
Max. Recommended RPM	4200 - 4600
Circuit Breaker	Fusible Link
Fuel	Regular 89 oct. research)
Lower unit gear ratio	
Tilt	Power
Trim	Power
Length	31.81"
Height	27.68"
Weight	710 lbs.

## GLASTRON PERFORMANCE DATA

Performance data is based on tests conducted under normal weather & water conditions. Performance data will vary according to load, water condition, weather, altitude, and other considerations when in regular use.

### STERN DRIVES

#### SSV-164, SSV-168:

<u>120 h.p.</u> cruise	38-40 mph 25 mph	9 gal. per hour 3¼ gal. per hour
<u>140 h.p.</u> cruise	43-45 mph 25 mph	10½ gal. per hour 3½ gal. per hour

#### SSV-177:

<u>140 hp.</u> Full throttle cruise	40-42 mph 25 mph	9½ gals. per hour 4 gals. per hour
<u>470 h.p.</u> Full throttle cruise	45-47 mph 25 mph	13½ gals. per hour 4 gals. per hour

#### SX-180, SSV-184:

<u>470 h.p.</u> Full throttle cruise	44-46 mph 25 mph	13½ gals. per hour 4 gals. per hour
<u>485 h.p.</u> Full throttle cruise	45-47 mph 25 mph	13½ gals. per hour 4½ gals. per hour

SX-190, SSV-194, SSV-196:

<u>228 h.p.</u> Full throttle cruise	49-51 mph 25 mph	16 gals. per hour 4½ gals. per hour
<u>260 h.p.</u> Full throttle cruise	56-58 mph 25 mph	21½ gals. per hour 5 gals. per hour
<u>V-6</u> Full throttle cruise	44-46 mph 25 mph	14 gals. per hour 5½ gals. per hour
V-197		
<u>140 h.p.</u> Full throttle cruise	34-41 mph 25 mph	10 gals. per hour 4½ gals. per hour
<u>470 h.p.</u> Full throttle cruise	44-46 mph 25 mph	14½ gals. per hour 7½ gals. per hour
V-217		
<u>228 h.p.</u> Full throttle cruise	43-45 mph 25 mph	18 gals. per hour 6 gals. per hour
<u>260 h.p.</u> Full throttle cruise	46-48 h.p. 25 mph	21½ gals. per hour 6½ gals. per hour
<u>V-6</u> Full throttle cruise	37-39 25 mph	14 gals. per hour 5½ gals. per hour

PERFORMANCE DATA O/B'S

GX-150, SSV-151		
Maximum h.p. Full throttle cruise	90 45-47 mph 25 mph	9 gals. per hour 4 gals. per hour
SSV-167		
Maximum h.p. Full throttle cruise	115 44-46 mph 25 mph	11 gals. per hour 4 gals. per hour
SSV-176		
Maximum h.p. Full throttle cruise	140 47-49 mph 25 mph	12 gals. per hour 5 gals. per hour
V-192		
Maximum h.p. Full throttle cruise	175 50-52 mph 25 mph	18 gals. per hour 7 gals. per hour
HPV-155		
Maximum h.p. Full throttle cruise	90 44-46 mph 25 mph	9 gals. per hour 4 gals. per hour
HPV-160-165		
Maximum h.p. Full throttle cruise	115 47-49 mph 25 mph	13½ gals. per hour 5 gals. per hour
HPV-175		
Maximum h.p. Full throttle cruise	175 58-60 mph 25 mph	18 gals. per hour 6½ gals. per hour

V-216

Maximum h.p.	225	
Data based on	200 h.p.	
Full throttle	42-44 mph	20 gals. per hour
cruise	25 mph	8½ gals. per hour

V-243

Single engine	235	
Full throttle	40-42 mph	25 gals. per hour
cruise	25 mph	11 gals. per hour

Twin engine	140	
Full throttle	45-47 mph	23 gals. per hour
cruise	25 mph	10 gals. per hour

ADDITIONAL PERFORMANCE DATA WILL BE PROVIDED AS THE TEST INFORMATION BECOMES AVAILABLE.

Due to continuing improvements and changes in product features and options, Glastron does not guarantee the availability of all product features and options as displayed in this catalog, and reserves the right to change specifications and prices without notice.

THIS BOOK IS FOR GLASTRON SALESMEN'S REFERENCE ONLY AND IS NOT TO BE GIVEN OUT OR REPRODUCED.

GLASTRON BOAT COMPANY

A Conroy Company

P.O. Box 9447

Austin, Texas 78766-9447

1981 Glastron Boat Co.

Printed in U.S.A.